

Components for packaging machines and equipment

STANDARD MACHINE ELEMENTS WORLDWIDE



elesa®

ELESA, the worldwide leader in the design and manufacture of **standard machine elements** presents an extensive range of accessories and components in **engineering plastics** and metal designed for equipment and machinery destined for the **packaging, bottling and labelling industry** in the food and pharmaceutical sectors to set and regulate a wide variety of machine functions and for all manoeuvring, clamping and control operations even in sectors requiring the use of **corrosion resistant materials** in compliance with the most rigorous hygienic laws.



ELESA uses electricity produced only from 100% renewable sources, i.e. energy produced with natural resources (water, sunlight, wind, tides, geothermal heat, etc.) which therefore do not involve CO₂ emissions (which are instead produced by coal, oil and gas).

Over 80 years of leadership make ELESA the point of reference for designers and manufacturers. Over 80,000 product codes create an annual production of tens of millions of pieces, more than 300 patents worldwide, 56 international awards in Industrial Design, ISO 9001 certification, ISO 14001, ISO 45001, ISO 27001 and AEOF, are the numbers that sum up our business. 15 international subsidiaries and a close collaboration with the most qualified distributors worldwide ensure an efficient and timely service coupled with the guarantee of technical consultancy from the groups' Monza Headquarters.

Points of strength

- 300 PATENTS AND REGISTERED DESIGNS
- 58 INDUSTRIAL DESIGN AWARDS
- WORLDWIDE DISTRIBUTION
- FULL STOCK AVAILABILITY
- CUSTOMISED SOLUTIONS
- TECHNICAL COMPETENCE AT THE CUSTOMER'S SERVICE
- ISO 9001 - ISO 14001 - ISO 45001 - ISO 27001



FM 23747



EMS 518430



OHS 584384



IS 785854



Rotary controls

ELESA-CLAYTON rotary controls are used to set and regulate a wide variety of machine functions. High level of reliability and accuracy of the reading is made possible by great care during production and assembly of all components. Executions with technopolymer case thanks to the ultrasonic welding (case/window) guarantees the complete sealing with protection class up to IP 67.



DD51, DD52R, DD50,
DD51-E, DD52R-E / DD52R-E-RF

Digital or LCD digital reading

Position indicators with direct drive movement can be directly assembled on control spindles in any position. Bushing in black-oxide steel or stainless steel with Ø 10 mm (DD50), Ø 14 mm (DD51 - DD51-E) and Ø 20 mm (DD52R - DD52R-E).



Wireless spindle positioning system

The wireless system consists of a control unit UC-RF networked by radio frequency to up to 36 electronic position indicators DD52R-E-RF. The system is designed for an efficient manual spindle positioning. Current and target positions are transmitted by RF from and to the control unit, allowing a faster and more efficient machine set up. The system prevents the start of the machine until the set-up has been completed avoiding any loss of production due to incorrect machine set-up.



Hinges

A wide range of plastic and metal hinges in technopolymer, SUPER-technopolymer, aluminium, steel and stainless steel with different types of shapes, dimensions, assembly and rotation angle.



CFMY, CFA, CMM, CFT.

Hinges with safety switch

Among the many series of the range you can also find executions with built-in safety switch CFSQ or CFSW. with multiple safety switch and PMW. assembly plate on profiles with T-slot.





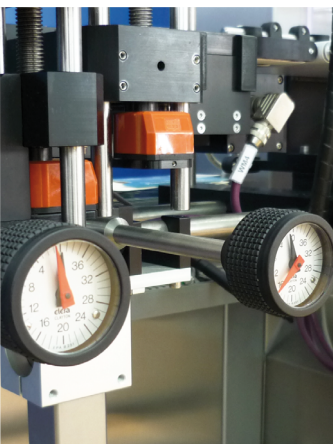
Application of DD52R direct drive digital position indicators and ME. balanced crank handles



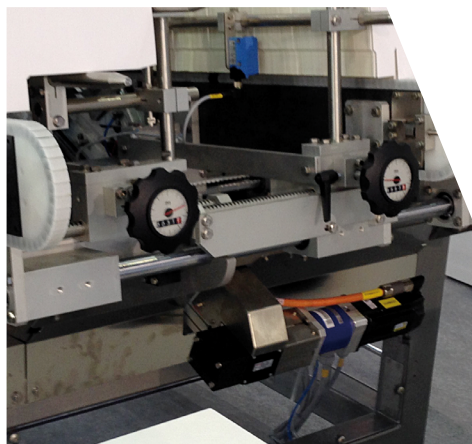
VRTP-XX,
VHT-XX, MBT-GW

Analogue or digital-analogue reading

Position indicators with gravity or positive drive movement, available in metal or technopolymer. They can be assembled to handwheels for coupling to the drive shaft.



Application of MBT-GA knobs with integral gravity position indicator.



Application of VHT lobe knobs for position indicators and GW12 digital-analogue gravity position indicators.



Application of CFSW. hinges with multiple safety switch.



Application of CFSQ hinges with built-in safety switch.

**! ABSOLUTAMENTE VIETATO
RIMUOVERE LE PROTEZIONI ED
I DISPOSITIVI DI SICUREZZA**

**REMOVAL OF GUARDS AND SAFETY
DEVICES IS ABSOLUTELY FORBIDDEN**

**! EST ABSOLUTELY INTERDIT
D'ENLEVER LES PROTECTIONS ET
LES DISPOSITIFS DE SECURITE**

**ES IST STRENG VERBOTEN SCHUTZ- UND
SICHERHEITVERRICHTUNGEN
ZU ENTFERNEN**

**QUEDA ABSOLUTAMENTE PROHIBIDO
REMOVER LAS PROTECCIONES Y TODOS
LOS DISPOSITIVOS DE SEGURIDAD**

Standard machine elements for manoeuvring, clamping and control operations

ELESA presents an extensive range of handwheels, clamping knobs, adjustable levers, bridge or tubular handles as well as guard safety and flush pull handles, control elements, levelling feet, castors and wheels available in technopolymer, aluminium or stainless steel with the greatest care to surface finishing.



6 ERGOSTYLE® colours



Ergonomy combined with a unique and unmistakable design for the best quality available on the market.

Corrosion resistance

ELESA suggests the stainless steel line for sectors subject to specific regulations requiring, also by law, corrosion resistant materials. Components fully made out of stainless steel or technopolymer with stainless steel inserts.

Entirely manufactured in technopolymer offering, in addition to corrosion resistance, lightness and flexibility of the material, good shock absorption characteristics, electrical insulation, and non-magnetic properties.

VDS+IRS

Solid handwheels with safety fold-away handles

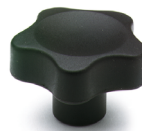
Technopolymer, black colour, light-grey boss cap also available in Ergostyle colours. Safety fold-away handle in technopolymer. Diameters 150 and 200 mm.



VC.692

Lobe knobs

Technopolymer, black colour, matte finish. The solid shape without cavities prevents unhealthy residues from depositing. Diameters from 25 to 60 mm.



ERX.

Adjustable handles

Technopolymer lever, grey-black colour. Push button in Ergostyle colours. The ergonomic shape ensures an effective and safe grip. Lever length from 30 to 108 mm.



ERGOSTYLE®



Application of VDS+IRS solid handwheels with safety fold-away handles



Application of VC.692 lobe knobs



Application of ERX adjustable handles

ESP.

Guard safety handles

Technopolymer, grey-black colour, matte finish. Caps in technopolymer in Ergostyle colours.

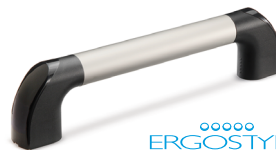


ERGOSTYLE®

ETH-AN

Tubular handles

Anodised aluminium tube; technopolymer handle shanks; side caps in Ergostyle colours. Tube length from 300 to 1000 mm.



ERGOSTYLE®

PC

Panel support clamp

Technopolymer, RAL 7042 grey colour. Pads in thermoplastic elastomer. In compliance with the Machine Directive (2006/42/CE).



ERGOSTYLE®



Application of ESP guard safety handles



Application of ETH-AN tubular handles



Application of PC panel support clamps

