



Self-aligning brackets

**elesa<sup>®</sup>**

## Square flanged self-aligning brackets



- **Base**  
Glass-fibre reinforced polyamide based (PA) technopolymer, black colour, matte finish.
- **Bushings and washers**  
AISI 304 stainless steel.
- **Bearing**  
High quality with traceability codes. Chrome steel.
- **Lubricator**  
Nickel-plated brass.
- **Packing rings**  
NBR rubber.
- **Cap**  
Glass-fibre reinforced polypropylene based (PP) technopolymer, RAL 7015 grey colour, matte finish.  
Closed cap for head bracket or for pass-through shafts.
- **Standard executions**
  - **UCF-T**: head bracket with closed cap.
  - **UCF-P**: bracket for pass-through shaft with cap and NBR rubber packing ring for rotating shafts.

### Features and applications

Overall dimensions are in compliance with ISO 3228.  
A system of completely sealed packing rings assures the protection of the bearing from dirt ingress.  
Max shaft misalignment = 2,5°.

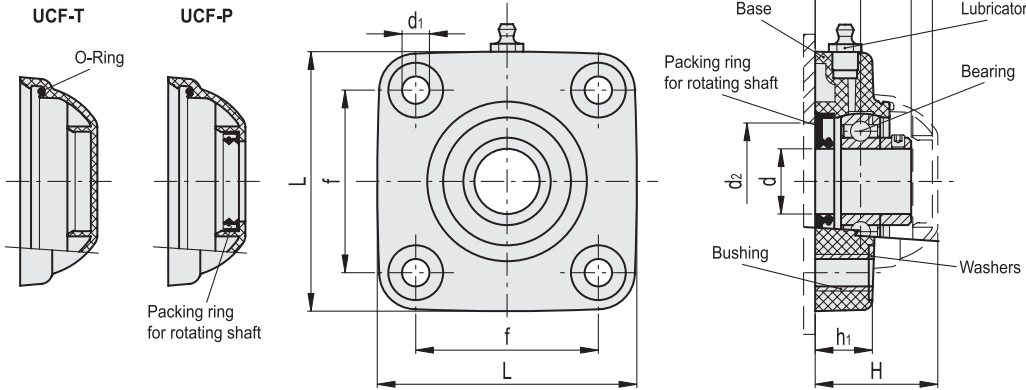
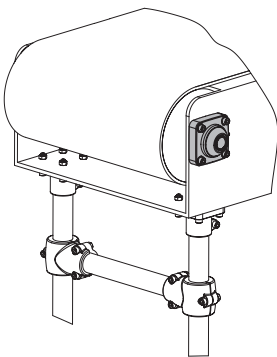
### Instructions of use

Assembly with shafts without end stops. For optimum operation, we recommend periodic lubrication with a common grease resistant to high temperatures and oxidation.

### Special executions on request

- AISI 440C stainless steel bearing.
- Bearing in inch sizes.
- Brackets for shafts with diameters in different sizes.
- Brackets in antibacterial material or in polypropylene based (PP) technopolymer, packing rings and oil seal type VITON®\*.

\* Registered trademark by DuPont Dow Elastomers.



Code	Description	d	d <sub>1</sub>	d <sub>2 min</sub>	d <sub>2 max</sub>	H	L	f	h <sub>1</sub>	h <sub>2</sub>	h <sub>3</sub>	h <sub>4</sub>	Bearing static load [N]	Bearing dynamic load [N]	Bracket load [N]	⚖
419551	UCF.205-A-25-T	25	10.5	45	50	49	99	70	22	36	47	17	7000	14000	17000	445
419561	UCF.206-A-30-T	30	10.5	50	60	56	113	83	26	41	54	20	11000	19000	17000	511
419531	UCF.205-A-25-P	25	10.5	45	50	49	99	70	22	36	-	17	7000	14000	17000	452
419541	UCF.206-A-30-P	30	10.5	50	60	56	113	83	26	41	-	20	11000	19000	17000	518

Oval flanged  
self-aligning brackets



- **Base**  
Glass-fibre reinforced polyamide based (PA) technopolymer, black colour, matte finish.
- **Bushings and washers**  
AISI 304 stainless steel.
- **Bearing**  
High quality with traceability codes. Chrome steel.
- **Lubricator**  
Nickel-plated brass.
- **Packing rings**  
NBR rubber.
- **Cap**  
Glass-fibre reinforced polypropylene based (PP) technopolymer, RAL 7015 grey colour, matte finish.  
Closed cap for head bracket or for pass-through shafts.
- **Standard executions**
  - **UCFL-T**: head bracket with closed cap.
  - **UCFL-P**: bracket for pass-through shaft with cap and NBR rubber packing ring for rotating shafts.

Features and applications

Overall dimensions are in compliance with ISO 3228.  
A system of completely sealed packing rings assures the protection of the bearing from dirt ingress.  
Max shaft misalignment = 2,5°.

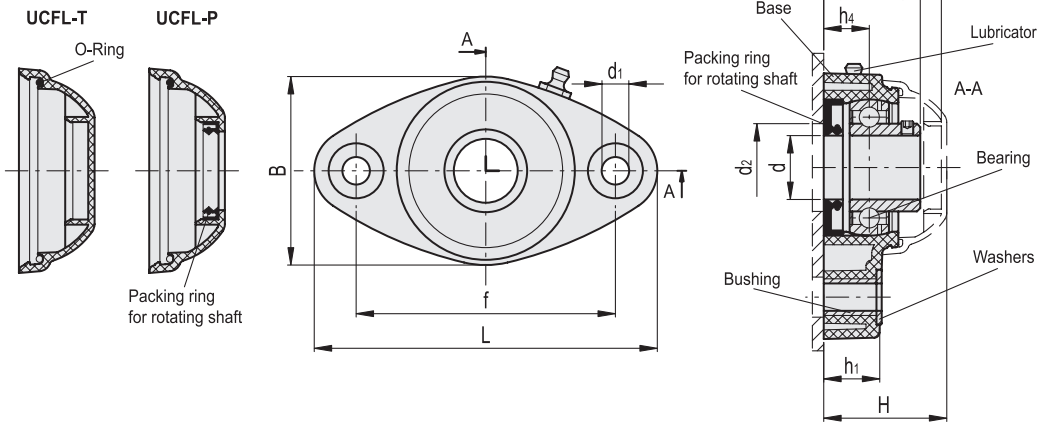
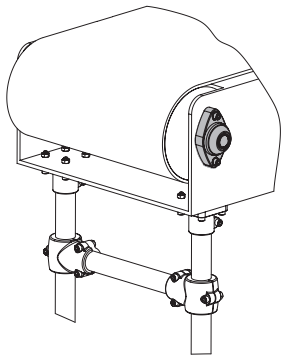
Instructions of use

Assembly with shafts without end stops. For optimum operation, we recommend periodic lubrication with a common grease resistant to high temperatures and oxidation.

Special executions on request

- AISI 440C stainless steel bearing.
- Bearing in inch sizes.
- Brackets for shafts with diameters in different sizes.
- Brackets in antibacterial material or in polypropylene based (PP) technopolymer, packing rings and oil seal type VITON®\*.

\* Registered trademark by DuPont Dow Elastomers.



Code	Description	d	d <sub>1</sub>	d <sub>2 min</sub>	d <sub>2 max</sub>	H	L	B	f	h <sub>1</sub>	h <sub>2</sub>	h <sub>3</sub>	h <sub>4</sub>	Bearing static load [N]	Bearing dynamic load [N]	Bracket load [N]	⚖
419552	UCFL.205-B-25-T	25	10.5	45	50	49	131	72	99	22	36	47	17	7000	14000	10000	294
419562	UCFL.206-B-30-T	30	10.5	50	60	56	149	86	117	26	41	54	20	11000	19000	13000	397
419532	UCFL.205-B-25-P	25	10.5	45	50	49	131	72	99	22	36	-	17	7000	14000	10000	300
419542	UCFL.206-B-30-P	30	10.5	50	60	56	149	86	117	26	41	-	20	11000	19000	13000	404

## Self-aligning brackets for shafts at 90°



- **Base**  
Glass-fibre reinforced polyamide based (PA) technopolymer, black colour, matte finish.
- **Bushings, washers and stop ring**  
AISI 304 stainless steel.
- **Bearing**  
High quality with traceability codes. Chrome steel.
- **Lubricator**  
Nickel-plated brass.
- **Packing rings**  
NBR rubber.
- **Cap**  
Glass-fibre reinforced polypropylene based (PP) technopolymer, RAL 7015 grey colour, matte finish.  
Closed cap for head bracket or for pass-through shafts.
- **Standard executions**
  - **UCP-T**: head bracket with closed cap.
  - **UCP-P**: bracket for pass-through shaft with cap and NBR rubber packing ring for rotating shafts.

### Features and applications

Overall dimensions are in compliance with ISO 3228.

A system of completely sealed packing rings assures the protection of the bearing from dirt ingress.

Max shaft misalignment = 2,5°.

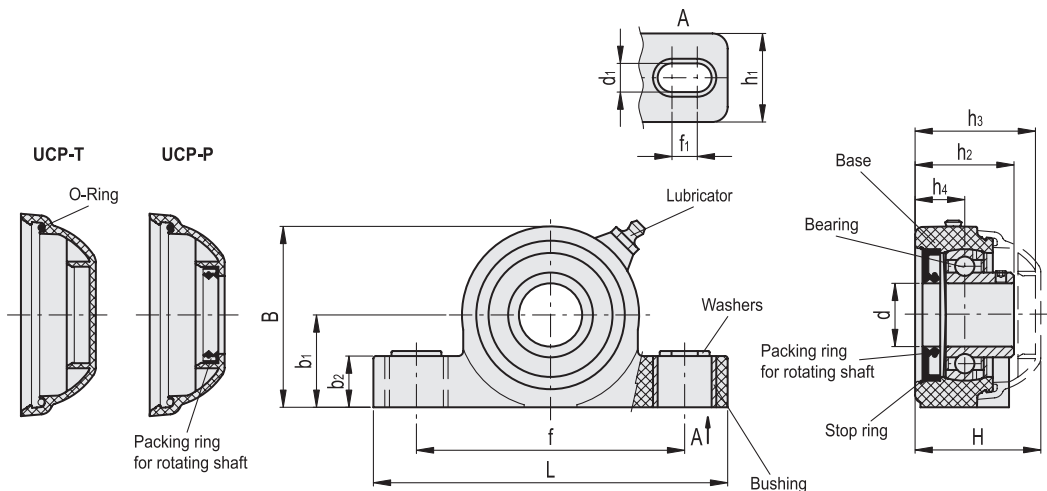
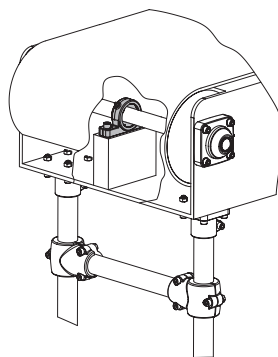
### Instructions of use

Assembly with shafts without end stops. For optimum operation, we recommend periodic lubrication with a common grease resistant to high temperatures and oxidation.

### Special executions on request

- AISI 440C stainless steel bearing.
- Bearing in inch sizes.
- Brackets for shafts with diameters in different sizes.
- Brackets in antibacterial material or in polypropylene based (PP) technopolymer, packing rings and oil seal type VITON®\*.

\* Registered trademark by DuPont Dow Elastomers.



Code	Description	d	d <sub>1</sub>	f <sub>1</sub>	H	L	B	f	b <sub>1</sub>	b <sub>2</sub>	h <sub>1</sub>	h <sub>2</sub>	h <sub>3</sub>	h <sub>4</sub>	Bearing static load [N]	Bearing dynamic load [N]	Bracket load [N]	⚖
419553	UCP.205-C-25-T	25	13	10	51.7	140	71.5	106	36.5	20	35	39	49	19.6	7000	14000	6000	333
419563	UCP.206-C-30-T	30	13	10	55.7	163	84.5	121	43	20	36	41.7	53	20.7	11000	19000	9000	456
419533	UCP.205-C-25-P	25	13	10	51.7	140	71.5	106	36.5	20	35	39	-	19.6	7000	14000	6000	339
419543	UCP.206-C-30-P	30	13	10	55.7	163	84.5	121	43	20	36	41.7	-	20.7	11000	19000	9000	463

Side flange  
self-aligning brackets



- **Base**  
Glass-fibre reinforced polyamide based (PA) technopolymer, black colour, matte finish.
- **Bushings and washers**  
AISI 304 stainless steel.
- **Bearing**  
High quality with traceability codes. Chrome steel.
- **Lubricator**  
Nickel-plated brass.
- **Packing rings**  
NBR rubber.
- **Cap**  
Glass-fibre reinforced polypropylene based (PP) technopolymer, RAL 7015 grey colour, matte finish.  
Closed cap for head bracket or for pass-through shafts.
- **Standard executions**
  - **UCFB-T**: head bracket with closed cap.
  - **UCFB-P**: bracket for pass-through shaft with cap and NBR rubber packing ring for rotating shafts.

Features and applications

Overall dimensions are in compliance with ISO 3228.  
A system of completely sealed packing rings assures the protection of the bearing from dirt ingress.  
Max shaft misalignment = 2,5°.

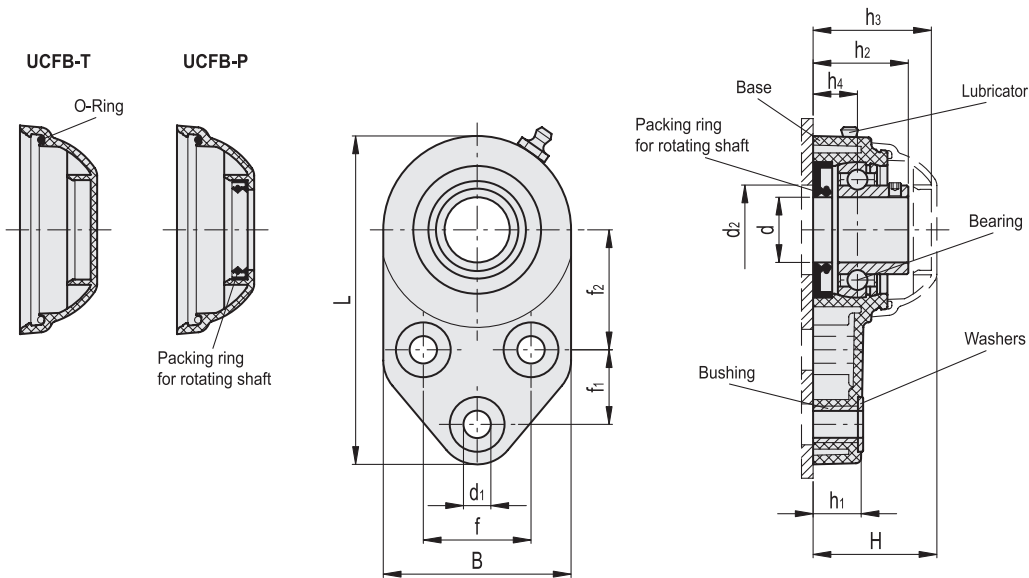
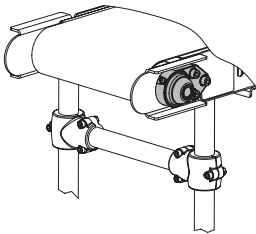
Instructions of use

Assembly with shafts without end stops. For optimum operation, we recommend periodic lubrication with a common grease resistant to high temperatures and oxidation.

Special executions on request

- AISI 440C stainless steel bearing.
- Bearing in inch sizes.
- Brackets for shafts with diameters in different sizes.
- Brackets in antibacterial material or in polypropylene based (PP) technopolymer, packing rings and oil seal type VITON®\*.

\* Registered trademark by DuPont Dow Elastomers.



Code	Description	d	d <sub>1</sub>	d <sub>2 min</sub>	d <sub>2 max</sub>	H	L	B	f	f <sub>1</sub>	f <sub>2</sub>	h <sub>1</sub>	h <sub>2</sub>	h <sub>3</sub>	h <sub>4</sub>	Bearing static load [N]	Bearing dynamic load [N]	Bracket load [N]	⚖
419554	UCFB.205-D-25-T	25	10.5	45	50	49.5	126	72	41.3	28.6	46	19	36.5	47	17	7000	14000	9000	353
419564	UCFB.206-D-30-T	30	10.5	50	60	55.7	142	85	47.6	32	52.4	26.3	41.7	53.2	20.7	11000	19000	11000	469
419534	UCFB.205-D-25-P	25	10.5	45	50	49.5	126	72	41.3	28.6	46	19	36.5	-	17	7000	14000	9000	359
419544	UCFB.206-D-30-P	30	10.5	50	60	55.7	142	85	47.6	32	52.4	26.3	41.7	-	20.7	11000	19000	11000	476

# Flexible Automation Components



**1 MSX**

## Connecting clamps

For the positioning of photocells or other devices on packaging lines by using tubes with round or square cross section.  
Stainless steel screws.

INOX  
Stainless Steel



**1 MSR**

## Connecting clamps

For the positioning of photocells or other devices on packaging lines by using aluminium slotted connecting tubes preventing free rotation.  
Black-oxide steel screws.



**2 BAS2 • BAS3**

## Bipod or tripod support bases

For supporting machines, conveyors, elevator belts in the beverage, food and pharmaceutical industry, automated transport.  
Zinc-plated steel or AISI 304 stainless steel screws.

INOX  
Stainless Steel



**2 BAG2-120 • BAS2-180**

## Bipod support bases and connection joint

For supporting the two lateral sides of conveyors, discharge belts and elevator belts in the beverage, food and pharmaceutical industry, automated transport.  
Zinc-plated steel or AISI 304 stainless steel screws.

INOX  
Stainless Steel



**3 TTA • TTB**

## Bearing heads

For supporting conveyors by means of steel tubes.  
Zinc-plated steel or AISI 304 stainless steel screws.

INOX  
Stainless Steel



**4 TSLA • TSLB**

## Side mounting top brackets

For use on conveyors, for supporting lateral sides by means of steel tubes.  
Zinc-plated steel or AISI 304 stainless steel screws.

INOX  
Stainless Steel



**5 GC.**

## Connecting joints

For connecting tubes with round or square cross section between the lateral sides of conveyors.  
Zinc-plated steel or AISI 304 stainless steel screws.

INOX  
Stainless Steel



**ND.Q • NDX.Q • NDX.T**

## Square and round end-caps

For use on round and square tubes for supporting machines, conveyors, elevator belts in the beverage, food and pharmaceutical industry, automated transport by using levelling elements.  
Brass tapped boss.

INOX  
Stainless Steel



**6**

**SPF • SPR • SPR.V**

## Guide rail brackets for linear and angular positioning

For fitting bearing pins, for supporting straight or curved side guides.  
Zinc-plated steel or AISI 304 stainless steel screws.

INOX  
Stainless Steel



**7**

**LV.A • LVQ.A • LV.F • LVQ.F**

## Levelling elements with or without ground mounting

For supporting machines, conveyors, elevator belts in the beverage, food and pharmaceutical industry, automated transport by using square or round end caps.  
Zinc-plated steel or AISI 304 stainless steel articulated stem.

INOX  
Stainless Steel



**8**

**MPG • MPG-2 • MPG-S**

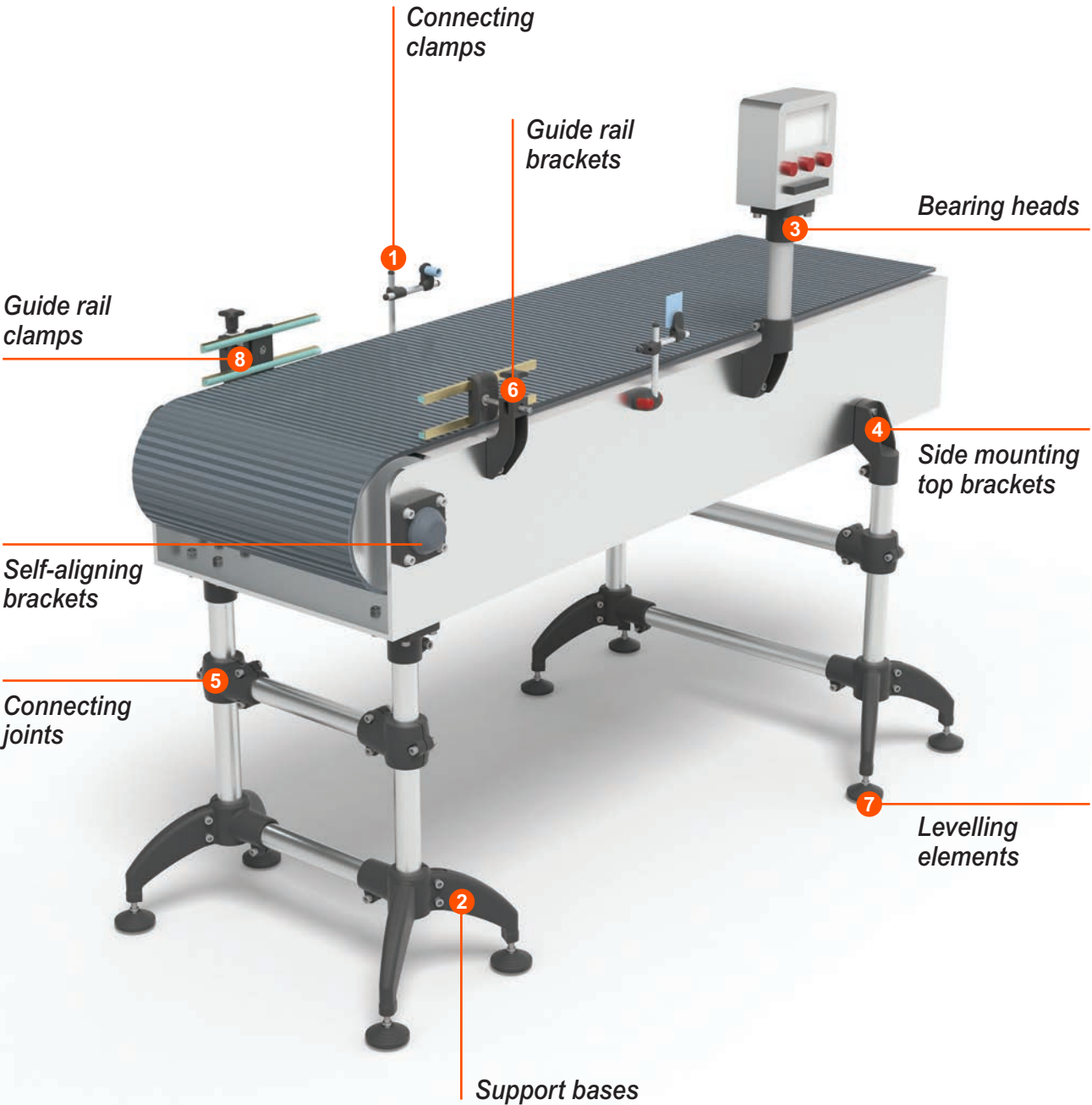
## Guide rail clamps

For use on conveyors for supporting side guides.  
Zinc-plated steel or AISI 304 stainless steel screws.

INOX  
Stainless Steel



# Flexible Automation Components





# elesa®

**ELESA (UK) LTD**

26 Moorlands Estate

Metheringham

Lincolnshire LN4 3HX

phone +44 (0) 1526 322670

fax +44 (0) 1526 322669

[www.elesa.co.uk](http://www.elesa.co.uk)

[sales@elesa.co.uk](mailto:sales@elesa.co.uk)

[www.elesa.com](http://www.elesa.com)

Printed in Italy  
ZDEPBRACKETENG16UK

