

## Conveyor components

**STANDARD MACHINE ELEMENTS WORLDWIDE**

**elesa®**

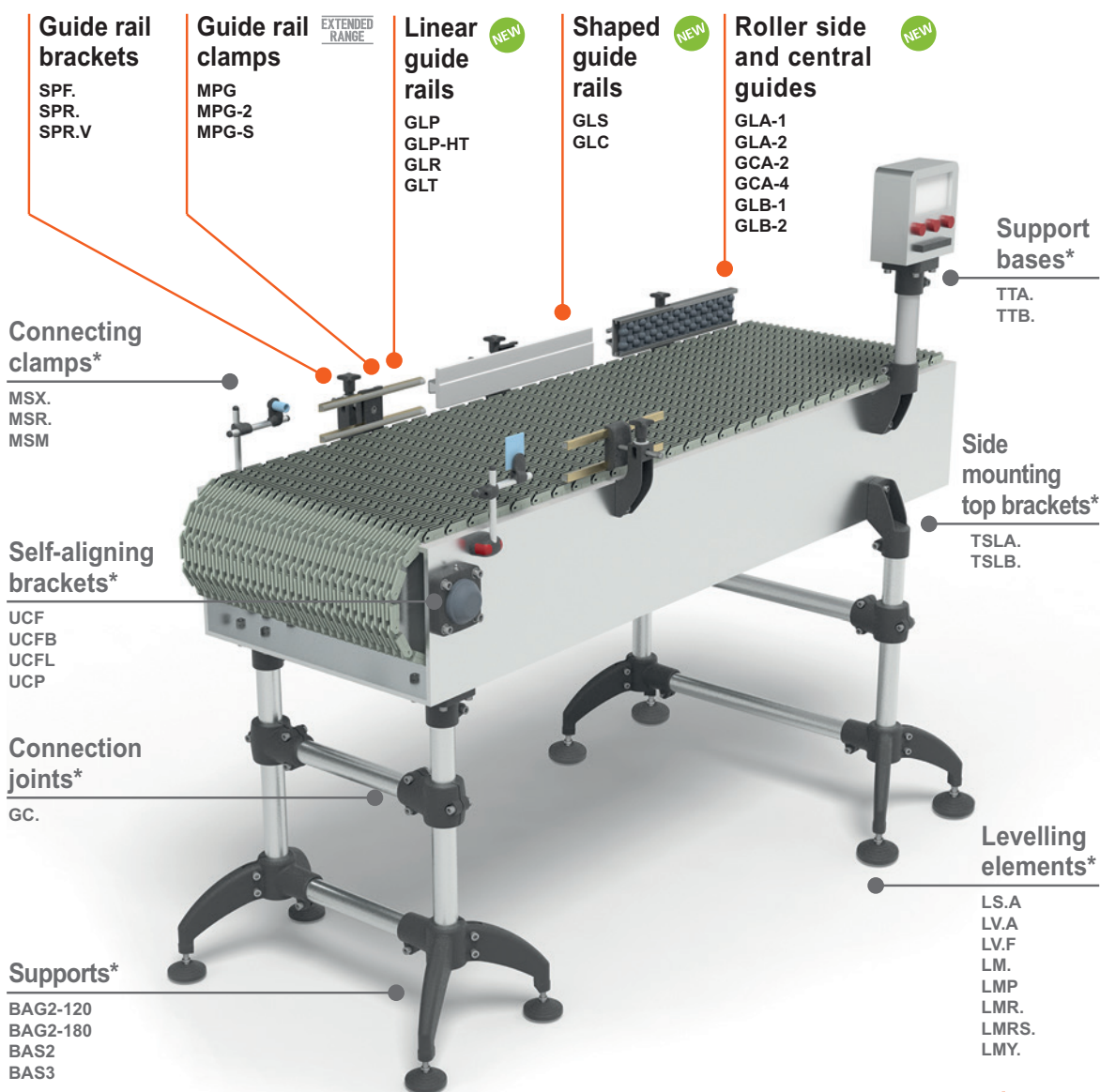
# Conveyor components

ELESA conveyor components allow the creation of support structures for production lines in diverse industrial sectors, such as bottling, packaging and material handling.

The vast ELESA range, already available on our website [elesa.com](http://elesa.com) and in Catalogue 166, is now enlarged with new linear guide rails, roller side guides, roller central guides and a series of accessories.

The side and central roller guides in polyethylene based (PE) technopolymer, are now available in many variants suitable for guiding products of different vertical dimensions. The range includes guides with spherical, cylindrical and round contact rollers for guiding products in cans, cardboard and glass respectively. Pins, screws and nuts in stainless steel guarantee a high resistance to corrosion.

The linear guide rails in polyethylene-based technopolymer (HMWPE) guarantee a high resistance to wear and, due to the low friction coefficient, they are particularly suitable for handling high speeds.



\*Browse the full range on [elesa.com](http://elesa.com)

## Conveyor components

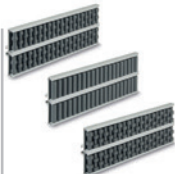


### GLA-1

Roller side guides  
Technopolymer,  
aluminium, stainless  
steel



pag. 4



### GLA-2

Roller side guides  
Technopolymer,  
aluminium, stainless  
steel



pag. 5

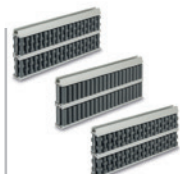


### GCA-2

Roller central guides  
Technopolymer,  
aluminium, stainless  
steel



pag. 7



### GCA-4

Roller central guides  
Technopolymer,  
aluminium, stainless  
steel



pag. 8



### TGL

Closing cap for GLA-1  
side guides  
Technopolymer



pag. 10



### BDG

Connecting bar for  
GLA and GCA guides  
Steel

pag. 11



### PGL-1

Separation block for  
GLA-1 side guides  
Technopolymer



pag. 12



### PGL-2

Separation block for  
GLA-2 side guides  
Technopolymer



pag. 13



### PGC-2

Separation block for  
GCA-2 central guides  
Technopolymer



pag. 14



### PGC-4

Separation block for  
GCA-4 central guides  
Technopolymer



pag. 15



### GLB-1

Articulated side  
guides  
Technopolymer,  
stainless steel



pag. 16



### GLB-2

Articulated side  
guides  
Technopolymer,  
stainless steel



pag. 18



### PRA-GLB

Profile for GLB side  
guides  
Stainless steel



pag. 20



### PRB-GLB

Profile for GLB side  
guides  
Stainless steel



pag. 21



### GLP GLP-HT

Linear guide rails  
Flat profile,  
technopolymer,  
stainless steel



pag. 22



### GLR

Linear guide rail  
Round profile R20,  
technopolymer,  
stainless steel



pag. 24



### GLS

Linear guide rail  
Shaped profile,  
technopolymer,  
stainless steel



pag. 25



### GLT

Linear guide rail  
Round profile R7,  
technopolymer,  
stainless steel



pag. 26



### GLC

Wide guide rails  
Shaped profile,  
technopolymer

pag. 27



### MPG-2 MPG-S MPG

Guide rail clamps  
Technopolymer and  
stainless steel



pag. 28



### SPF. SPR. SPR.V

Guide rail brackets  
for linear and  
angular positioning,  
technopolymer



pag. 33

**PROFILE**

Anodised aluminium, natural colour, matte finish.

**PINS SUPPORT**

Acetal resin based (POM) technopolymer, white colour.

**PINS**

AISI 304 stainless steel.

**ROLLERS**

Polyethylene based (PE) technopolymer, grey colour.

**STANDARD EXECUTIONS**

- **GLA-1-RS**: with shaped rollers, spherical contact.
- **GLA-1-RC**: with cylindrical rollers.
- **GLA-1-RT**: with shaped rollers, cylindrical contact.

**FEATURES AND APPLICATIONS**

GLA-1 side guides are self-supporting structures for the side guide of products with limited vertical dimensions on conveyor belts (Fig.1). Depending on the product to transport, it is recommended to use:

- GLA-1-RS: for the guide of products in cans or in plastic containers;
- GLA-1-RC: for the guide of cardboard products, for a greater fluency;
- GLA-1-RT: for the guide of glass products, in case of accidental breakage they facilitate the expulsion of debris.

Supplied assembled in bars of 3 metres length.

**SPECIAL EXECUTIONS ON REQUEST**

- Side guides with rollers in different colours.
- Side guides with pins in acetal resin based (POM) technopolymer.

**ACCESSORIES ON REQUEST**

- BDG: zinc-plated steel connecting bar for guides.
- TGL: closing cap for guides.
- PGL-1: separation block for side guide.
- MPG-P: assembly pin.
- MPG-V: hammer head screw.

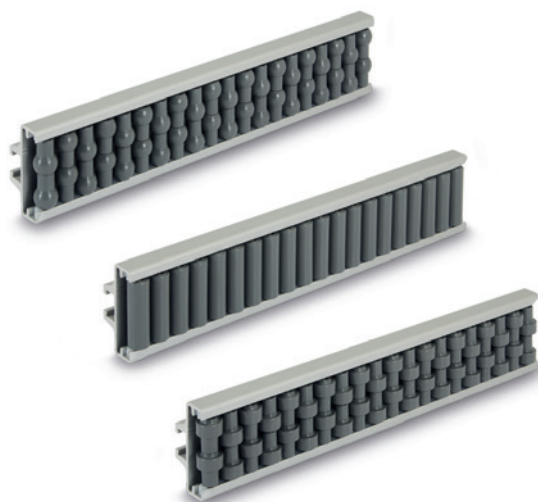
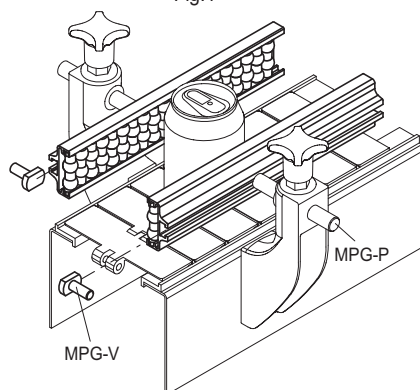
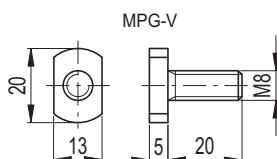
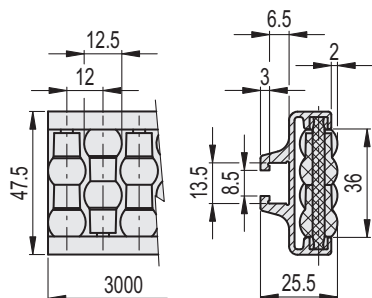
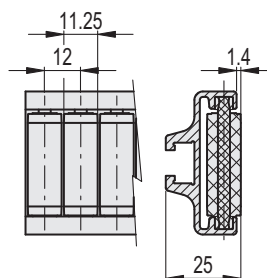
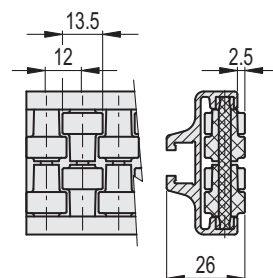


Fig.1

**MPG-V**

Code	Description	△
419693	MPG-V-p-M8x20	15

**GLA-1-RS****GLA-1-RC****GLA-1-RT****GLA-1-RS**

Code	Description	△
419101	GLA-1-RS-48-3000	3400

**GLA-1-RC**

Code	Description	△
419102	GLA-1-RC-48-3000	3400

**GLA-1-RT**

Code	Description	△
419103	GLA-1-RT-48-3000	3400

**PROFILE**

Anodised aluminium, natural colour, matte finish.

**PINS SUPPORT**

Acetal resin based (POM) technopolymer, white colour.

**PINS**

AISI 304 stainless steel.

**ROLLERS**

Polyethylene based (PE) technopolymer, grey colour.

**STANDARD EXECUTIONS**

- **GLA-2-RS**: with shaped rollers, spherical contact.
- **GLA-2-RC**: with cylindrical rollers.
- **GLA-2-RT**: with shaped rollers, cylindrical contact.

**FEATURES AND APPLICATIONS**

GLA-2 side guides are self-supporting structures for the side guide of products with important vertical dimensions on conveyor belts (Fig.1). Depending on the product to transport, it is recommended to use:

- GLA-2-RS: for the guide of products in cans or in plastic containers;
- GLA-2-RC: for the guide of cardboard products, for a greater fluency;
- GLA-2-RT: for the guide of glass products, in case of accidental breakage they facilitate the expulsion of debris.

Supplied assembled in bars of 3 metres length.

**SPECIAL EXECUTIONS ON REQUEST**

- Side guides with rollers in different colours.
- Side guides with pins in acetal resin based (POM) technopolymer.

**ACCESSORIES ON REQUEST**

- BDG: zinc-plated steel connecting bar for guides.
- PGL-2: separation block for side guide.
- MPG-P: assembly pin.
- MPG-V: hammer head screw (see GLA-1).

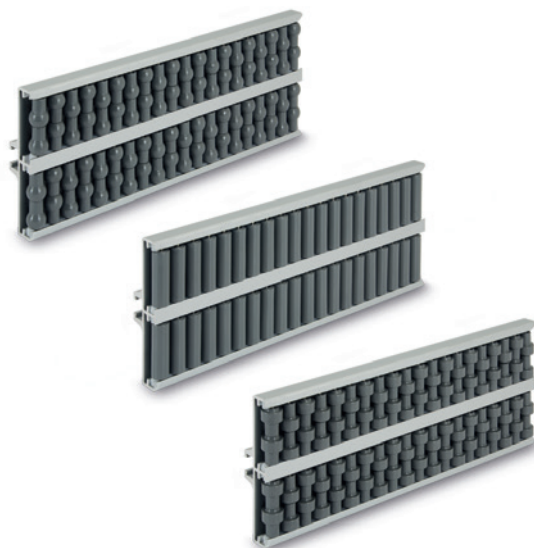
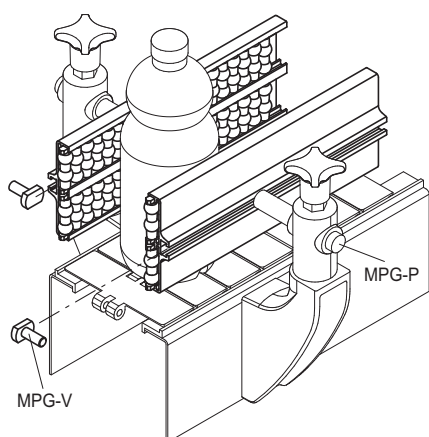
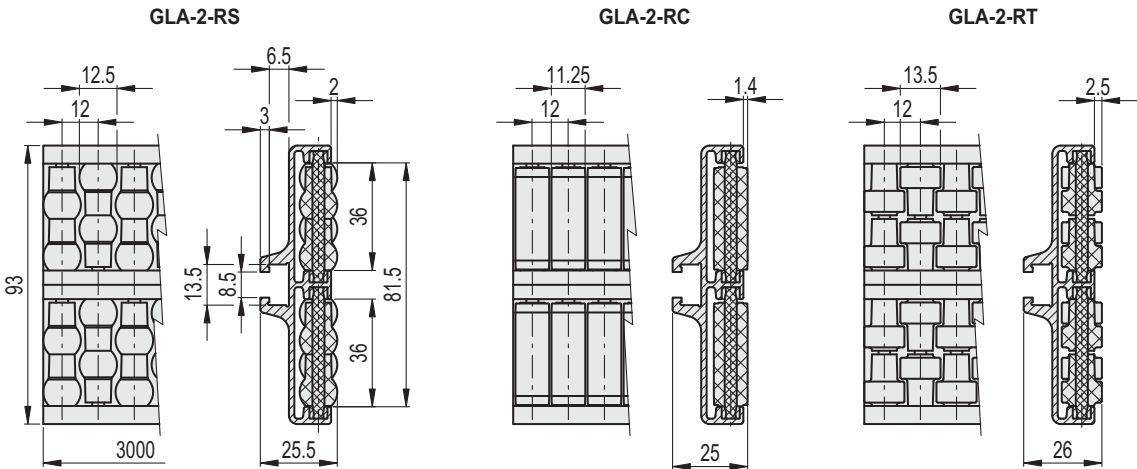


Fig.1





GLA-2-RS

Code	Description	⚖
419111	GLA-2-RS-93-3000	6600

GLA-2-RC

Code	Description	⚖
419112	GLA-2-RC-93-3000	6600

GLA-2-RT

Code	Description	⚖
419113	GLA-2-RT-93-3000	6600

INOX STAINLESS STEEL



**PROFILE**

Anodised aluminium, natural colour, matte finish.

**PINS SUPPORT**

Acetal resin based (POM) technopolymer, white colour.

**PINS**

AlSi 304 stainless steel.

**ROLLERS**

Polyethylene based (PE) technopolymer, grey colour.

**STANDARD EXECUTIONS**

- **GCA-2-RS**: with shaped rollers, spherical contact.
- **GCA-2-RC**: with cylindrical rollers.
- **GCA-2-RT**: with shaped rollers, cylindrical contact.

**FEATURES AND APPLICATIONS**

GCA-2 central guides are self-supporting structures for the side guide of products with limited vertical dimensions on conveyor belts (Fig.1). Depending on the product to transport, it is recommended to use:

- GCA-2-RS: for the guide of products in cans or in plastic containers;
- GCA-2-RC: for the guide of cardboard products, for a greater fluency;
- GCA-2-RT: for the guide of glass products, in case of accidental breakage they facilitate the expulsion of debris.

Supplied assembled in bars of 3 metres length.

**SPECIAL EXECUTIONS ON REQUEST**

- Central guides with rollers in different colours.
- Central guides with pins in acetal resin based (POM) technopolymer.

**ACCESSORIES ON REQUEST**

- BDG: zinc-plated steel connecting bar for guides.
- PGC-2: separation block for central guide.
- MPG-P: assembly pin.
- MPG-V: hammer head screw (see GLA-1).

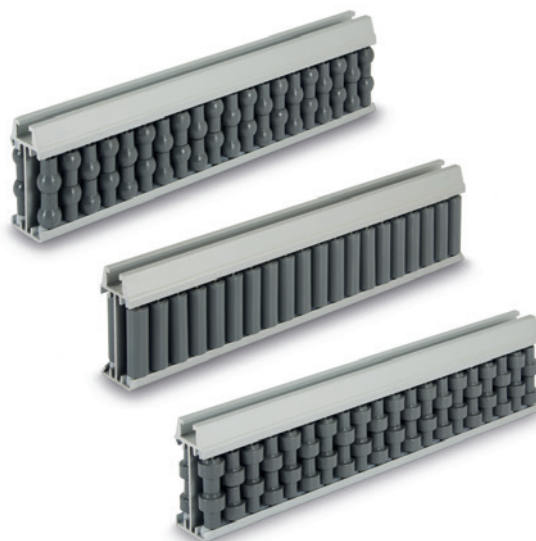
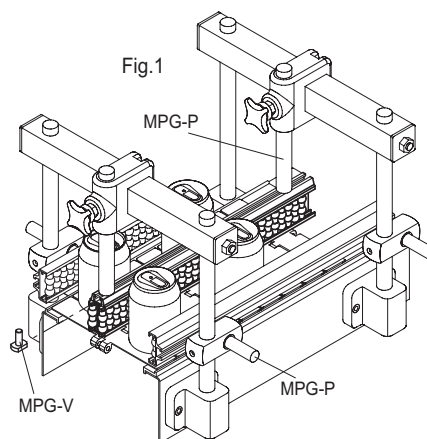
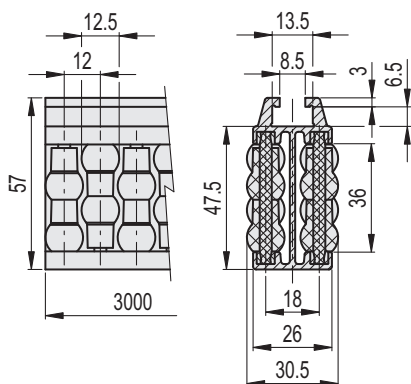
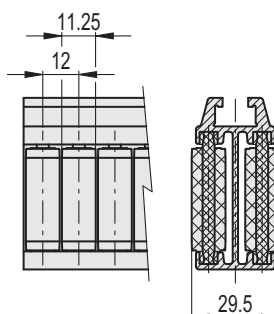
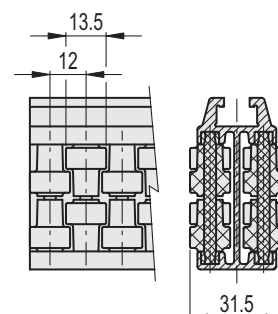


Fig.1

**GCA-2-RS****GCA-2-RC****GCA-2-RT****GCA-2-RS**

Code	Description	⚖
419121	GCA-2-RS-57-3000	6600

**GCA-2-RC**

Code	Description	⚖
419122	GCA-2-RC-57-3000	6600

**GCA-2-RT**

Code	Description	⚖
419123	GCA-2-RT-57-3000	6600

**PROFILE**

Anodised aluminium, natural colour, matte finish.

**PINS SUPPORT**

Acetal resin based (POM) technopolymer, white colour.

**PINS**

AISI 304 stainless steel.

**ROLLERS**

Polyethylene based (PE) technopolymer, grey colour.

**STANDARD EXECUTIONS**

- **GCA-4-RS**: with shaped rollers, spherical contact.
- **GCA-4-RC**: with cylindrical rollers.
- **GCA-4-RT**: with shaped rollers, cylindrical contact.

**FEATURES AND APPLICATIONS**

GCA-4 central guides are self-supporting structures for the side guide of products with important vertical dimensions on conveyor belts (Fig.1).

Depending on the product to transport, it is recommended to use:

- GCA-4-RS: for the guide of products in cans or in plastic containers;
- GCA-4-RC: for the guide of cardboard products, for a greater fluency;
- GCA-4-RT: for the guide of glass products, in case of accidental breakage they facilitate the expulsion of debris.

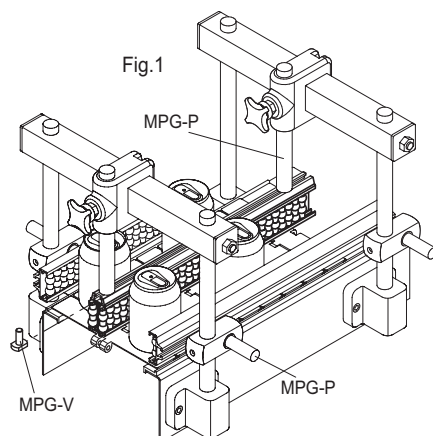
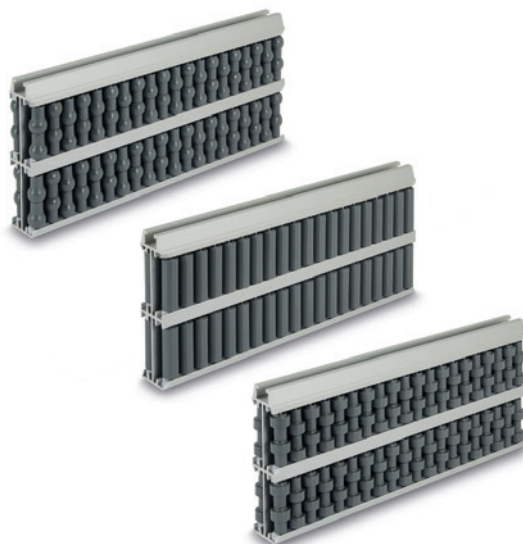
Supplied assembled in bars of 3 metres length.

**SPECIAL EXECUTIONS ON REQUEST**

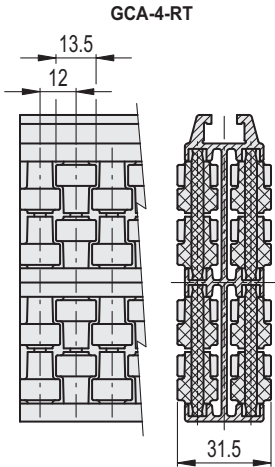
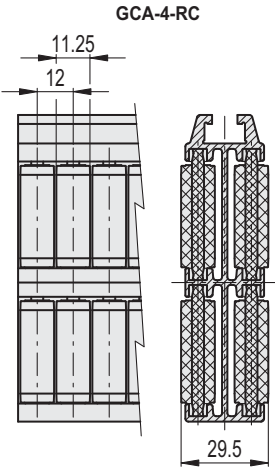
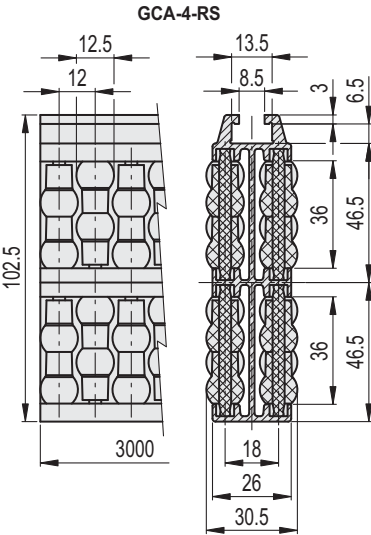
- Central guides with rollers in different colours.
- Central guides with pins in acetal resin based (POM) technopolymer.

**ACCESSORIES ON REQUEST**

- BDG: zinc-plated steel connecting bar for guides.
- PGC-4: separation block for central guide.
- MPG-P: assembly pin.
- MPG-V: hammer head screw (see GLA-1).







GCA-4-RS		
Code	Description	⚖️
419131	GCA-4-RS-103-3000	13040

GCA-4-RC		
Code	Description	⚖️
419132	GCA-4-RC-103-3000	13040

GCA-4-RT		
Code	Description	⚖️
419133	GCA-4-RT-103-3000	13040

**INOX** STAINLESS STEEL

# **MATERIAL**

Polyamide-based (PA) technopolymer, grey colour.

# **SCREW AND NUT**

AISI 304 stainless steel

# **FEATURES AND APPLICATIONS**

TGL closing cap is used at the ends of GLA-1 side guides (Fig.1).

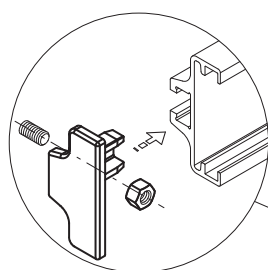
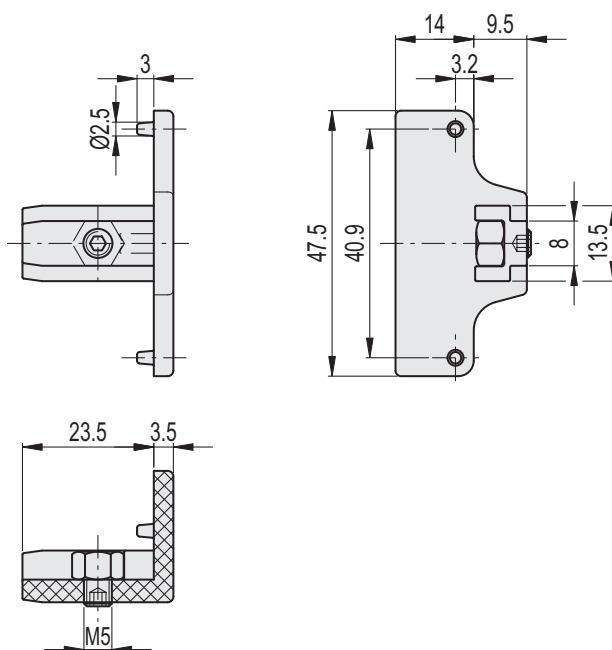
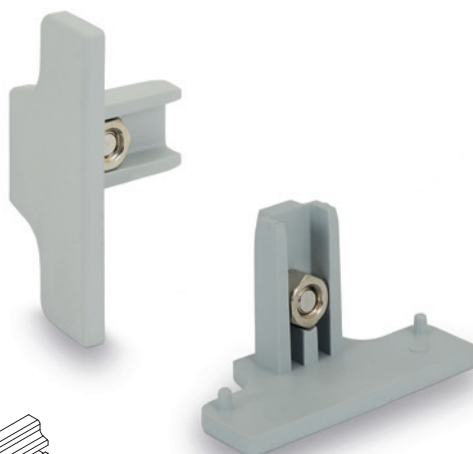
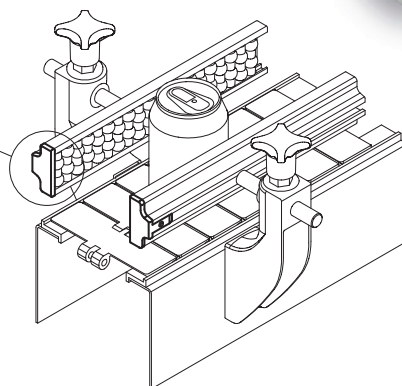


Fig.1



INOX STAINLESS STEEL

Code	Description	△
419143	TGL-24-48	10

MATERIAL

Zinc-plated steel.

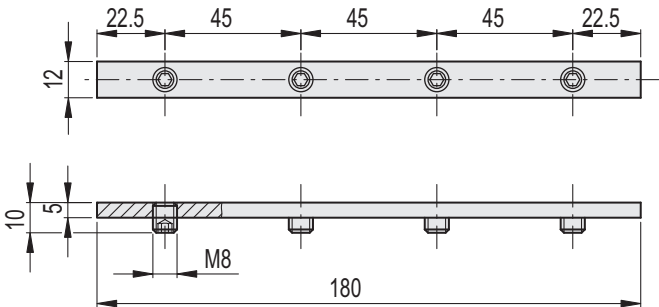
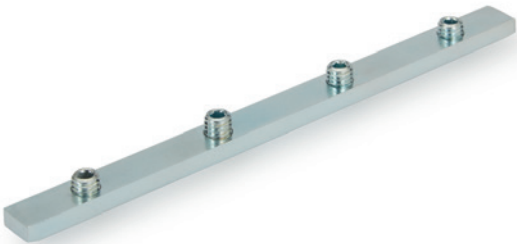
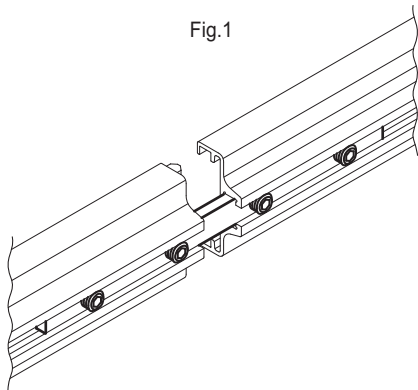
SCREWS

Zinc-plated steel.

FEATURES AND APPLICATIONS

BDG connecting bar is used for connecting the profiles (Fig.1) of the different side guides (GLA) or central guides (GCA). It is supplied with 4 assembly grub screws M8x10 with hexagon socket.

Fig.1



Code	Description	⚖
419141	BDG-12-180	80

**MATERIAL**

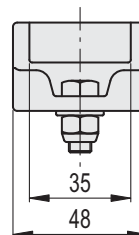
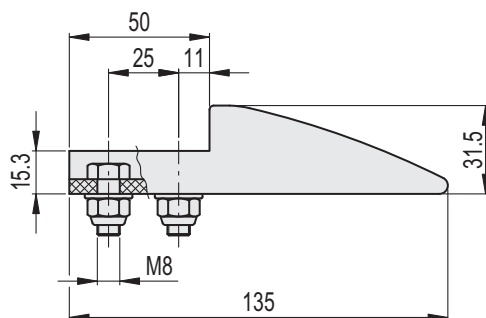
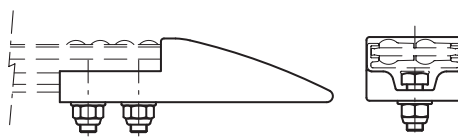
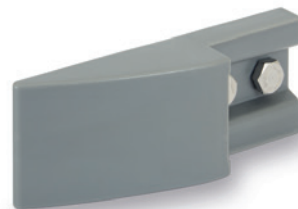
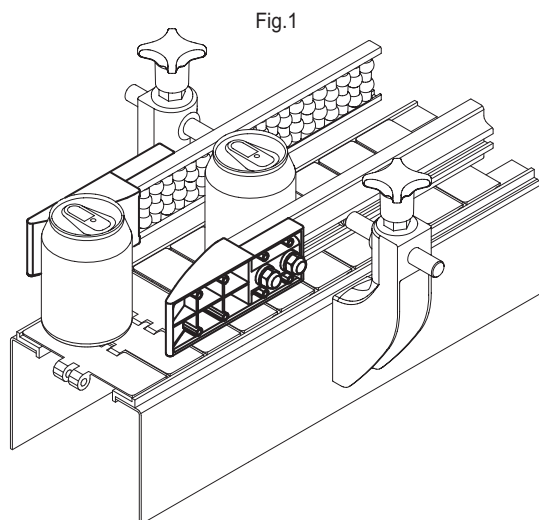
Polyethylene based (PE) technopolymer, grey colour.

**SCREWS AND NUTS WITH THREAD LOCK**

AISI 304 stainless steel

**FEATURES AND APPLICATIONS**

PGL-1 separation block is used at the ends of GLA-1 side guides (Fig.1).



INOX STAINLESS STEEL

Code	Description	⚖
419145	PGL-1-48-135	80

MATERIAL

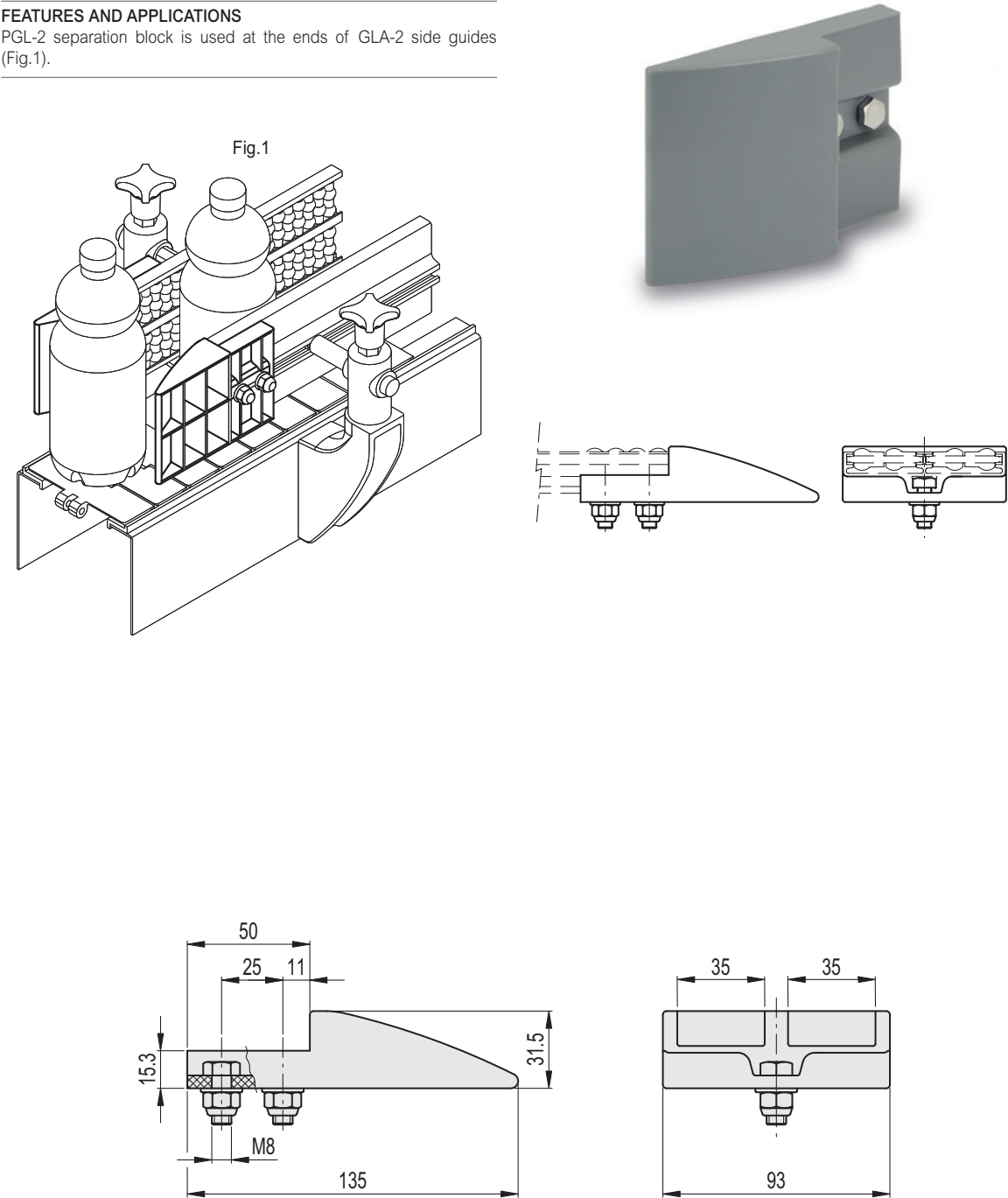
Polyethylene based (PE) technopolymer, grey colour.

SCREWS AND NUTS WITH THREAD LOCK

AISI 304 stainless steel

FEATURES AND APPLICATIONS

PGL-2 separation block is used at the ends of GLA-2 side guides (Fig.1).



Code	Description	⚖
419149	PGL-2-93-135	120

**MATERIAL**

Polyethylene based (PE) technopolymer, grey colour.

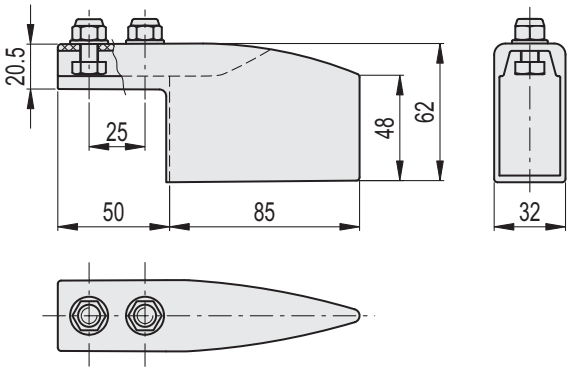
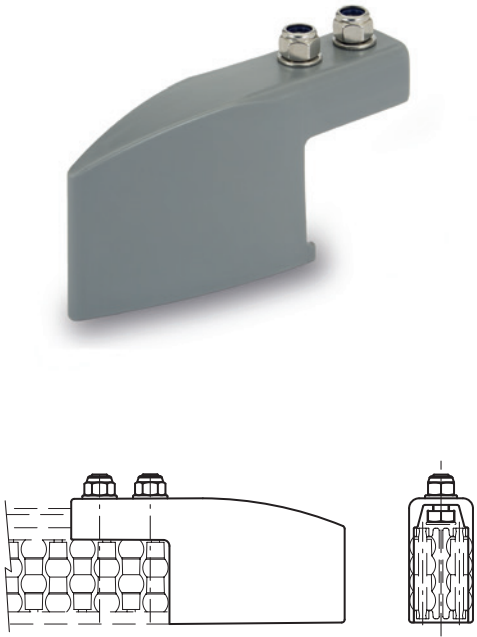
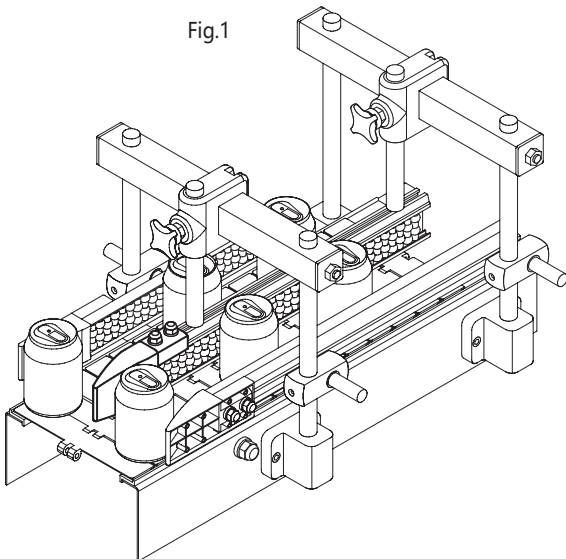
**SCREWS AND NUTS WITH THREAD LOCK**

AISI 304 stainless steel

**FEATURES AND APPLICATIONS**

PGC-2 separation block is used at the ends of GCA-2 central guides (Fig.1).

Fig.1



Code	Description	⚖
419147	PGC-2-62-135	90



MATERIAL

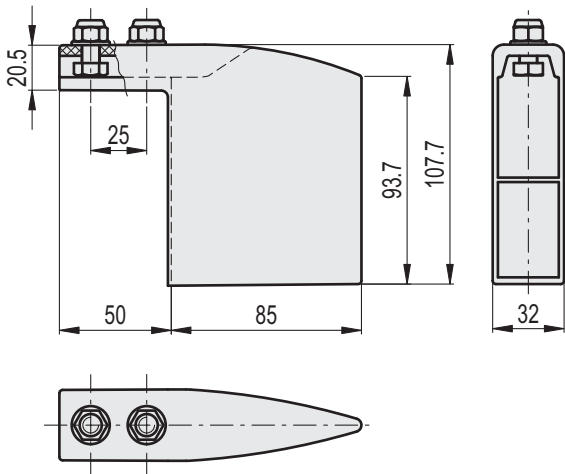
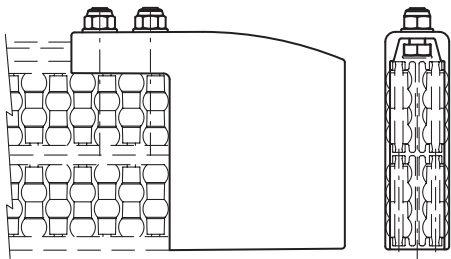
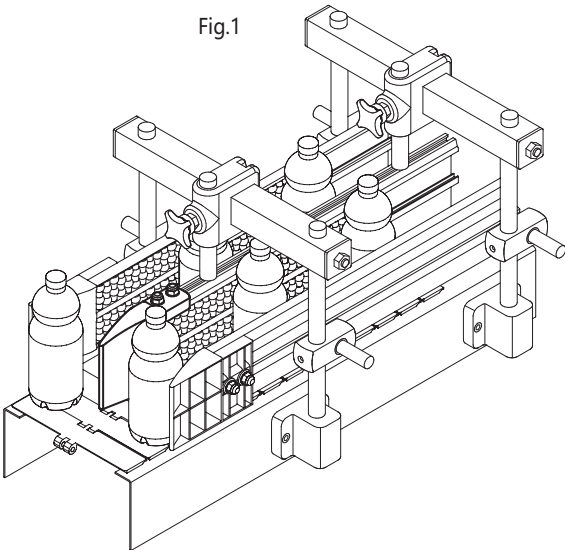
Polyethylene based (PE) technopolymer, grey colour.

SCREWS AND NUTS WITH THREAD LOCK

AISI 304 stainless steel

FEATURES AND APPLICATIONS

PGC-4 separation block is used at the ends of GCA-4 central guides (Fig.1).



Code	Description	⚖
419151	PGC-4-108-135	130

## SELF-SUPPORTING STRUCTURE

Acetal resin based (POM) technopolymer, black colour.

## PINS

AISI 304 stainless steel.

## ROLLERS

Polyethylene based (PE) technopolymer, grey colour.

## STANDARD EXECUTIONS

- **GLB-1-RS**: with shaped rollers, spherical contact.
- **GLB-1-RC**: with cylindrical rollers.
- **GLB-1-RT**: with shaped rollers, cylindrical contact.

## FEATURES AND APPLICATIONS

GLB-1 side guides are modular self-supporting structures for the side guide of products with limited vertical dimensions on conveyor belts (Fig.1).

Particularly suitable for use in wet environments.

Depending on the product to transport, it is recommended to use:

- GLB-1-RS: for the guide of products in cans or in plastic containers;
- GLB-1-RC: for the guide of cardboard products, for a greater fluency;
- GLB-1-RT: for the guide of glass products, in case of accidental breakage they facilitate the expulsion of debris.

The joint in the roller side guides allows an external curvature radius 500 mm, internal curvature radius 350 mm.

Supplied already assembled in modules of 375 mm length, for profiles 40x8 mm.

## SPECIAL EXECUTIONS ON REQUEST

- Side guides with self-supporting structure and rollers in different colours.
- Side guides with pins in acetal resin based (POM) technopolymer.

## ACCESSORIES ON REQUEST

- PRA-GLB: AISI 304 stainless steel profile for side guides.
- PRB-GLB: AISI 304 stainless steel profile for side guides.

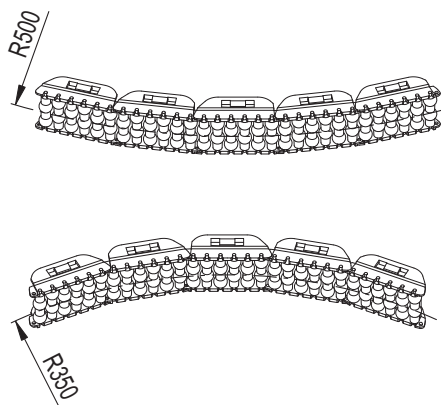
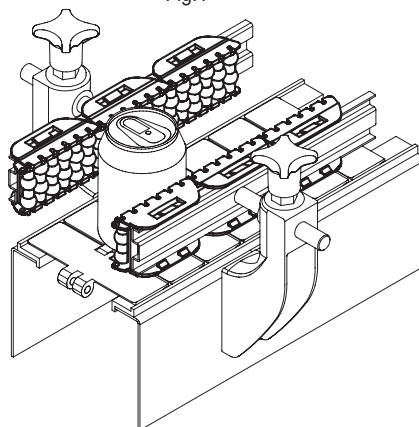
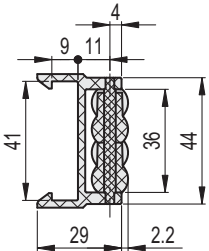
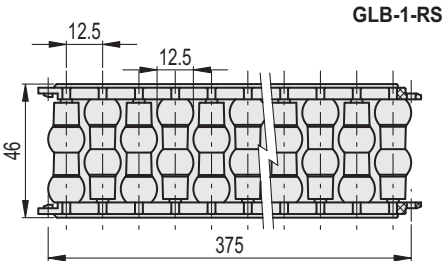


Fig.1

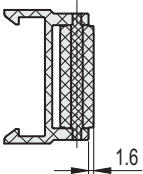
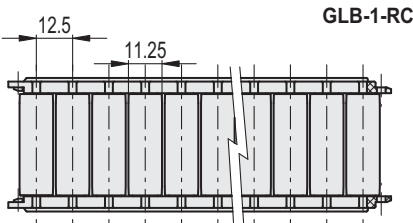




GLB-1-RS

INOX STAINLESS STEEL

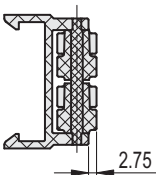
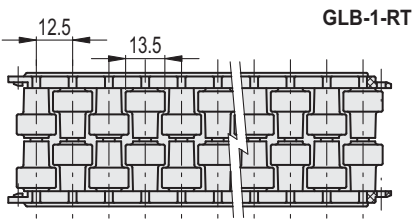
Code	Description	⚖
419161	GLB-1-RS-46-375	340



GLB-1-RC

INOX STAINLESS STEEL

Code	Description	⚖
419162	GLB-1-RC-46-375	340



GLB-1-RT

INOX STAINLESS STEEL

Code	Description	⚖
419163	GLB-1-RT-46-375	340

## SELF-SUPPORTING STRUCTURE

Acetal resin based (POM) technopolymer, black colour.

## PINS

AISI 304 stainless steel.

## ROLLERS

Polyethylene based (PE) technopolymer, grey colour.

## STANDARD EXECUTIONS

- **GLB-2-RS**: with shaped rollers, spherical contact.
- **GLB-2-RC**: with cylindrical rollers.
- **GLB-2-RT**: with shaped rollers, cylindrical contact.

## FEATURES AND APPLICATIONS

GLB-2 side guides are modular self-supporting structures for the side guide of products with important vertical dimensions on conveyor belts (Fig.1).

Particularly suitable for use in wet environments.

Depending on the product to transport, it is recommended to use:

- GLB-2-RS: for the guide of products in cans or in plastic containers;
- GLB-2-RC: for the guide of cardboard products, for a greater fluency;
- GLB-2-RT: for the guide of glass products, in case of accidental breakage they facilitate the expulsion of debris.

The joint in the roller side guides allows an external curvature radius 500 mm, internal curvature radius 350 mm.

Supplied already assembled in modules of 375 mm length, for profiles 40x8 mm.

## SPECIAL EXECUTIONS ON REQUEST

- Side guides with self-supporting structure and rollers in different colours.
- Side guides with pins in acetal resin based (POM) technopolymer.

## ACCESSORIES ON REQUEST

- PRA-GLB: AISI 304 stainless steel profile for side guides.
- PRB-GLB: AISI 304 stainless steel profile for side guides.

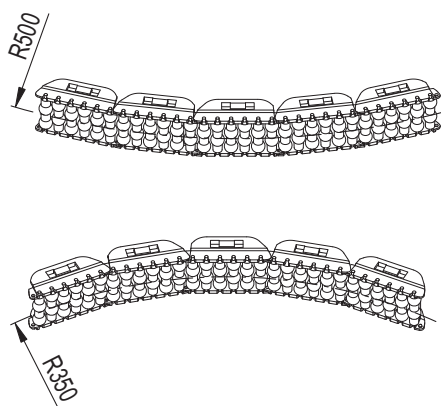
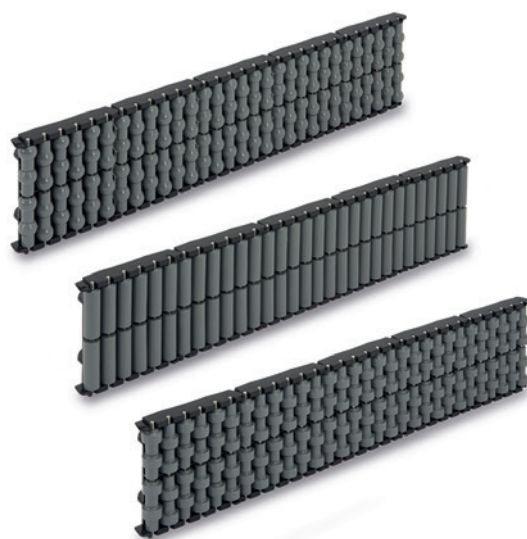
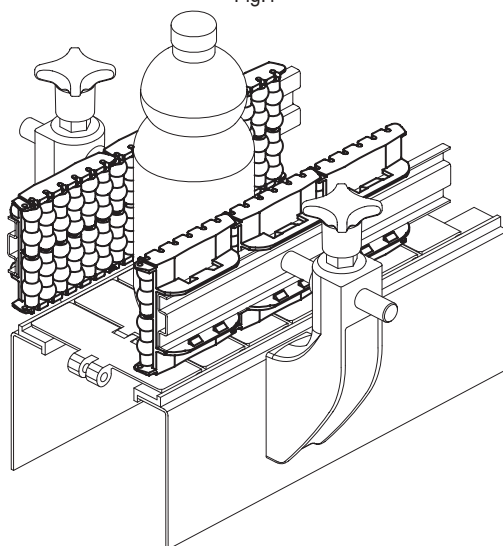
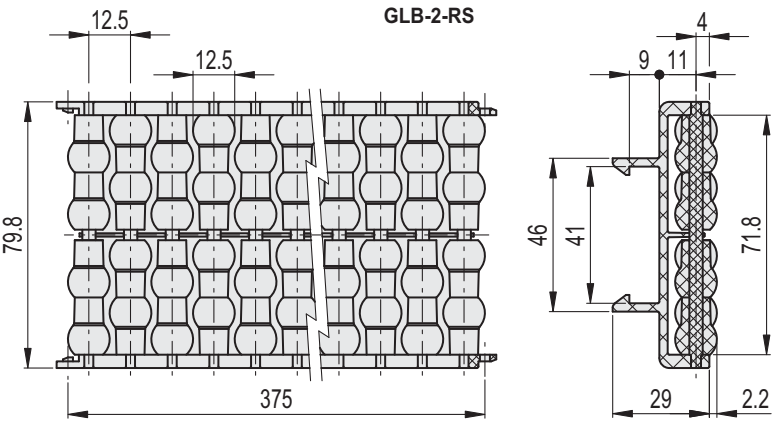


Fig.1

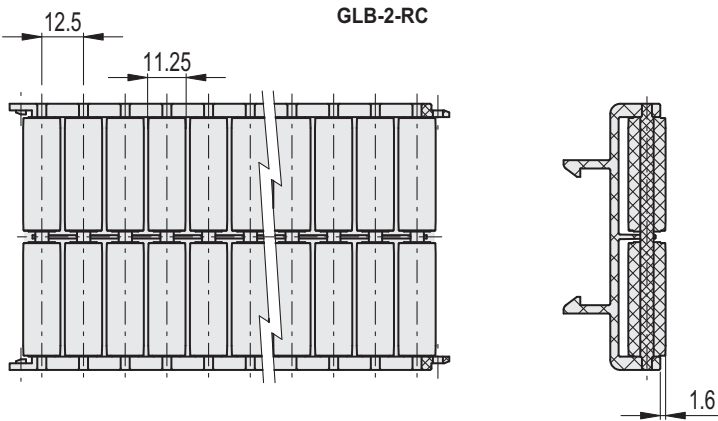




**GLB-2-RS**

Code	Description	⚖
419171	GLB-2-RS-80-375	690

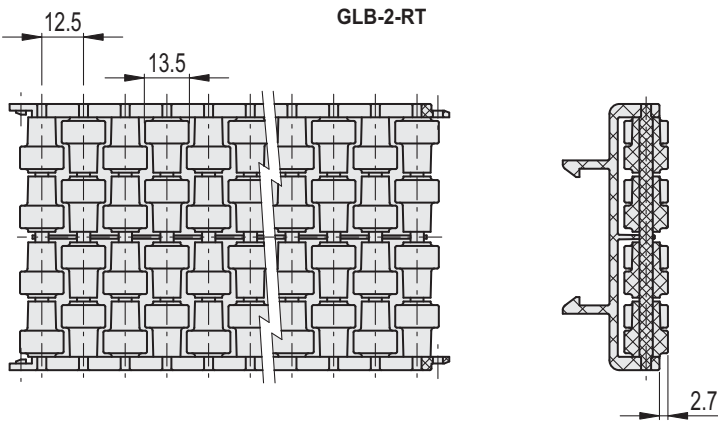
**INOX** STAINLESS STEEL



**GLB-2-RC**

Code	Description	⚖
419172	GLB-2-RC-80-375	690

**INOX** STAINLESS STEEL



**GLB-2-RT**

Code	Description	⚖
419173	GLB-2-RT-80-375	690

**INOX** STAINLESS STEEL

**MATERIAL**

AISI 304 stainless steel

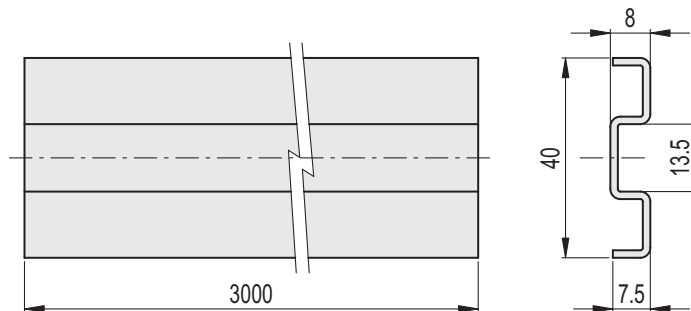
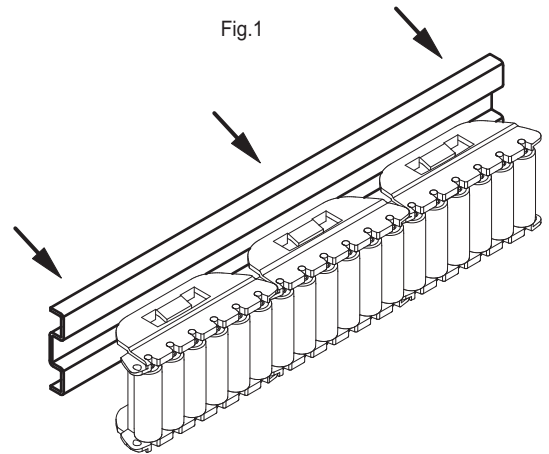
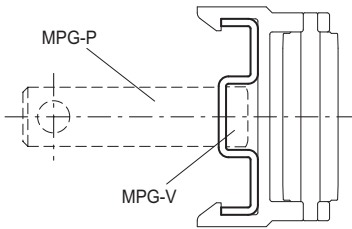
**FEATURES AND APPLICATIONS**

PRA-GLB profile is used for GLB-1 and GLB-2 side guides assembly (Fig.1).

Supplied in bars not drilled of 3 metres length, to allow the drilling during the assembly.

**ACCESSORIES ON REQUEST**

- MPG-P: assembly pin.
- MPG-V: hammer head screw (see GLA-1).



Code	Description	⚖
419181	PRA-GLB-40-3000	2020



MATERIAL

AISI 304 stainless steel

FEATURES AND APPLICATIONS

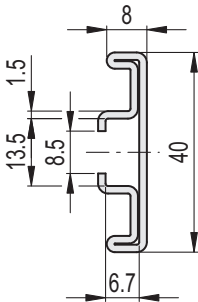
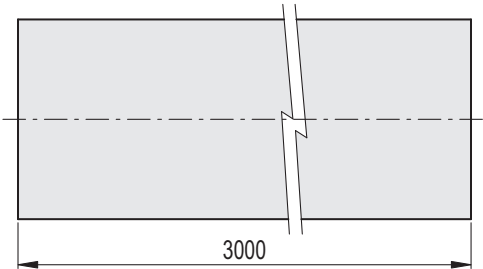
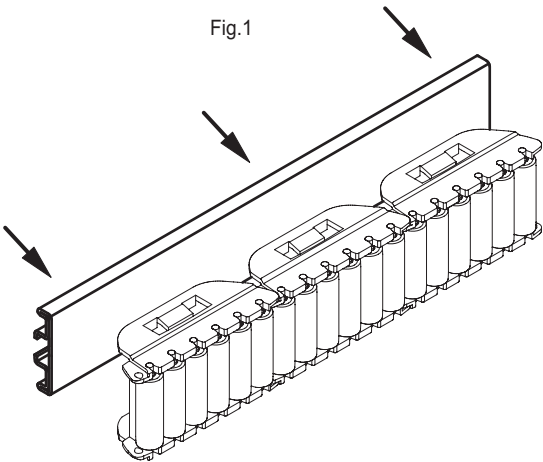
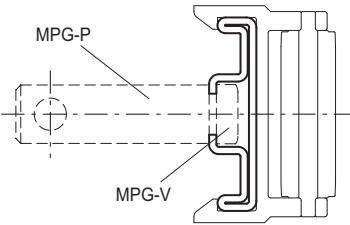
PRB-GLB profile is used for the assembly of GLB-1 and GLB-2 side guides (Fig.1).  
Supplied in bars of 3 metres length.

ACCESSORIES ON REQUEST

BDG: zinc-plated steel connecting bar for guides.

ACCESSORIES ON REQUEST

- MPG-P: assembly pin.
- MPG-V: hammer head screw (see GLA-1).



Code	Description	⚖
419183	PRB-GLB-40-3000	3640

**GUIDE PROFILE**

Polyethylene based (HMWPE) technopolymer, natural colour.

**BRACKET**

AISI 304 stainless steel.

**STANDARD EXECUTIONS**

- **GLP-12:** contact surface width of about 12 mm.
- **GLP-32:** contact surface width of about 32 mm.

**FEATURES AND APPLICATIONS**

GLP guide rails are used for the side guide of products with different dimensions on conveyor belts (Fig.1), without leaving traces on the containers.

High molecular weight polyethylene (HMWPE) has a high wear resistance; it is particularly suitable for high-speed movements due to its low coefficient of friction.

Depending on the product to transport, it is recommended to use:

- GLP-12: for the guide of products with limited dimensions or for GLP-32 support (Fig.2);
  - GLP-32: for the guide of products with important vertical dimensions.
- Supplied in bars of 3 metres length.

**ACCESSORIES ON REQUEST**

Guide rail clamps MPG-T-S, MPG-2T, MPG-T.

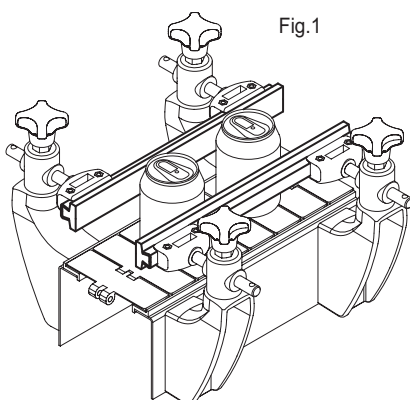


Fig.1

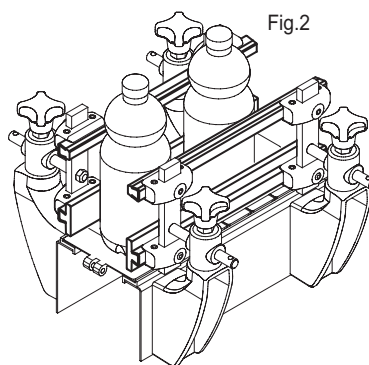
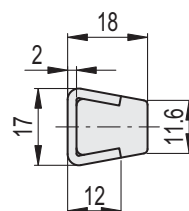
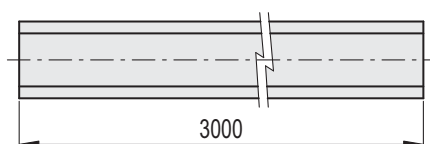
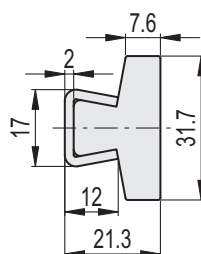
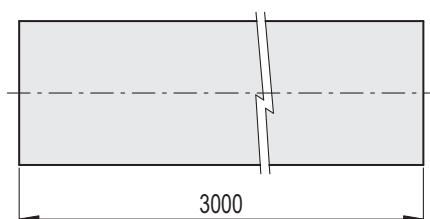


Fig.2

**GLP-12****GLP-32****GLP-12**

Code	Description	⚖
419201	GLP-12-3000	2070

**GLP-32**

Code	Description	⚖
419202	GLP-32-3000	2640

**GUIDE PROFILE**  
Polytetrafluoroethylene based (PTFE) technopolymer, natural colour.

**BRACKET**  
AISI 304 stainless steel.

**FEATURES AND APPLICATIONS**  
GLP-HP guide rail is used for the side guide of products with different dimensions on conveyor belts (Fig.1), in environments with high temperature, such as ovens, fryers, steam chambers. It can also be used as a support for metal meshes inside ovens (Fig. 2)  
Supplied in bars of 3 metres length.

**ACCESSORIES ON REQUEST**  
Guide rail clamps MPG-T-S, MPG-2T, MPG-T.



Fig.1

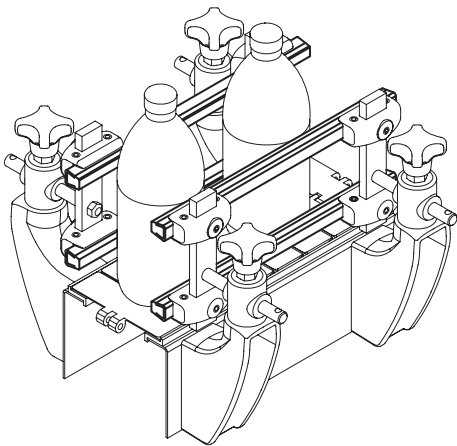
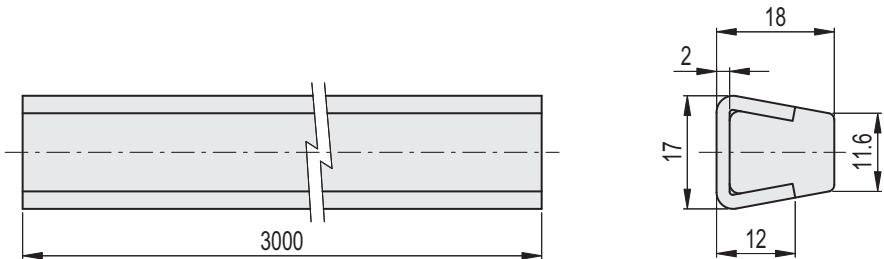
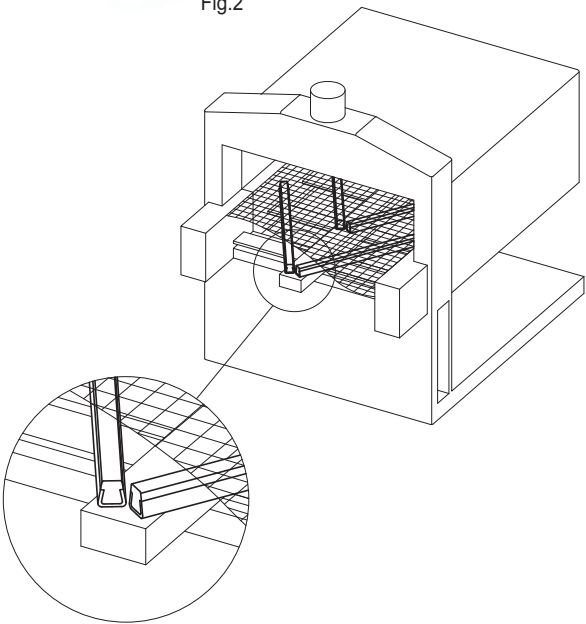


Fig.2



Code	Description	⚖
419207	GLP-HT-12-3000	2880

**GUIDE PROFILE**

Polyethylene based (HMWPE) technopolymer, natural colour.

**BRACKET**

AISI 304 stainless steel.

**FEATURES AND APPLICATIONS**

GLR guide rail is used to guide very unstable products on conveyor belts, such as bottles (Fig.1) or cans (Fig.2), avoiding rotation, without leaving traces on the containers.

High molecular weight polyethylene (HMWPE) has a high wear resistance; it is particularly suitable for high-speed movements due to its low coefficient of friction.

It can be used with GLP-12 guide rail.

Supplied in bars of 3 metres length.

**ACCESSORIES ON REQUEST**

Guide rail clamps MPG-T-S, MPG-2T, MPG-T.



Fig.1

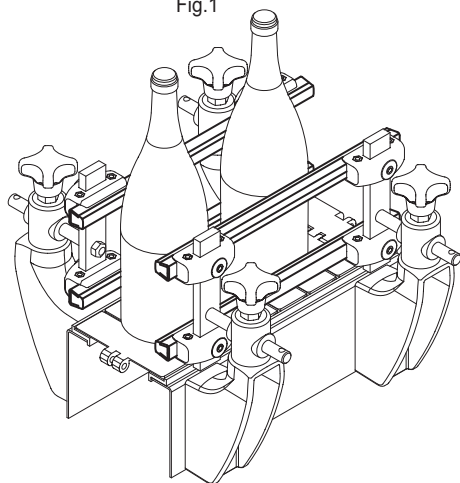
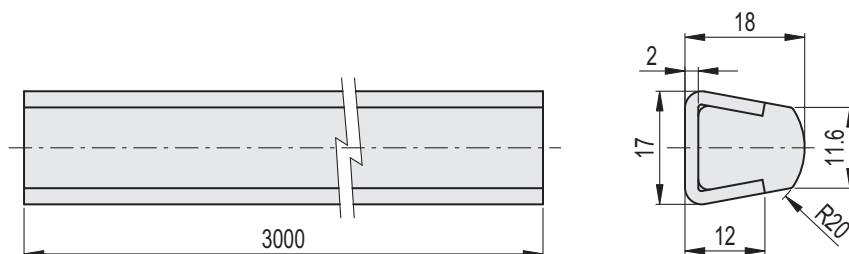
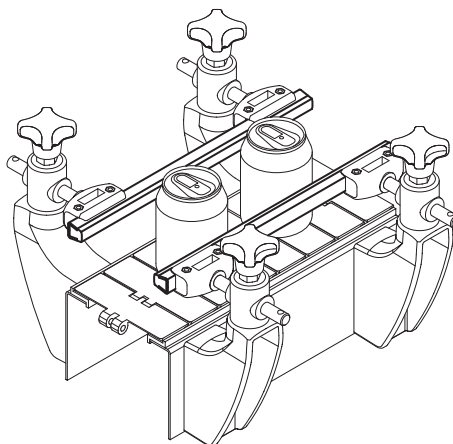


Fig.2



Code	Description	⚖️
419217	GLR-12-3000	2070

**GUIDE PROFILE**

Polyethylene based (HMWPE) technopolymer, natural colour.

**BRACKET**

AISI 304 stainless steel.

**FEATURES AND APPLICATIONS**

GLS guide rail with shaped profile is used for the side guide of products with different dimensions on conveyor belts (Fig.1), without leaving traces on the containers.

High molecular weight polyethylene (HMWPE) has a high wear resistance; it is particularly suitable for high-speed movements due to its low coefficient of friction.

They are generally used with GLT or GLP-12 guide rails (Fig.2) in case of products with important vertical dimensions.

Supplied in bars of 3 metres length.

**ACCESSORIES ON REQUEST**

Guide rail clamps MPG-T-S, MPG-2T, MPG-T.



Fig.1

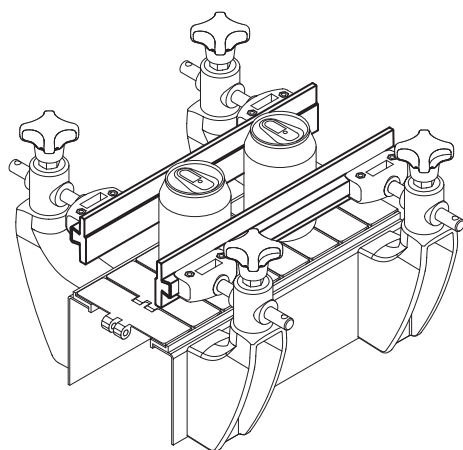
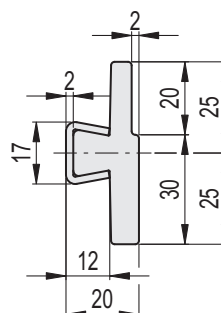
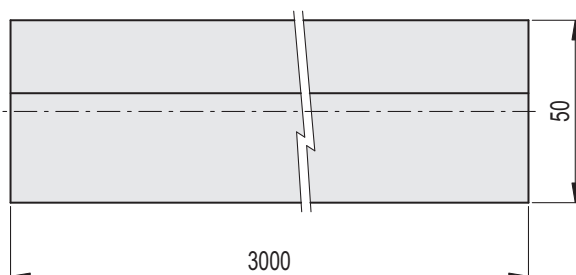
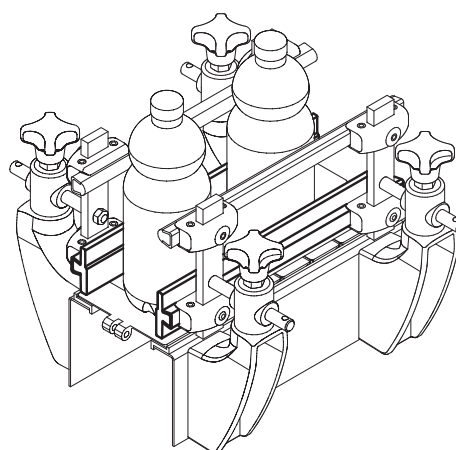


Fig.2



Code	Description	⚖
419212	GLS-50-30-3000	2070

**GUIDE PROFILE**

Polyethylene based (HMWPE) technopolymer, natural colour.

**BRACKET**

AISI 304 stainless steel

**FEATURES AND APPLICATIONS**

GLT guide rail for the side guide of products with a good stability on conveyor belts (Fig.1), without leaving traces on the containers.

High molecular weight polyethylene (HMWPE) has a high wear resistance; it is particularly suitable for high-speed movements due to its low coefficient of friction.

Supplied in bars of 3 metres length.

**SPECIAL EXECUTIONS ON REQUEST**

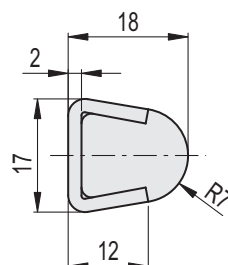
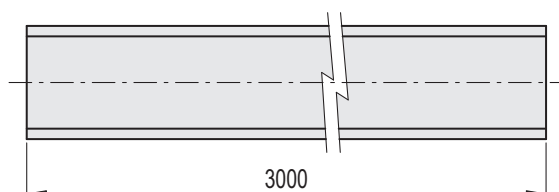
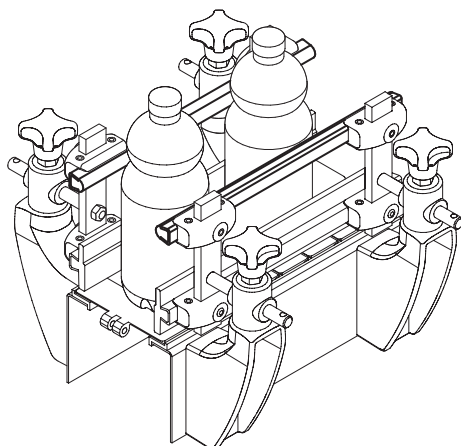
Guide rails in blue colour RAL 5005.

**ACCESSORIES ON REQUEST**

Guide rail clamps MPG-T, MPG-2T, MPG-T-S.



Fig.1

INOX STAINLESS  
STEEL

Code	Description	⚖
419197	GLT-14R7-3000	2070



**MATERIAL**

Polyethylene based (HMWPE) technopolymer, black colour.

**STANDARD EXECUTIONS**

- **GLC-20**: with ledge 20 mm.
- **GLC-40**: with ledge 40 mm.

**FEATURES AND APPLICATIONS**

GLC guide rails are used for the side guide of products with different vertical dimensions on conveyor belts.

High molecular weight polyethylene (HMWPE) has a high wear resistance; it is particularly suitable for high-speed movements due to its low coefficient of friction.

Depending on the product to transport, it is recommended to use:

- GLC-20: for the guide of products with limited vertical dimensions (Fig.1);
- GLC-40: for the guide of products with important vertical dimensions (Fig.2);

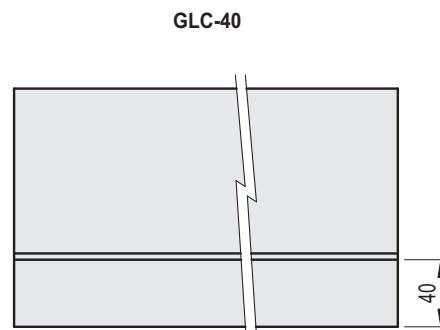
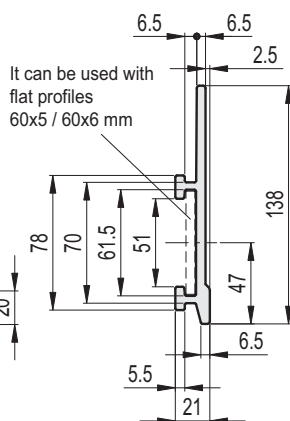
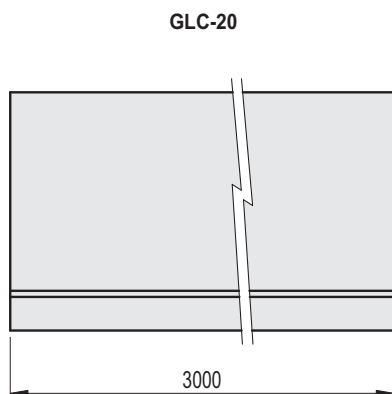
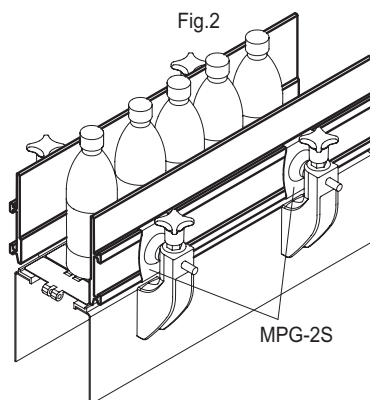
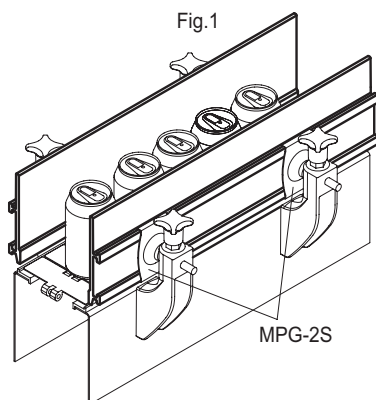
Supplied in bars of 3 metres length.

**SPECIAL EXECUTIONS ON REQUEST**

Guide rails in different colours.

**ACCESSORIES ON REQUEST**

Guide rail clamps MPG-2S.

**GLC-20**

Code	Description	
419191	GLC-138-20-3000	3300

**GLC-40**

Code	Description	
419192	GLC-138-40-3000	3300

**MATERIAL**

Glass-fibre reinforced polyamide based (PA) technopolymer, black colour, matte finish.

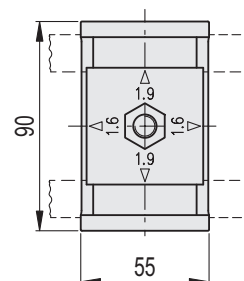
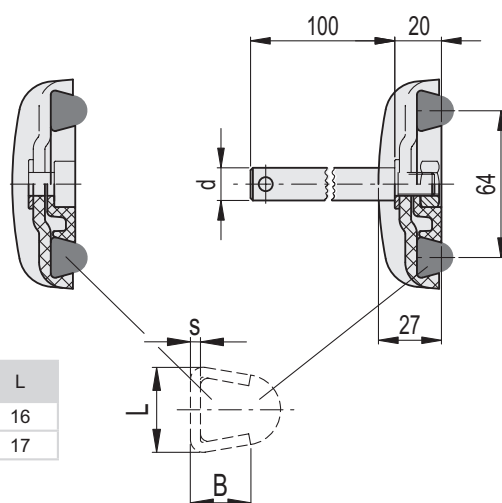
**STANDARD EXECUTIONS**

AISI 304 stainless steel washers.

- **MPG-2T**: housings for standard trapezoidal guides with housing for clamping nut (M10).
- **MPG-2T-P**: housings for standard trapezoidal guides, with AISI 304 stainless steel pin and clamping nut (M10).
- **MPG-2C**: housings for round guides with housing for clamping nut (M10).
- **MPG-2C-P**: housings for round guides, with AISI 304 stainless steel pin and clamping nut (M10).
- **MPG-2R**: housings for rectangular guides with housing for clamping nut (M10).
- **MPG-2R-P**: housings for rectangular guides, with AISI 304 stainless steel pin and clamping nut (M10).
- **MPG-2S**: housings for smooth side guides with AISI 304 stainless steel clamping nut.
- **MPG-2S-P**: housings for smooth side guides with AISI 304 stainless steel pin and clamping nut.

**FEATURES AND APPLICATIONS**

MPG-2T and MPG-2T-P executions can be used with the side guides having an AISI 304 stainless steel bracket of thickness 1.5 or 2 mm, simply rotating the rear plate by 90°.


**MPG-2T**
**MPG-2T-P**


s	B	L
1.5	17.5	16
2	18	17

**MPG-2T  
MPG-2T-P**

Code	Description	d	Δ
419611	MPG-2T	-	67
419684	MPG-2T-P12	12	204
419685	MPG-2T-P14	14	203
419686	MPG-2T-P16	16	202

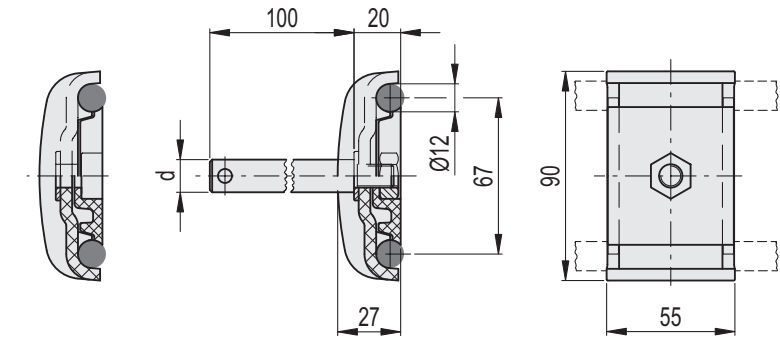
MPG-2C  
MPG-2C-P

INOX STAINLESS STEEL

Code	Description	d	
419609	MPG-2C	-	68
419681	MPG-2C-P12	12	205
419682	MPG-2C-P14	14	204
419683	MPG-2C-P16	16	203

MPG-2C

MPG-2C-P



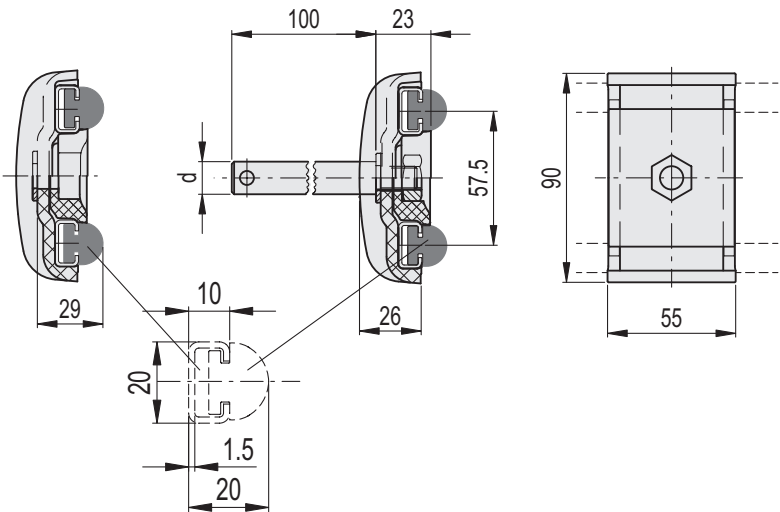
MPG-2R  
MPG-2R-P

INOX STAINLESS STEEL

Code	Description	d	
419610	MPG-2R	-	72
419694	MPG-2R-P12	12	212
419695	MPG-2R-P14	14	210
419696	MPG-2R-P16	16	208

MPG-2R

MPG-2R-P



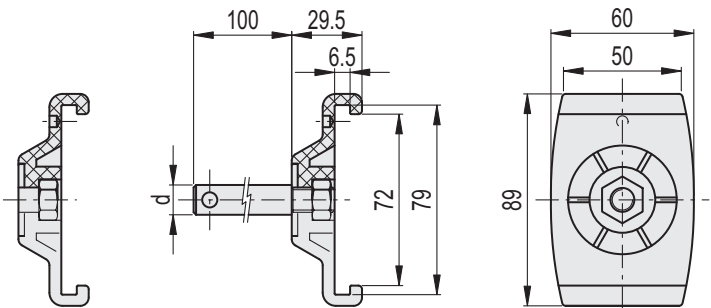
MPG-2S  
MPG-2S-P

INOX STAINLESS STEEL

Code	Description	d	
419608	MPG-2S	-	90
419678	MPG-2S-P12	12	180
419679	MPG-2S-P14	14	210
419680	MPG-2S-P16	16	240

MPG-2S

MPG-2S-P



**MATERIAL**

Glass-fibre reinforced polyamide based (PA) technopolymer, black colour, matte finish.

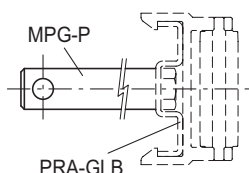
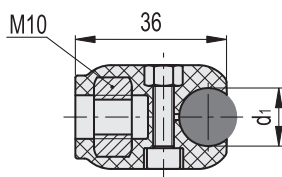
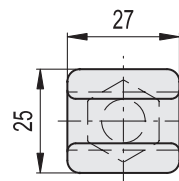
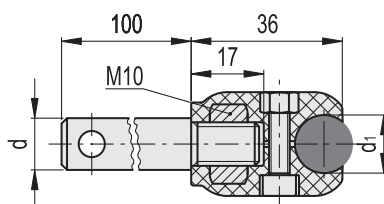
**STANDARD EXECUTIONS**

AISI 304 stainless steel screws and nuts.

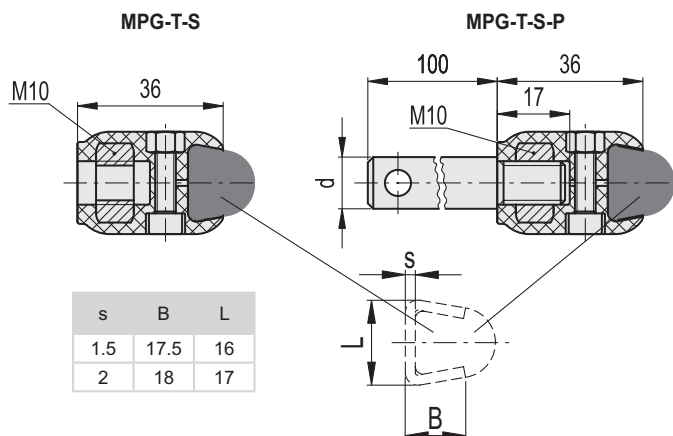
- **MPG-C-S**: housings for round guides, without pin.
- **MPG-C-S-P**: housings for round guides with AISI 304 stainless steel pin.
- **MPG-T-S**: housings for standard trapezoidal guides, without pin.
- **MPG-T-S-P**: housings for standard trapezoidal guides with AISI 304 stainless steel pin.
- **MPG-R-S**: housings for rectangular guides, without pin.
- **MPG-R-S-P**: housings for rectangular guides with AISI 304 stainless steel pin.
- **MPG-P**: AISI 304 stainless steel guide assembly pin.

**FEATURES AND APPLICATIONS**

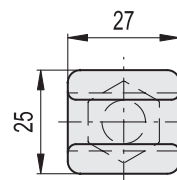
MPG-T-S and MPG-T-S-P executions can be used with the side guides having an AISI 304 stainless steel bracket of thickness 1.5 or 2 mm.


**MPG-C-S**

**MPG-C-S-P**

**MPG-C-S**
**MPG-C-S-P**


Code	Description	d	d1	△
419810	MPG-C-S-8	-	8	37
419811	MPG-C-S-10	-	10	36
419812	MPG-C-S-12	-	12	35
419813	MPG-C-S-14	-	14	34
419798	MPG-C-S-P12-8	12	8	128
419799	MPG-C-S-P12-10	12	10	127
419800	MPG-C-S-P12-12	12	12	126
419801	MPG-C-S-P12-14	12	14	125
419802	MPG-C-S-P14-8	14	8	162
419803	MPG-C-S-P14-10	14	10	161
419804	MPG-C-S-P14-12	14	12	160
419805	MPG-C-S-P14-14	14	14	159
419806	MPG-C-S-P16-8	16	8	198
419807	MPG-C-S-P16-10	16	10	197
419808	MPG-C-S-P16-12	16	12	196
419809	MPG-C-S-P16-14	16	14	195

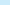


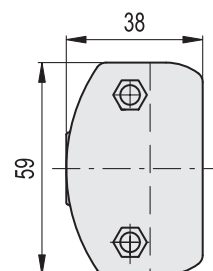
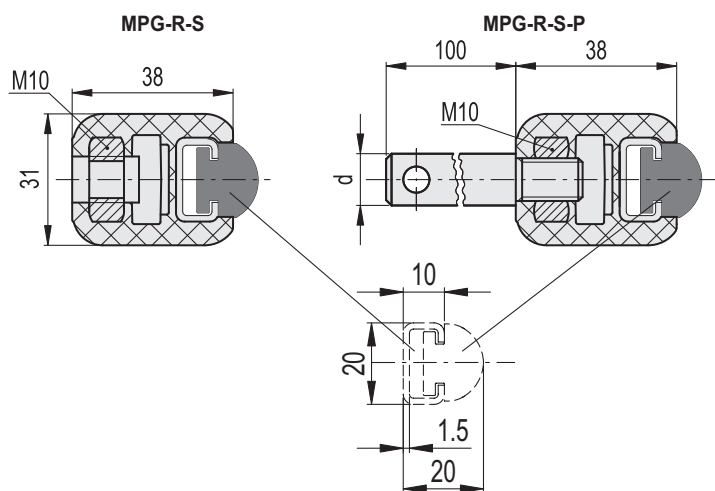
s	B	L
1.5	17.5	16
2	18	17



MPG-T-S  
MPG-T-S-P

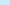


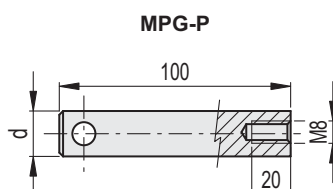
Code	Description	d	
419817	MPG-T-S	-	34
419814	MPG-T-S-P12	12	125
419815	MPG-T-S-P14	14	158
419816	MPG-T-S-P16	16	195



MPG-R-S  
MPG-R-S-P

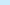


Code	Description	d	
419827	MPG-R-S	-	47
419824	MPG-R-S-P12	12	201
419825	MPG-R-S-P14	14	235
419826	MPG-R-S-P16	16	262



## MPG-P



Code	Description	d	
419690	MPG-P12-M8	12	90
419691	MPG-P14-M8	14	110
419692	MPG-P16-M8	16	130

## MATERIAL

Glass-fibre reinforced polyamide based (PA) technopolymer, black colour, matte finish.

## STANDARD EXECUTIONS

AISI 304 stainless steel cylindrical head screws with hexagon socket, nickel-plated brass nuts.

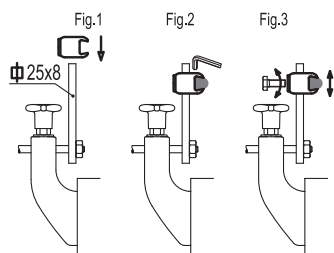
- **MPG-T**: for both the standard trapezoidal guides.
- **MPG-C**: for round guide.
- **MPG-R**: for rectangular guide.

## FEATURES AND APPLICATIONS

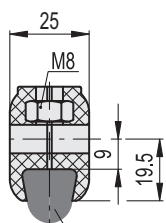
MPG-T execution can be used with the side guides having an AISI 304 stainless steel bracket of thickness 1.5 or 2 mm.

## ASSEMBLY INSTRUCTIONS

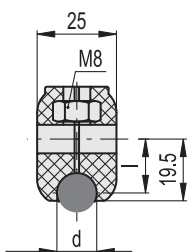
- Mount the guide rail clamp on the support bar (dimension 25x8 mm), the assembly consists in inserting the bar into the specific clamp slot (Fig.1).
- Insert the guide into the clamp housing and then clamp the screws (Fig.2).
- Set the height of the clamp and clamp by means of a M8 screw, not supplied (Fig.3).



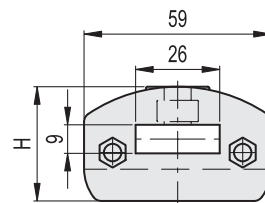
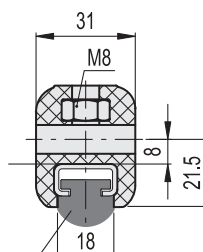
**MPG-T**



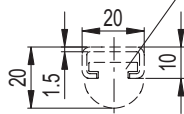
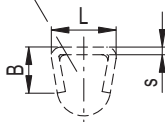
**MPG-C**



**MPG-R**



s	B	L
1.5	17.5	16
2	18	17



INOX  
STAINLESS  
STEEL

Code	Description	d	H	l	⚖
419688	MPG-T	-	36	-	46
419749	MPG-C-8	8	36	16	44
419788	MPG-C-10	10	36	15	45
419687	MPG-C-12	12	36	15	46
419787	MPG-C-14	14	36	15	47
419698	MPG-R	-	38	-	50



**BRACKET**

Glass-fibre reinforced polyamide based (PA) technopolymer, black colour, matte finish.

**STANDARD EXECUTIONS**

Nickel-plated AISI 431 stainless steel eye screw and AISI 304 stainless steel washer.

- **SPF.V:** with glass-fibre reinforced technopolymer clamping knob, black colour, matte finish, nickel-plated brass hexagonal end for clamping by means of a key, threaded hole.
- **SPF.D:** without knob, with AISI 304 stainless steel clamping nut.

**FEATURES AND APPLICATIONS**

Particularly suitable when a linear positioning of the guide rail is required.

The vertical or horizontal positioning of the eye screw improves the assembly where necessary.

Maximum tightening torque for screw assembly 39 Nm.

**ACCESSORIES ON REQUEST**

Spacer for guide rail bracket DSG-A (code 419676), in glass-fibre reinforced technopolymer, black colour, matte finish.

**ASSEMBLY INSTRUCTIONS**

- Fit the guide rail bracket (Fig. 1).
- Insert the washer into the eye screw and screw either the knob or the nut (Fig. 2).
- Insert the eye in its housing either in the horizontal or vertical position (Fig. 3).
- Insert the guide pin in its clamping hole, set the linear positioning and then fasten (Fig. 4).

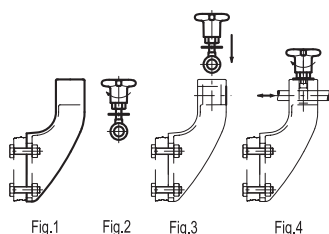


Fig.1



Fig.2

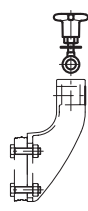


Fig.3

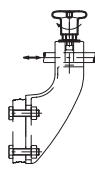
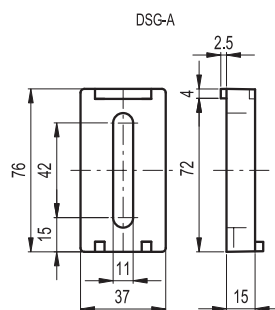
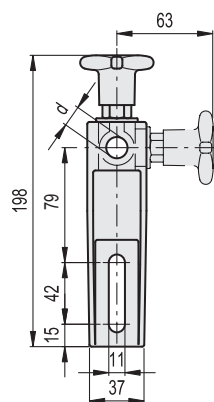


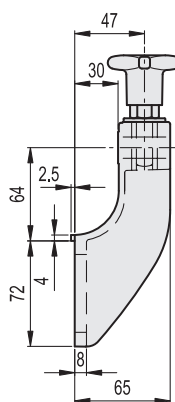
Fig.4



DSG-A



SPF.V



SPF.D

**SPF.V**

Code	Description	d Pin	Δ
419652	SPF.V-12	12	195
419654	SPF.V-14	14	190
419656	SPF.V-16	16	185

**SPF.D**

Code	Description	d Pin	Δ
419653	SPF.D-12	12	175
419655	SPF.D-14	14	170
419657	SPF.D-16	16	165

## BRACKET

Glass-fibre reinforced polyamide based (PA) technopolymer, black colour, matte finish.

## GUIDE RAIL CYLINDER

Glass-fibre reinforced technopolymer. Black colour, matte finish.

## STANDARD EXECUTION

Nickel-plated AISI 431 stainless steel eye screw, AISI 304 stainless steel nut and washer.

- **SPR-A:** with lower lip.
- **SPR-B:** without lower lip.

## FEATURES AND APPLICATIONS

Particularly suitable when linear and angular positioning of the guide rail is required.

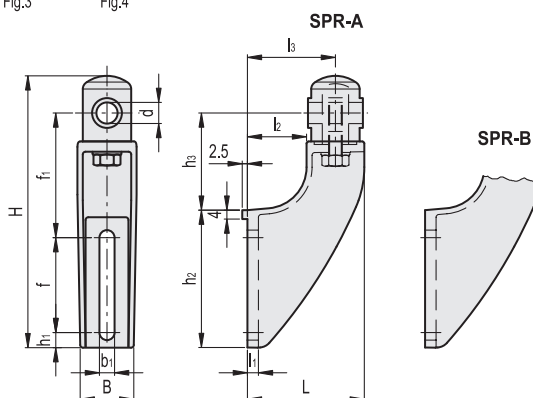
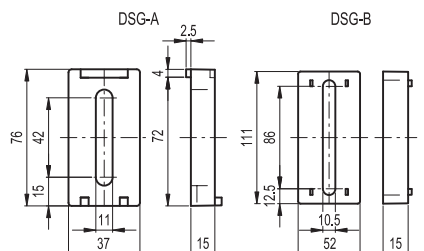
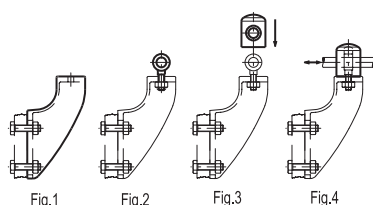
Maximum tightening torque for screw assembly 39 Nm.

## ACCESSORIES ON REQUEST

Spacer for guide rail bracket DSG-A (code 419676) or DSG-B (code 419677) in glass-fibre reinforced technopolymer, black colour, matte finish.

## ASSEMBLY INSTRUCTIONS

- Fit the guide rail bracket (Fig. 1).
- Insert the eye screw in the guide rail support hole and screw the relevant nut and washer (Fig. 2).
- Assemble the guide rail cylinder on the eye (Fig. 3).
- Insert the guide pin in the guide rail cylinder hole. Set its linear and angular position and then fasten the nut (Fig. 4).



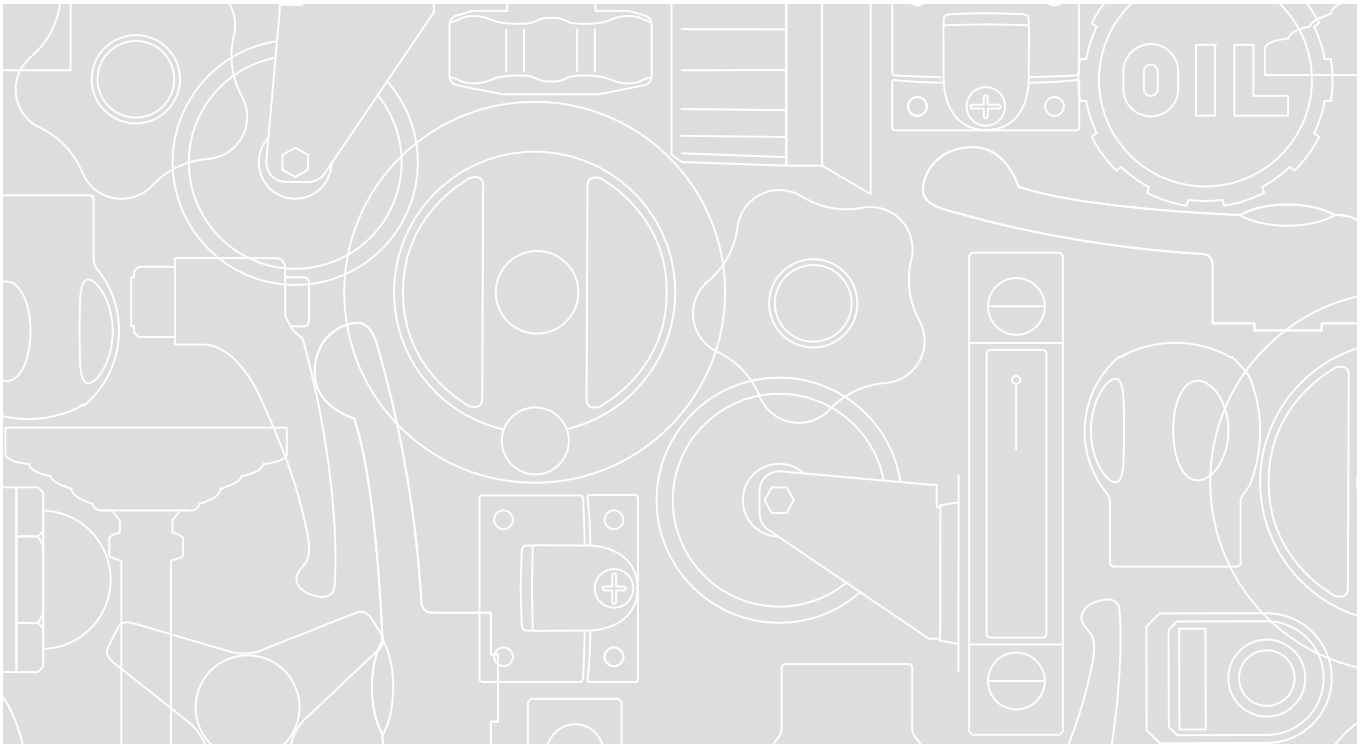
## SPR-A

Code	Description	d Pin	H	L	B	f	f1	b1	h1	h2	h3	l1	l2	l3	△
419760	SPR.12-A	12	158	70	37	42	79	11	15	76	60	8	30	50	176
419761	SPR.14-A	14	158	70	37	42	79	11	15	76	60	8	30	50	175
419762	SPR.16-A	16	158	70	37	42	79	11	15	76	60	8	30	50	174

## SPR-B

Code	Description	d Pin	H	L	B	f	f1	b1	h1	h2	h3	l1	l2	l3	△
419664	SPR.12-B	12	193	85	41	69	90	11	11	100	70	8	43	64	196
419665	SPR.14-B	14	193	85	41	69	90	11	11	100	70	8	43	64	195
419666	SPR.16-B	16	193	85	41	69	90	11	11	100	70	8	43	64	194





**ELESA. More and more...**



**elesa®**

ELESA S.p.A.  
Via Pompei, 29  
20900 Monza (MB) Italy  
phone +39 039 2811.1  
fax +39 039 836351  
info@elesa.com

**elesa.com**