

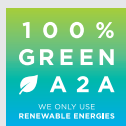


Components for  
medical equipment,  
precision instruments,  
rehab and disability aids

**STANDARD MACHINE ELEMENTS WORLDWIDE**

**elesa®**

**ELESA** presents an extensive range of components in **engineering plastics and metal designed for medical equipment, precision instruments, rehab and disability aids** for applications requiring the use of corrosion resistant materials in compliance with the most rigorous hygienic laws.



The Trademark "100% GREEN" guarantees that the subjects authorised to make use of it, the Users, consume electricity produced by the A2A Group from renewable sources guaranteed by certificates of origin and marketed through one of the Group's companies.



Over 75 years of leadership make ELESA the point of reference for designers and manufacturers. Over 45,000 product codes create an annual production of tens of millions of pieces, more than 200 patents worldwide, 43 international awards in Industrial Design, ISO 9001 certification, ISO 14001, BS OHSAS 18001 and AEOF, are the numbers that sum up our business. 12 foreign branches and a close collaboration with the most qualified distributors worldwide ensure an efficient and timely service coupled with the guarantee of technical consultancy from the groups' Monza Headquarters.

#### Points of strength

- 200 PATENTS AND REGISTERED DESIGNS
- 43 INDUSTRIAL DESIGN AWARDS
- WORLDWIDE DISTRIBUTION
- FULL STOCK AVAILABILITY
- CUSTOMIZED SOLUTIONS
- TECHNICAL COMPETENCE AT THE CUSTOMER'S SERVICE
- ISO 9001 - ISO 14001 - BS OHSAS 18001



FM 23747

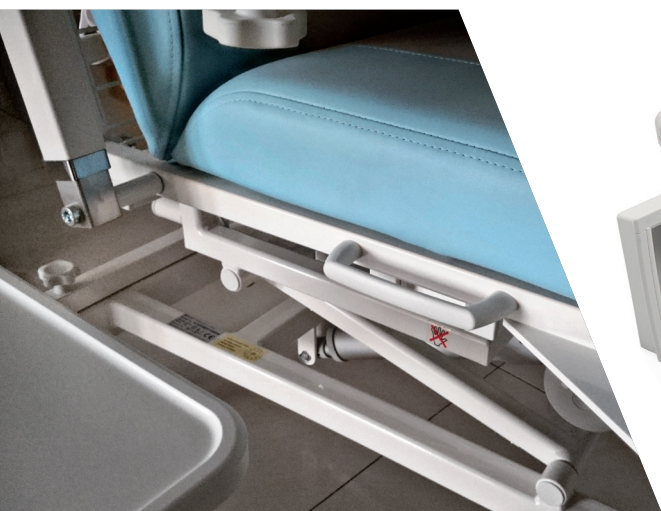


EMS 518430



OHS 584384

**elesa**<sup>®</sup>



## White color with dirt-proof surfaces

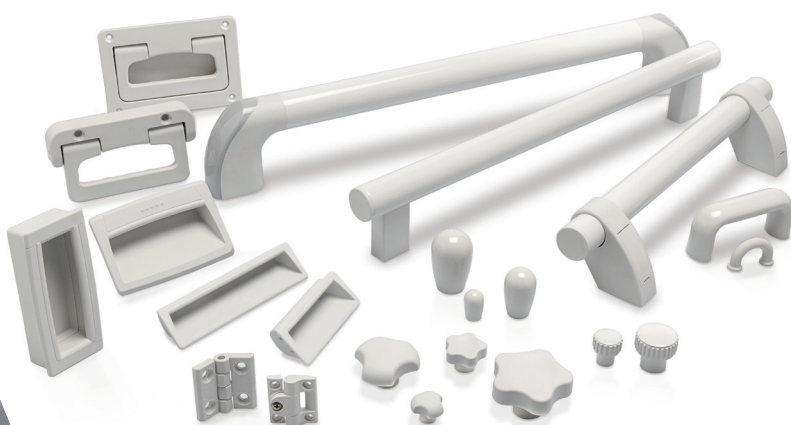
### CLEAN line

The white color RAL 9002 is particularly suitable in medical environments, as it allows the prompt identification of any dust or dirt traces.

From a psychological point of view, it gives the operators and patients a sense of sterility and maximum cleanliness.

Stainless steel inserts for applications where provisions of law make it mandatory to use special corrosion-resistant materials.

Compact shapes, smooth surface and glossy finishing prevent any deposit of dirt, dust or machining residues.



## Corrosion Resistance

### INOX line

ELESA offers a wide range of products in plastic with AISI 303, AISI 304 and AISI 316 stainless steel inserts or entirely made in AISI stainless steel.

Excellent corrosion resistance for applications where provisions of law make it mandatory to use special corrosion-resistant materials.







## Safe, comfortable and non-slip grip

### SOFT-TOUCH line

The SOFT-TOUCH thermoplastic elastomer coating certified according to FDA (U.S. Food and Drug administration) provides a secure, comfortable grip even under unfavorable conditions of use such as in the presence of moisture and grease and improves the comfort for the operator's hand, allowing absorption of any vibrations during operation.

Special addition of color in the molding material or colored plastic caps and covers allow a total aesthetic combination to customer's specific applications.



## Sanitization against microbes, bacteria and fungi

### SAN-Antimicrobial line

Components in a special technopolymer with silver ion additives on an inorganic base (without active pharmaceutical ingredients, antibiotics or pesticides) which prevents the proliferation of unhealthy organisms such as microbes, bacteria and fungi by penetrating the surface of the cells and attacking their DNA. The controlled release mechanism of the silver ions allows the inalterability of the antimicrobial characteristics prolonged over time, even after numerous washing cycles, to guarantee the antimicrobial characteristic of SAN-Antimicrobial line.

SAN-Antimicrobial products are available in technopolymer RAL 7021 grey-black or in the new RAL 9016 white colors.

The laser-engraved logo is clearly recognizable on the matte surface.

### Laboratory tests

Laboratory tests show that 98.9% of bacteria load is eliminated over the course of 24 hours (ISO 22196: 2011). All components of SAN-Antimicrobial line are provided with the Statement of Compliance "Antimicrobial Properties of Materials". Tests were carried out by CSI S.p.A., an accredited and recognized laboratory by ACCREDIA (n.0006), being the National Accreditation Body. The laboratory complies with the requirements of UNI CEI EN ISO / EC 17025.

Certificate identification: C0144 \ FPM \ FOOD \ 19\_1\_2.



### Strains used

- Staphylococcus Aureus ATCC® 25923™ (antimicrobial activity 99.9%)
- Escherichia Coli ATCC® 25922™ (antimicrobial activity 99.9%)
- Klebsiella Pneumoniae ATCC® 13883™ (antimicrobial activity 99.8%)
- Pseudomonas Aeruginosa ATCC® 27853™ (antimicrobial activity 99.9%)
- Candida Albicans ATCC® 10231™ (antimicrobial activity 98.9%)



## Ergonomics and Design. The service of functionality and security

Ergostyle® elements were initially conceived for a series of new market segment applications including hospital and medical equipment, sports and leisure equipment, scientific instrumentation and office furniture. Nowadays Ergostyle elements are also applied in more traditional industrial sectors, whose machines and equipment have undergone a profound aesthetic and design renovation over the last few decades. Elements with modern, elegant shapes with inserts in 7 ELECOLORS® allow the components to be better integrated on machinery from an aesthetical point of view contributing to enhance their value. In addition, the colored inserts can be used to differentiate machinery functions.

The 7 ELECOLORS® colors



ERGOSTYLE®  
by ELESsa



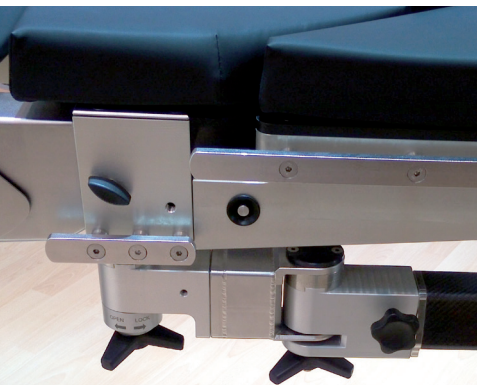
CT.476, VC.692, VB.639



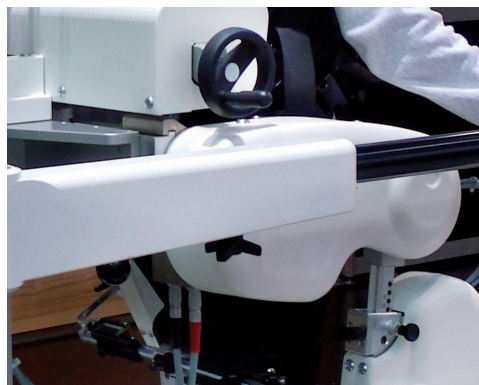
VRTP+I, ERX., PMT.100



MBT., GN 607.2



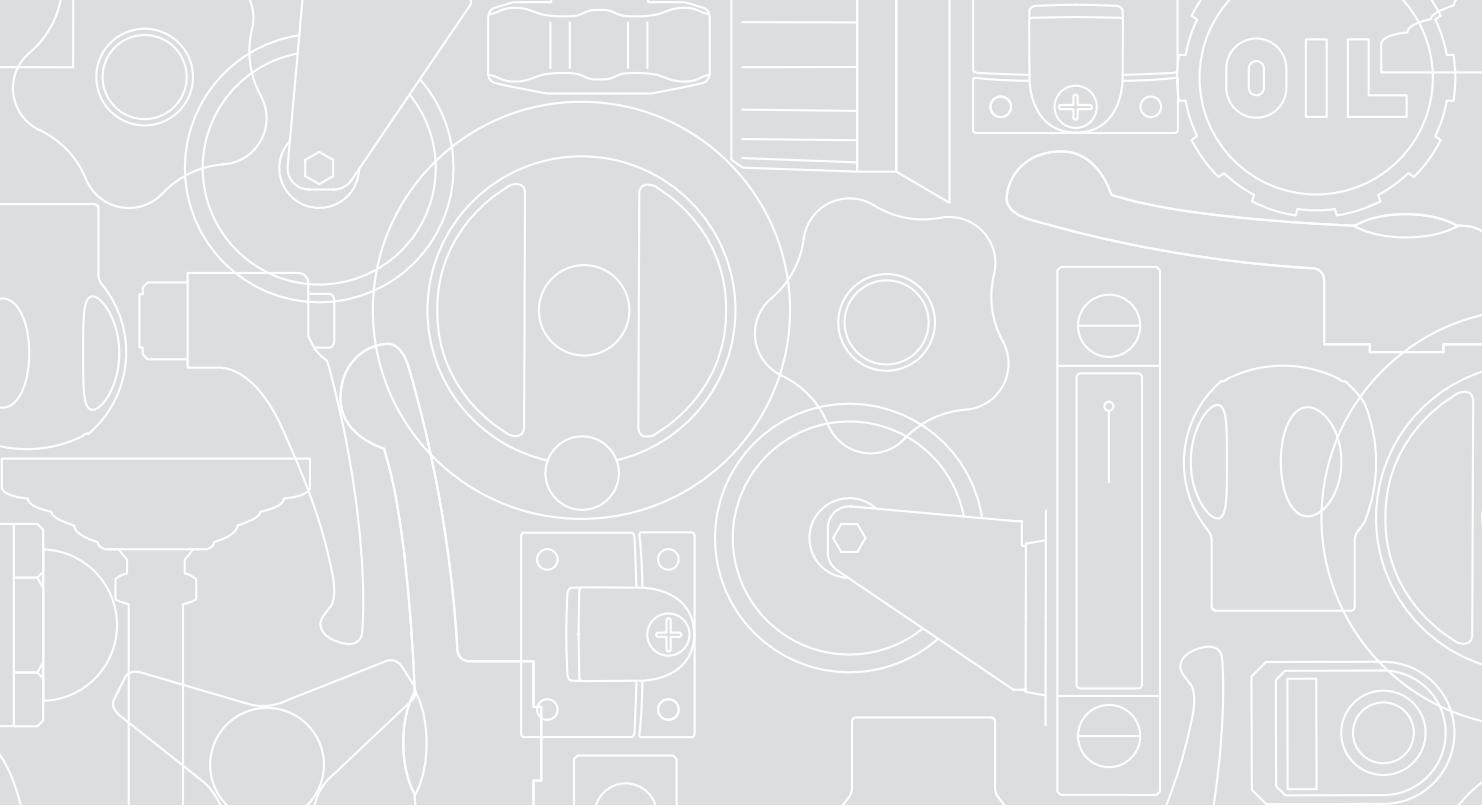
Clamping knobs and wing knobs in technopolymer with stainless steel inserts.



Maneuvering, clamping and positioning elements in technopolymer and SUPER-Technopolymer.



Clamping knobs and positioning elements in technopolymer and zinc-plated inserts.



**ELESA. More and more...**



**elesa®**

**Elesa USA Corporation**  
1930 Case Parkway N.  
Twinsburg, Ohio 44087  
Phone: 330-405-1300  
Toll Free: 800-374-7686  
Fax: 330-405-1310

[elesainfo@elesausa.com](mailto:elesainfo@elesausa.com)

[elesa.com](http://elesa.com)

ZDEPMEDICALENG17AM