

## Spoked handwheels



- **Material**  
High-resilience polypropylene based (PP) technopolymer. Resistant to solvents, oils, greases and other chemical agents.
- **Colour**  
Grey-black, matte finish.
- **Assembly**  
Black-oxide steel boss, H7 reamed hole.
- **Boss cap**  
Polyamide based (PA) technopolymer in Ergostyle colours, matte finish; supplied not assembled, push-fit assembly, removable by a screwdriver. Available also as accessory sold separately (see table below).

Code	Description	Boss cap for
29552-*	ECB.T2-*	ETW.125
29553-*	ECB.T3-*	ETW.160
29554-*	ECB.T4-*	ETW.200

\* Complete the code and the description adding the index of the colour (C1, ..., C6).

### Accessories on request

Axial retaining washer type GN 184 (see page 502).

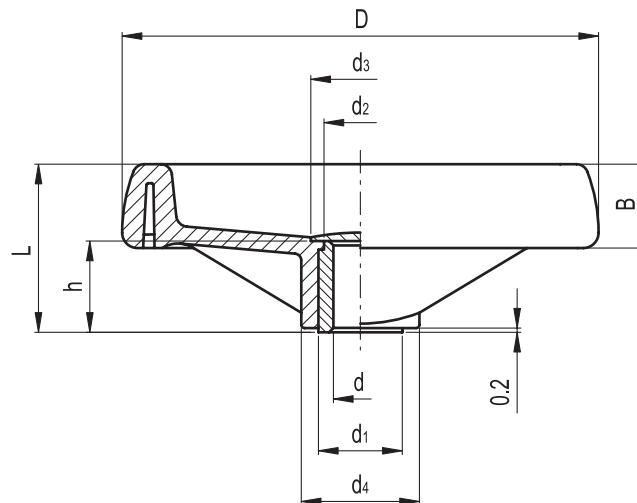
### Special executions on request

Bosses with hole and keyway in compliance with DIN 6885/1 P9 tolerance (see page A17).

To order the handwheel with keyway complete code and description with the index -K (i.e. 205141-K- ETW.125 A-12-K).

### Ergonomy and design

The rim with ergonomic profile offers a safe and comfortable grip when turning the handwheel with both hands even when high torque values are applied.



**C1** RAL 7021 **C2** RAL 2004 **C3** RAL 7035 **C4** RAL 1021 **C5** RAL 5024 **C6** RAL 3000

Elesa Standards		Main dimensions							Bore		C #	L #	⚖
Code	Description	D	L	B	d1	d2	d3	d4	d H7	h	[Nm]	[J]	g
205141-*	ETW.125 A-12-*	124	44	22	22	20	26	31	12	22	94	10	160
205151-*	ETW.160 A-14-*	160	51	25	26	24	31.5	40	14	27	185	15	275
205161-*	ETW.200 A-20-*	200	61	28	30	28	36	50	20	34	300	24	430

\* Complete the code and the description of the standard item needed by adding the index of the colour of the cap (C1, ..., C6), es: 205141-C2 ETW.125 A-12-C2

# See Technical Data (page A8) for maximum applicable torque (C) and impact strength (L).