

Spoked handwheels with fold-away handle



• Material

High-resilience polypropylene based (PP) technopolymer. Resistant to solvents, oils, greases and other chemical agents.

• Colour

Grey-black, matte finish.

• Assembly

Black-oxide steel boss, H7 reamed hole.

• Boss cap

Polyamide based (PA) technopolymer in Ergostyle colours, matte finish; supplied not assembled, push-fit assembly, removable by a screwdriver. Available also as accessory sold separately (see table below).

Code	Description	Boss cap for
29552-*	ECB.T2-*	ETW.125
29553-*	ECB.T3-*	ETW.160
29554-*	ECB.T4-*	ETW.200

* Complete the code and the description adding the index of the colour (C1,...,C6).

• Fold-away handle

Type EFH. (see page 353) high-resilience polypropylene based (PP) technopolymer, grey-black colour, matte finish. The two-volume special design and the semi-spherical end provide the operator's hand with a safe and ergonomic grip during rotation of the handwheel.

Accessories on request

Axial retaining washer type GN 184 (see page 502).

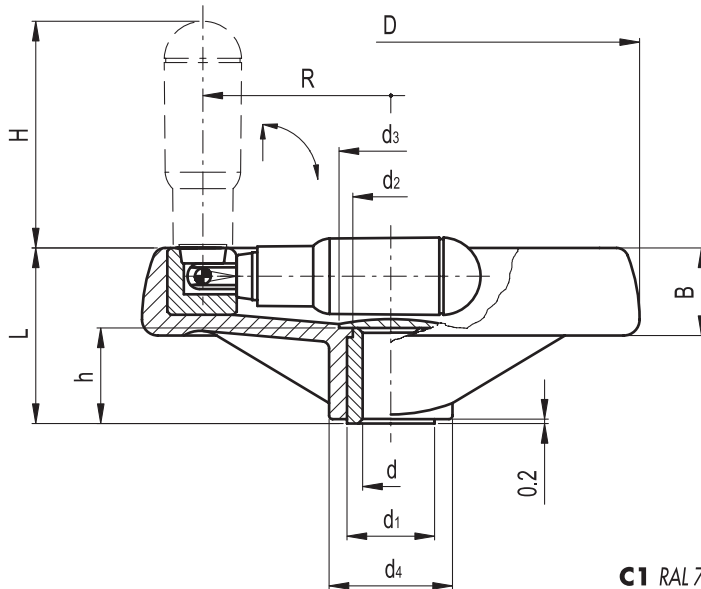
Special executions on request

Bosses with hole and keyway in compliance with DIN 6885/1 P9 tolerance (see page A17).

To order the handwheel with keyway complete code and description with the index -K (i.e. 205441-K- ETW.125+IR A-12-K).

Other dimensions

For diameter 375 mm see ETW.375+IR (see page 99).



C1 RAL 7021	C2 RAL 2004	C3 RAL 7035	C4 RAL 1021	C5 RAL 5024	C6 RAL 3000

Elesa Standards		Main dimensions							Bore		Handle		C #	L #	△△
Code	Description	D	L	B	d1	d2	d3	d4	d H7	h	H	R	[Nm]	[J]	g
205441-*	ETW.125+IR A-12-*	124	44	22	22	20	26	31	12	22	73	48	94	10	210
205451-*	ETW.160+IR A-14-*	160	51	25	26	24	31.5	40	14	27	86	65	185	15	375
205461-*	ETW.200+IR A-20-*	200	61	28	30	28	36	50	20	34	95	84	300	24	540

* Complete the code and the description of the standard item needed by adding the index of the colour of the cap (C1,...,C6), es: 205441-C2 ETW.125+IR A-12-C2

See Technical Data (page A8) for maximum applicable torque (C) and impact strength (L).