



ESW+I

ERGOSTYLE®

ELESA Original design

Solid handwheels with revolving handle



- **Material**
High-resilience polypropylene based (PP) technopolymer. Resistant to solvents, oils, greases and other chemical agents.
- **Colour**
Grey-black, matte finish.
- **Assembly**
Black-oxide steel boss, H7 reamed hole.
- **Boss cap**
Polyamide based (PA) technopolymer in Ergostyle colours, matte finish; supplied not assembled, push-fit assembly, removable by a screwdriver. Available also as accessory sold separately (see table below).

Code	Description	Boss cap for
29592-*	ECB.S2-*	ESW.125
29593-*	ECB.S3-*	ESW.150
29594-*	ECB.S4-*	ESW.175

* Complete the code and the description adding the index of the colour (C1, ..., C6).

- **Revolving handle**
Type ECH+x on (see page 340) high-resilience polypropylene based (PP) technopolymer, grey-black colour, matte finish. The two-volume special design and the semi-spherical end provide the operator's hand with a safe and ergonomic grip when turning the handwheel.

Accessories on request

Axial retaining washer type GN 184 (see page 502).

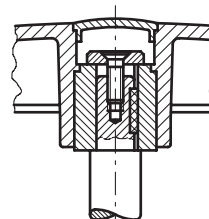
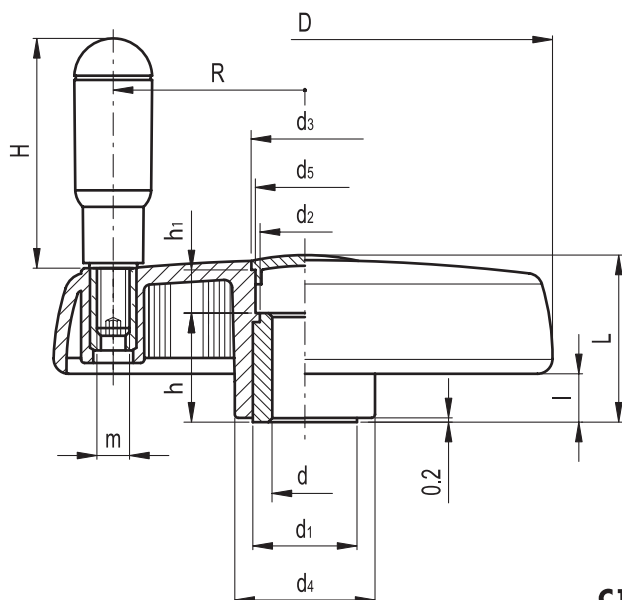
Special executions on request

Bosses with hole and keyway in compliance with DIN 6885/1 P9 tolerance (see page A17).

To order the handwheel with keyway complete code and description with the index -K (i.e. 207241-K- ESW.125+I A-12-K).

Ergonomy and design

The rim with internal rear scallops makes the grip and the manoeuvre of the handwheel easier even from side positions.



Assembly example with keyway
and axial set screw

C1 RAL 7021 **C2** RAL 2004 **C3** RAL 7035 **C4** RAL 1021 **C5** RAL 5024 **C6** RAL 3000

Elesa Standards		Main dimensions									Bore		Handle			C #	L #	⚖
Code	Description	D	L	I	d1	d2	d3	d4	d5	h1	d H7	h	H	m	R	[Nm]	[J]	g
207241-*	ESW.125+I A-12-*	125	42.5	11	26	24	31	35	29	13.5	12	27	65	M6	47	125	25	245
207251-*	ESW.150+I A-14-*	150	47.5	12	26	24	34	38	32	15.5	14	30	73	M8	57	180	26	350
207261-*	ESW.175+I A-16-*	176	52.5	13	35	33	39	44	36	22.5	16	28	86	M10	70	195	26	475

* Complete the code and the description of the standard item needed by adding the index of the colour of the cap (C1, ..., C6), es: 207241-C2 ESW.125+I A-12-C2

See Technical Data (page A8) for maximum applicable torque (C) and impact strength (L).