

Solid handwheels with fold-away handle



- **Material**
High-resilience polypropylene based (PP) technopolymer. Resistant to solvents, oils, greases and other chemical agents.
- **Colour**
Grey-black, matte finish.
- **Assembly**
Black-oxide steel boss, H7 reamed hole.
- **Boss cap**
Polyamide based (PA) technopolymer in Ergostyle colours, matte finish; supplied not assembled, push-fit assembly, removable by a screwdriver. Available also as accessory sold separately (see table below).

Code	Description	Boss cap for
29592-*	ECB.S2-*	ESW.125
29593-*	ECB.S3-*	ESW.150
29594-*	ECB.S4-*	ESW.175

* Complete the code and the description adding the index of the colour (C1,...,C6).

- **Fold-away handle**
Type EFH. (see page 353) high-resilience polypropylene based (PP) technopolymer, grey-black colour, matte finish. The two-volume special design and the semi-spherical end provide the operator's hand with a safe and ergonomic grip when turning the handwheel.

Accessories on request

Axial retaining washer type GN 184 (see page 502).

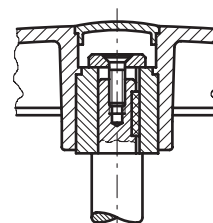
Special executions on request

Bosses with hole and keyway in compliance with DIN 6885/1 P9 tolerance (see page A17).

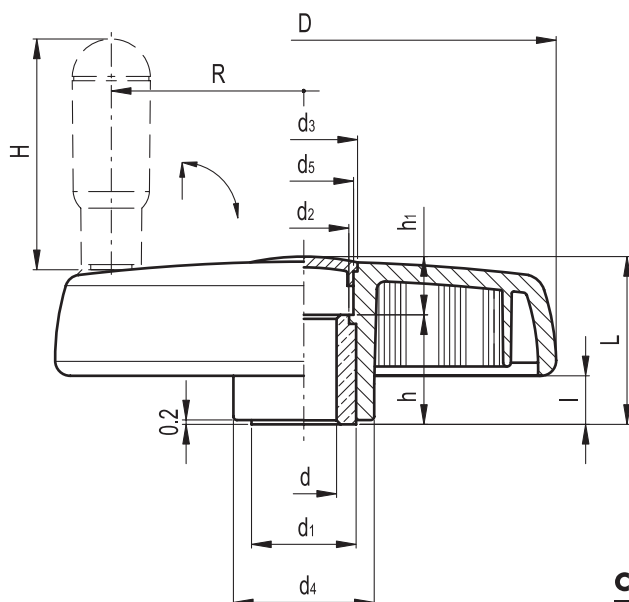
To order the handwheel with keyway complete code and description with the index -K (i.e. 207441-K- ESW.125+IR A-12-K).

Ergonomy and design

The rim with internal rear scallops makes the grip and the manoeuvre of the handwheel easier even from side positions.



Assembly example with keyway
and axial set screw



C1 RAL 7021	C2 RAL 2004	C3 RAL 7035	C4 RAL 1021	C5 RAL 5024	C6 RAL 3000
-------------	-------------	-------------	-------------	-------------	-------------

Elesa Standards		Main dimensions									Bore		Handle		C #	L #	△
Code	Description	D	L	I	d1	d2	d3	d4	d5	h1	d H7	h	H	R	[Nm]	[J]	g
207441-*	ESW.125+IR A-12-*	125	42.5	11	26	24	31	35	29	13.5	12	27	65	47	125	14	275
207451-*	ESW.150+IR A-14-*	150	47.5	12	26	24	34	38	32	15.5	14	30	73	57	180	15	410
207461-*	ESW.175+IR A-16-*	176	52.5	13	35	33	39	44	36	22.5	16	28	86	70	195	20	560

* Complete the code and the description of the standard item needed by adding the index of the colour of the cap (C1,...,C6), es: 207441-C2 ESW.125+IR A-12-C2

See Technical Data (page A8) for maximum applicable torque (C) and impact strength (L).