

Press Release

2/11/2017

When colour is a value

Among its over 40,000 product codes available in stock, ELESa offers an extensive selection of **standard components**, in the **ELECOLORS*** chromatic range: orange, grey, yellow, blue, red and black.

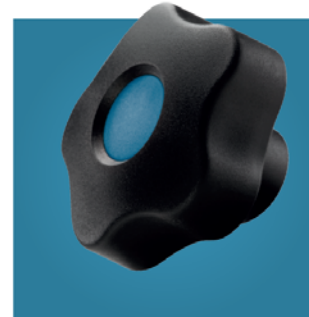
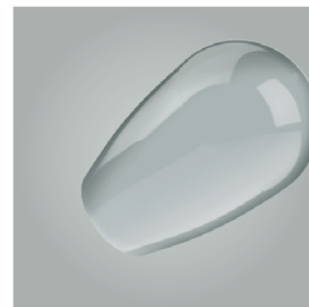
Livelier colours than the traditional grey and green "Reseda", typical of the mechanical industries of the past, these are now accepted and requested by a growing number of sectors. The reasons behind this new market requirement come from an aesthetics renewal process of machine tools and equipment that has transformed the design and requirements (not only technical) of the components.

The Elesa standard in your favourite COLOR

In addition to the award-winning elements of the Ergostyle line, Elesa offers many other standard components to meet the most common manoeuvring and clamping operations with **coloured inserts** or **fully coloured**. A range of products featuring different shapes, surface finishing and colours designed to perfectly fit the equipment they are destined for.

Thanks to Elesa's commitment to offer the highest quality standards also in terms of aesthetics, colours are controlled with the colorimetric spectrodensitometers to ensure maximum colour **consistency** and **repeatability**, both during production and over the entire lifecycle of the components.

ele**colors***



*Trademark application

Press Box

Contact: Daniel Hodson
E-mail: marketing@elesa.co.uk

Elesa (UK) Ltd
26 Moorlands Estate, Metheringham Lincolnshire
LN4 3HX
Tel 01526 322670 – sales@elesa.co.uk

elesa.com

STANDARD MACHINE ELEMENTS WORLDWIDE

elesa®

Ergostyle and many others

In the 1990s, Elesa presented for the first time a line of standard components, the Ergostyle line. Characterised by elegant and ergonomic lines, Ergostyle introduces a new language for both shape and chromatic range, in six different colours. If ergonomics and design of Elesa products are distinctive features, **colour** is an additional option. The use of colour **offers a perfect aesthetic compatibility** between the components and the machines on which they are installed, enhancing the perception of their value and quality. Furthermore, colour allows a better differentiation of different **machine functions**, contributing to the benefit of the **safety**.



Selection of products in a unique **colour**, yours, to characterise in detail with your machine or equipment



Pure orange



Light grey



Colza yellow



Pastel blue



Flame red



Jet black

Black grey

Press Box

Contact: Daniel Hodson
E-mail: marketing@elesa.co.uk

Elesa (UK) Ltd
26 Moorlands Estate, Metheringham Lincolnshire
LN4 3HX
Tel 01526 322670 – sales@elesa.co.uk

elesa.com

STANDARD MACHINE ELEMENTS WORLDWIDE

elesa®