

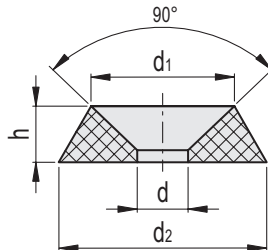
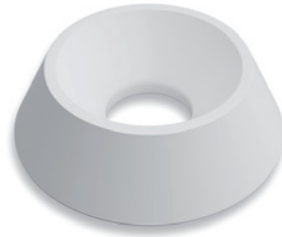
MATERIAL

Polyamide based (PA) technopolymer, natural colour.

FEATURES AND APPLICATIONS

The washer is specifically designed for countersunk-head screws, absorbing shocks and vibrations and also providing electrical insulation. It is made entirely from insulating material that is resistant to corrosion and chemicals. It is suitable for applications in industry, aeronautics, hydraulics, and electronics, and in all cases where weight reduction is required.

The product is tested for mechanical and dimensional performance. Slight colour variations are perfectly normal and do not affect the quality of the product.



METRIC

Code	Description	d	d1	d2	h	⚖️
505641	WSV-4.3-TP-N	4.5	8	12	3	1
505651	WSV-5.3-TP-N	5.5	10	15.5	3.5	1
505661	WSV-6.3-TP-N	6.5	12	17	4.5	1
505671	WSV-8.0-TP-N	8	14.5	22.5	6	1.5