

VTT | Knobs with solid section

Technopolymer, easy cleaning

INCH

INOX
STAINLESS
STEEL

RoHS

PA

+266 °F
-22 °F

- 1
- 2
- 3
- 4
- 5
- 6
- 7
- 8
- 9
- 10
- 11
- 12
- 13
- 14
- 15
- 16
- 17
- 18

MATERIAL

Glass-fibre reinforced polyamide based (PA) technopolymer, black colour, matte finish.

STANDARD EXECUTION

- **VTT-SST**: AISI 304 stainless steel boss, threaded blind hole.
- **VTT-SST-p**: AISI 304 stainless steel threaded stud, chamfered flat end according to ISO 4753 (see Technical data on page A-10).

FEATURES AND APPLICATIONS

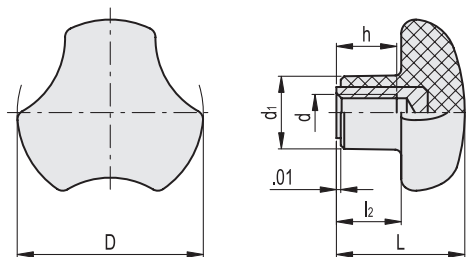
The three-lobe shape with large recesses is particularly ergonomic also for smaller knobs, ensuring an effective grip even with work gloves.

The design without rear cavities, generally suitable for reducing thickness, prevents unhealthy residues from depositing, ensuring easy cleaning. Particularly suitable for applications on machines and equipment whose parts must be frequently cleaned by using water jets or steam.



ELESA Original design

VTT-SST



VTT-SST

INOX STAINLESS STEEL

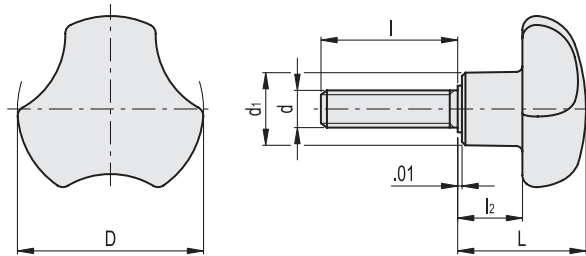
INCH

Code	Description	D	d2B	L	d1	l2	h	△
9167116	VTT.25-SST-10-32	0.98	10-32	0.79	0.47	0.39	0.39	0.02
9167226	VTT.32-SST-1/4-20	1.26	1/4-20	0.91	0.55	0.45	0.39	0.04
9167346	VTT.40-SST-5/16-18	1.57	5/16-18	1.06	0.63	0.53	0.51	0.05
9167476	VTT.50-SST-3/8-16	1.97	3/8-16	1.18	0.75	0.59	0.67	0.08

Clamping knobs



VTT-SST-p



VTT-SST-p

INOX STAINLESS STEEL INCH

Code	Description	D	d2A	L	d1	l	l2	⚖️
9167161	VTT.25-SST-p-10-32x1/2	0.98	10-32	0.79	0.47	0.500	0.39	0.02
9167162	VTT.25-SST-p-10-32x3/4	0.98	10-32	0.79	0.47	0.750	0.39	0.02
9167262	VTT.32-SST-p-1/4-20x1/2	1.26	1/4-20	0.91	0.55	0.500	0.45	0.03
9167263	VTT.32-SST-p-1/4-20x3/4	1.26	1/4-20	0.91	0.55	0.750	0.45	0.04
9167264	VTT.32-SST-p-1/4-20x1	1.26	1/4-20	0.91	0.55	1.000	0.45	0.04
9167381	VTT.40-SST-p-5/16-18x3/4	1.57	5/16-18	1.06	0.63	0.750	0.53	0.06
9167383	VTT.40-SST-p-5/16-18x1	1.57	5/16-18	1.06	0.63	1.000	0.53	0.07
9167385	VTT.40-SST-p-5/16-18x1½	1.57	5/16-18	1.06	0.63	1.250	0.53	0.08
9167387	VTT.40-SST-p-5/16-18x1½	1.57	5/16-18	1.06	0.63	1.500	0.53	0.09
9167491	VTT.50-SST-p-3/8-16x3/4	1.97	3/8-16	1.18	0.75	0.750	0.59	0.1
9167493	VTT.50-SST-p-3/8-16x1	1.97	3/8-16	1.18	0.75	1.000	0.59	0.13
9167495	VTT.50-SST-p-3/8-16x1½	1.97	3/8-16	1.18	0.75	1.250	0.59	0.15
9167497	VTT.50-SST-p-3/8-16x1½	1.97	3/8-16	1.18	0.75	1.500	0.59	0.17

Clamping knobs