



- 1
- 2
- 3
- 4
- 5
- 6
- 7
- 8
- 9
- 10
- 11
- 12
- 13
- 14
- 15
- 16
- 17
- 18
- 19

LOBE SOLID CAP

Glass-fibre reinforced polyamide based (PA) technopolymer, black colour, matte finish, with security anti-intrusion-profiled key slot.

FLANGE

Technopolymer, ultrasonically welded.

CLAMPING ELEMENT

Acetal resin based (POM) technopolymer, black colour, matte finish.

ELASTIC FORK

Acetal-based technopolymer (POM), black colour.

STANDARD EXECUTIONS

- **VLS-B-RC:** brass boss, threaded blind hole.
- **VLS-SST-p-RC:** AISI 304 stainless steel threaded stud, chamfered flat end UNI EN ISO 947 : 4753 (see Technical data on page A-11).

SECURITY KEY (TO BE ORDERED SEPARATELY)

- CSN (on page -) acetal resin based (POM) technopolymer fold-away key, red colour, anti-intrusion-profiled stainless steel insert.
- CSF (on page -) polyamide based (PA) technopolymer ball key, red colour, anti-intrusion-profiled stainless steel insert.

On request and for sufficient quantities the security keys can be supplied in black colour too.

SECURITY DEVICE OPERATION

VLS. security lobe knobs have been designed to be unscrewed only by authorised people, provided with the security key. Without the security key, the knob turns without unscrewing.

1. Clamping: clamp the knob by screwing it as for a normal knob. Mind that the security key is not inserted.
2. Unscrewing: simply insert the security key (without turning it) and unscrew the knob.

FEATURES AND APPLICATIONS

The particular design of the internal device and of the flange helps the drainage of any dirt (dust, earth, liquid).

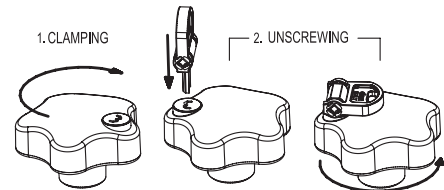
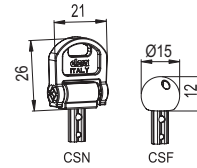
Suitable where it is necessary to prevent the loss of the knob. The elastic fork, housed in the groove of the knob can turn freely.

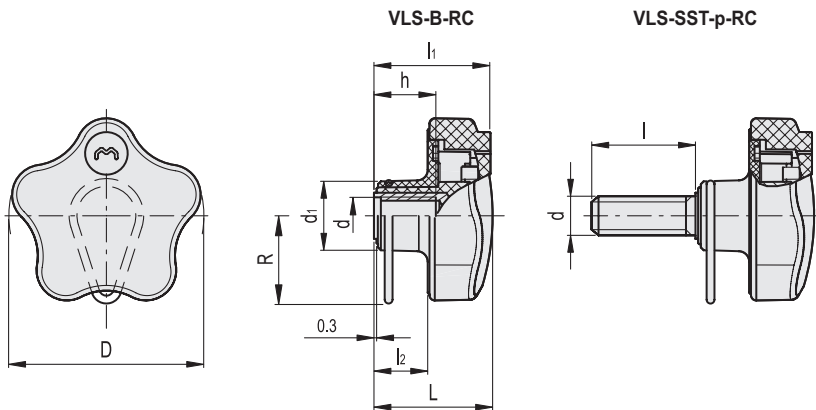
ACCESSORIES ON REQUEST

- CT-S (see page -) technopolymer and stainless steel ball chains.
- GN 111 (see page -) stainless steel and brass ball chains.
- CV-T (see page -) polyethylene and stainless steel retaining cables.
- GN 111.2 (see page -) stainless steel retaining cables.
- GN 111.4 (see page -) polyurethane and stainless steel spiral retaining cables.



ELESA Original design





Conversion Table	
1 mm = 0.039 inch	
D	
mm	inch
55	2.15

VLS-B-RC

METRIC

Code	Description	D	d	L	d1	l1	l2	h	R	⚖
76421	VLS.55 B-M8-RC	55	M8	33	19	32	15	13	22.5	38.5
76422	VLS.55 B-M10-RC	55	M10	33	19	32	15	17	22.5	42.5

VLS-SST-p-RC

INOX STAINLESS STEEL

Code	Description	D	d	L	d1	l	l1	l2	R	⚖
76431	VLS.55-SST-p-M10x20-RC	55	M10	33	19	20	32	15	22.5	53
76435	VLS.55-SST-p-M10x40-RC	55	M10	33	19	40	32	15	22.5	63.5