

MATERIAL

High-resilience polypropylene based (PP) technopolymer, coated with thermoplastic elastomer (TPE) "soft-touch" chemically bonded, hardness 70 Shore A. The coating material is produced from FDA compliant raw material (FDA CFR.21 and EU 10/2011), black colour, matte finish.

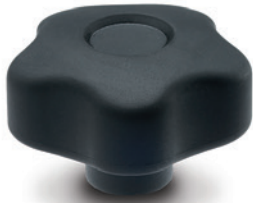
COLOURED CENTRE CAP

Polypropylene based (PP) technopolymer, in the six standard colours, matte finish.

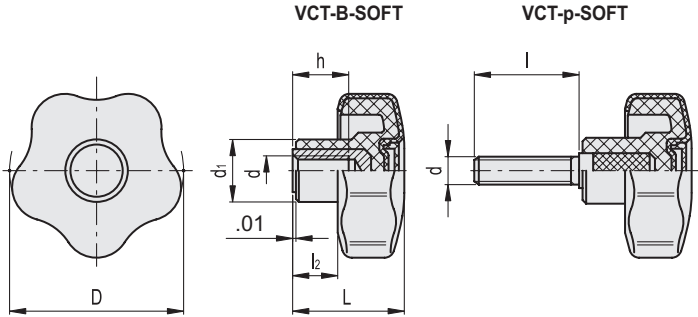
On request and for sufficient quantities, it can be supplied in other colours or with customised graphic symbols, marks or writings.

STANDARD EXECUTIONS

- **VCT-B-SOFT**: brass boss, threaded blind hole.
- **VCT-p-SOFT**: zinc-plated steel threaded stud with chamfered flat end as in ISO 4753 (see Technical data on page A-10).



ELESA Original design



* Complete with colour index, example: 9169894-C2 VCT.43 B-5/16-18-SOFT-C2

C9
RAL9005

C2
RAL2004

C3
RAL7035

C4
RAL1021

C5
RAL5024

C6
RAL3000

C17
RAL6017

VCT-B-SOFT

INCH

Code	Description	D	d2B	L	d1	l2	h	C# [ft·lb]	⚖
9169894-*	VCT.43 B-5/16-18-SOFT-*	1.69	5/16-18	1.14	0.67	0.43	0.51	15	0.04
9169954-*	VCT.53 B-3/8-16-SOFT-*	2.09	3/8-16	1.34	0.75	0.51	0.67	27	0.08

VCT-p-SOFT

INCH

Code	Description	D	d2A	L	d1	l	l2	C# [ft·lb]	⚖
9169913-*	VCT.43 p-5/16-18x1-SOFT-*	1.69	5/16-18	1.14	0.67	1.000	0.43	14	0.05
9169973-*	VCT.53 p-3/8-16x1½-SOFT-*	2.09	3/8-16	1.34	0.75	1.500	0.51	27	0.1

"Max limit Tightening torque" means the max torque value at which the metal insert, in normal conditions of use, is perfectly and strongly anchored to the plastic material.