

- 1
- 2
- 3
- 4
- 5
- 6
- 7
- 8
- 9
- 10
- 11
- 12
- 13
- 14
- 15
- 16
- 17
- 18
- 19

**BRACKET**

Glass-fibre reinforced polyamide based (PA) technopolymer, RAL 5005 blue colour, matte finish.

**BUSHINGS AND WASHERS**

AISI 304 stainless steel.

**BEARING**

High quality with traceability codes. Chrome steel.

**LUBRICATOR**

Straight type, in AISI 303 stainless steel with 1/8 gas thread.

**PACKING RINGS**

NBR rubber.

**COVER**

Glass-fibre reinforced polypropylene based (PP) technopolymer, RAL 5015 blue colour, matte finish.

Closed cap for head bracket or for pass-through shafts.

**STANDARD EXECUTIONS**

- **UCP-S-T**: head bracket with closed cover.
- **UCP-S-P**: bracket for pass-through shaft with drilled cover and NBR rubber packing ring for rotating shafts.

**FEATURES AND APPLICATIONS**

Overall dimensions are in compliance with ISO 3228.

A system of completely sealed packing rings assures the protection of the bearing from dirt ingress. The reduced contact surface of the support base allows for maximum sanitisation.

Max shaft misalignment = 2,5°.

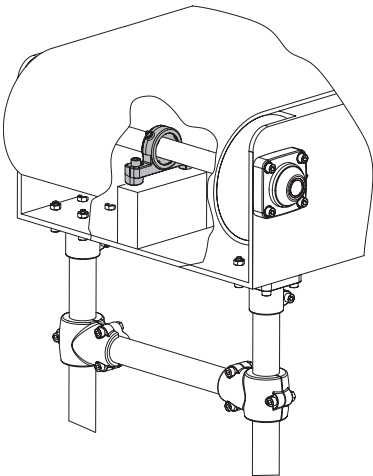
**INSTRUCTIONS OF USE**

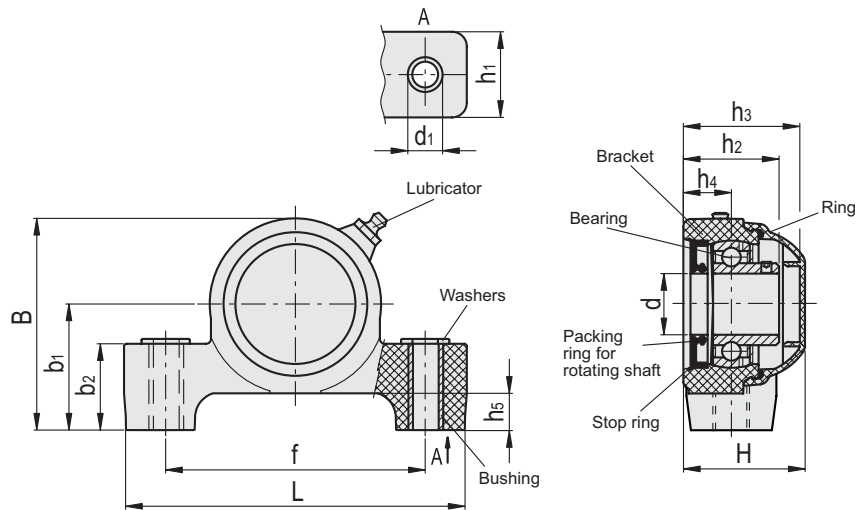
Assembly with shafts without end stops. For optimum operation, we recommend periodic lubrication with a common grease resistant to high temperatures and oxidation.

**SPECIAL EXECUTIONS ON REQUEST**

- AISI 440C stainless steel bearing.
- Bearing in inch sizes.
- Brackets for shafts with diameters in different sizes.
- Brackets in polyamide-based (PA) technopolymer, RAL 5005 blue colour, compliant with FDA standards.
- Brackets in polypropylene based (PP) technopolymer, packing rings and oil seal in VITON®\*.

\* Registered trademark by DuPont Dow Elastomers.

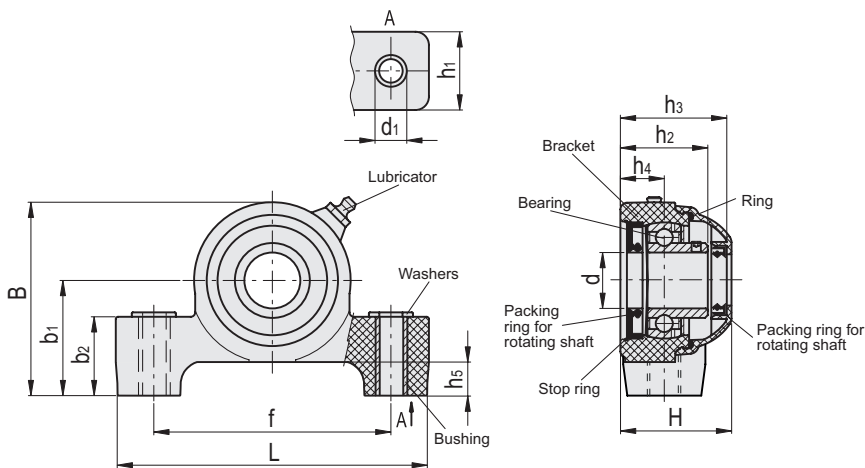




UCP-S-T

METRIC

Code	Description	d	d1	H	L	B	f	b1	b2	h1	h2	h3	h4	h5	Bearing static load [N]	Bearing dynamic load [N]	Bracket load [N]	⚖
419455	UCP.205-S-C-25-T-C55	25	10.5	51.7	141	86.5	106	51.5	34.5	35	39	49.2	19.6	15	7800	14000	6900	445
419465	UCP.206-S-C-30-T-C55	30	10.5	55.6	157	99.5	121	58	34.5	36	42.7	53.1	20.7	15	11300	19500	9200	525



UCP-S-P

METRIC

Code	Description	d	d1	H	L	B	f	b1	b2	h1	h2	h3	h4	h5	Bearing static load [N]	Bearing dynamic load [N]	Bracket load [N]	⚖
419405	UCP.205-S-C-25-P-C55	25	10.5	51.7	141	86.5	106	51.5	34.5	35	39	49.2	19.6	15	7800	14000	6900	445
419415	UCP.206-S-C-30-P-C55	30	10.5	55.6	157	99.5	121	58	34.5	36	42.7	53.1	20.7	15	11300	19500	9200	525