



1

**BRACKET**

Glass-fibre reinforced polyamide based (PA) technopolymer, RAL 5005 blue colour, matte finish.



2

**BUSHINGS AND WASHERS**

AISI 304 stainless steel.



3

**BEARING**

High quality with traceability codes. Chrome steel.



4

**LUBRICATOR**

Straight type, in nickel-plated brass with 1/8 gas thread.



5

**PACKING RINGS**

NBR rubber.



6

**COVER**

Glass-fibre reinforced polypropylene based (PP) technopolymer, RAL 5015 blue colour, matte finish.

Closed cap for head bracket or for pass-through shafts.



7

**STANDARD EXECUTIONS**

- **UCFB-S-T**: head bracket with closed cover.
- **UCFB-S-P**: bracket for pass-through shaft with drilled cover and NBR rubber packing ring for rotating shafts.



8

**FEATURES AND APPLICATIONS**

Overall dimensions are in compliance with ISO 3228.

A system of completely sealed packing rings assures the protection of the bearing from dirt ingress. The part is moulded without internal lightening cavities in order to ensure that it is fully sanitisable.

Max shaft misalignment = 2,5°.



9

**INSTRUCTIONS OF USE**

Assembly with shafts without end stops. For optimum operation, we recommend periodic lubrication with a common grease resistant to high temperatures and oxidation.



10

**SPECIAL EXECUTIONS ON REQUEST**

- AISI 440C stainless steel bearing.
- Bearing in inch sizes.
- Brackets for shafts with diameters in different sizes.
- Brackets in polyamide-based (PA) technopolymer, RAL 5005 blue colour, compliant with FDA standards.
- Brackets in polypropylene based (PP) technopolymer, packing rings and oil seal in VITON®\*.

\* Registered trademark by DuPont Dow Elastomers.



11



12



13



14



15



16



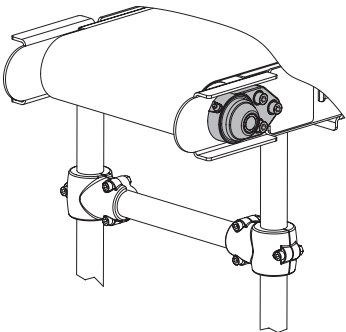
17

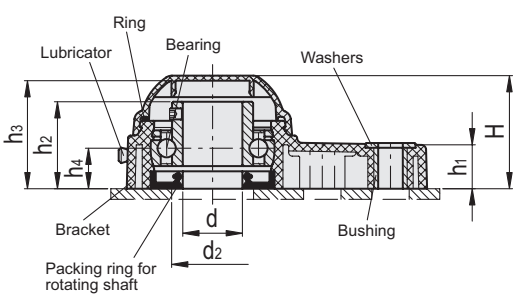
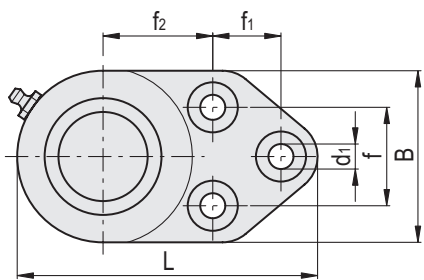


18



19

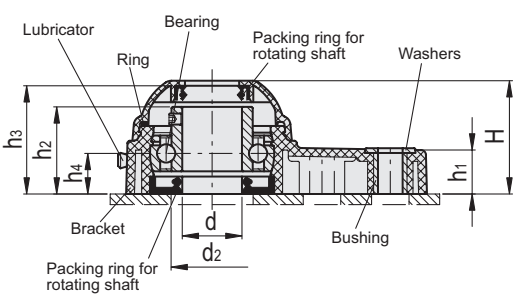
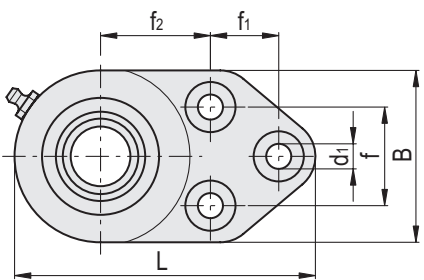




UCFB-S-T

METRIC

Code	Description	d	d1	f1	d2		H	L	B	f	f2	h1	h2	h3	h4	Bearing static load [N]	Bearing dynamic load [N]	Bracket load [N]	
					min	max													
419457	UCFB.205-S-D-25-T-C55	25	10.5	28.6	45	50	49.5	126	72	41.3	46	19	36.5	47	17	7800	14000	9000	352
419467	UCFB.206-S-D-30-T-C55	30	10.5	32	50	60	55.7	142	85	47.6	52.4	26.3	41.7	53.2	20.7	11300	19500	11000	528



UCFB-S-P

METRIC

Code	Description	d	d1	f1	d2		H	L	B	f	f2	h1	h2	h3	h4	Bearing static load [N]	Bearing dynamic load [N]	Bracket load [N]	
					min	max													
419407	UCFB.205-S-D-25-P-C55	25	10.5	28.6	45	50	49.5	126	72	41.3	46	19	36.5	47	17	7800	14000	9000	352
419417	UCFB.206-S-D-30-P-C55	30	10.5	32	50	60	55.7	142	85	47.6	52.4	26.3	41.7	53.2	20.7	11300	19500	11000	528