



- 1
- 2
- 3
- 4
- 5
- 6
- 7
- 8
- 9
- 10
- 11
- 12
- 13
- 14
- 15
- 16
- 17
- 18
- 19

**COVER**

Polyamide based (PA) technopolymer, RAL 2004 orange, semi-matte finish, valve symbol.

**FITTING**

Polyamide based (PA) technopolymer, black colour, semi-matte finish.

**PACKING RINGS**

Two NBR synthetic rubber O-rings.

**SEALING DISK**

Technopolymer with NBR synthetic rubber O-ring.

**SPRING**

Stainless steel.

**FLAT DIPSTICK**

Flat section phosphatised steel.

On request and for sufficient quantities dipstick can be supplied in different lengths and/or complete with MAX-MIN level lines.

**STANDARD EXECUTIONS**

- **TP-SV-10mb+a:** valve (sealing disk) opens when pressure exceeds 0.010 bar (set at 10 mb).
- **TP-SV-100mb+a:** valve (sealing disk) opens when pressure exceeds 0.100 bar (set at 100 mb).

**MAXIMUM CONTINUOUS WORKING TEMPERATURE**

80°C.

**FEATURES AND APPLICATIONS**

Push-fit avoids the need to screw/unscrew, allowing for quick installation. See Fig.1 for the dimensions of the assembly hole. Chamfer hole 1x45° the outside surface to make assembly easier.

TP-SV+a valve breather caps are particularly suitable for all those applications (speed reducers, variators or compressors) when the internal air pressure must not exceed a certain value (10 or 100 mb).

In these cases, the safety valve of the cap allows the expulsion of the exceeding air in the reservoir, thus re-establishing the pressure values for which the valve is set.

Sealing disc (closed in normal pressure conditions) prevents dust from getting in and oil-losses.

The product is designed to vent slight overpressures; the pressure inside the tank must not exceed 200 mb, under optimum conditions of cleanliness of the assembly hole and at room temperature.

**TECHNICAL DATA**

Air flow rate for each model can be determined from the graph calculating the difference between the pressure inside and outside the reservoir.



ELESA Original design

**Operating layout**

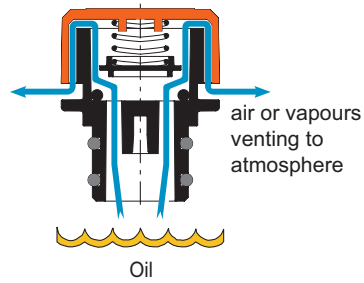
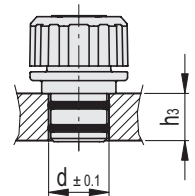
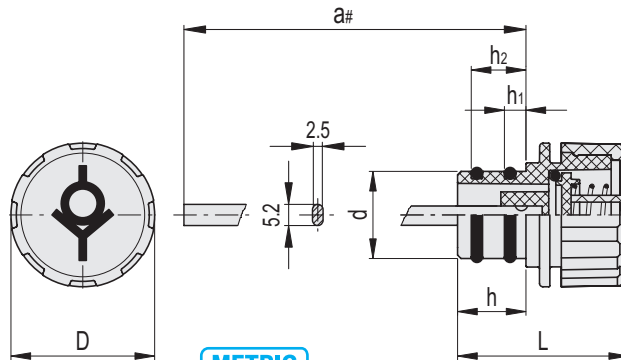


Fig.1

Description	d ± 0.1	h3 min
TP-SV.30-18	18	15
TP-SV.40-20	20	20
TP-SV.40-26	26	20
TP-SV.40-30	30	20



Conversion Table	
1 mm = 0.039 inch	
D	
mm	inch
30.5	1.19
42.5	1.66



**TP-SV-10mb+a**

Code	Description	D	d	a#	L	h	h1	h2	Δ
60351-C2	TP-SV.30-18-10mb+a-C2	30.5	18	194	39.5	15	4.5	12	33
60361-C2	TP-SV.40-20-10mb+a-C2	42.5	20	196	48.5	20	6.5	16	46
60371-C2	TP-SV.40-26-10mb+a-C2	42.5	26	196	48.5	20	6.5	16	48
60381-C2	TP-SV.40-30-10mb+a-C2	42.5	30	196	48.5	20	6.5	16	49

**TP-SV-100mb+a**

Code	Description	D	d	a#	L	h	h1	h2	Δ
60356-C2	TP-SV.30-18-100mb+a-C2	30.5	18	194	39.5	15	4.5	12	33
60366-C2	TP-SV.40-20-100mb+a-C2	42.5	20	196	48.5	20	6.5	16	48
60376-C2	TP-SV.40-26-100mb+a-C2	42.5	26	196	48.5	20	6.5	16	49
60386-C2	TP-SV.40-30-100mb+a-C2	42.5	30	196	48.5	20	6.5	16	50

# You can choose lengths other than the standard option and/or add MAX-MIN level markings. To request customization, select an item and follow the wizard on the web.