

- 1
- 2
- 3
- 4
- 5
- 6
- 7
- 8
- 9
- 10
- 11
- 12
- 13
- 14
- 15
- 16
- 17
- 18
- 19

CLAMP AND BASE

Glass-fibre reinforced polyamide based (PA) technopolymer, RAL 9005 (C9) black colour or grey RAL 7040 (C33) colour, resistant to UV rays, matte finish.

SCREWS AND NUTS (SUPPLIED)

Cylindrical-head screw with hexagon socket in AISI 304 stainless steel with anti-seizure treatment.
Self-locking nuts in AISI 304 stainless steel.

STANDARD EXECUTIONS

- TCC-TP-PBF-T: with teeth.
- TCC-TP-PBF-S: without teeth.

FEATURES

The joints composed of clamps with external teeth of 18 mm diameter have 24 teeth and an adjustment angle of 15°, while those of 30 mm diameter have 36 teeth and an adjustment angle of 10°. Joints comprising bases and clamps without teeth can be positioned at any angle.
Clamps for tubes with a diameter of 18 ± 0.2 and 30 ± 0.2 mm. For smaller diameter tubes, the hole reduction sleeve can be used TCC-A (to be ordered separately).
The "s" grub screws may be replaced by the kit TCC-KS.

TECHNICAL DATA

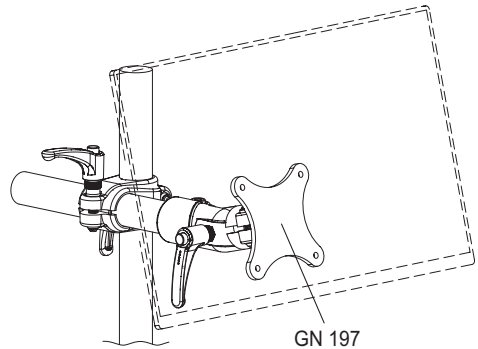
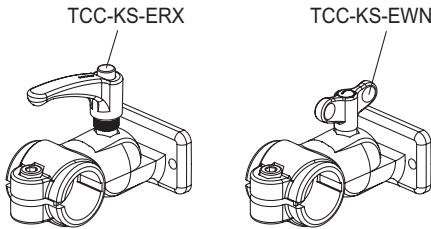
The resistance values shown in the table were measured during laboratory tests at ambient temperature with the screws tightened to the suggested torque "C#".

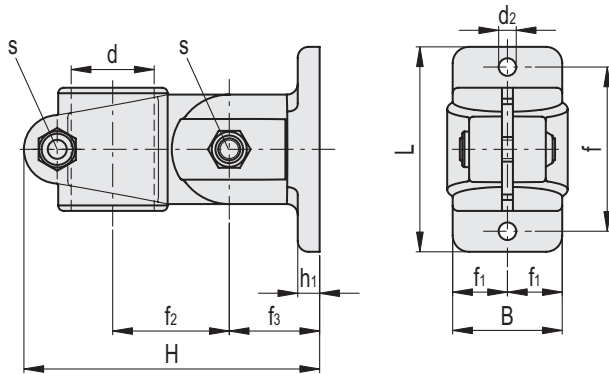
ACCESSORIES ON REQUEST (TO BE ORDERED SEPARATELY)

- TCC-A (see page -): reduction sleeves.
- TCC-KS (see page -): clamping kit.
- GN 197 (see page -): monitor mounts.
- TCC-KV (see page -): screws and clamping nuts.
- GN 990 (see page -): connecting tubes.



ELESA Original design





Conversion Table	
1 mm = 0.039 inch	
d	
mm	inch
18	0.70
30	1.17

C9 RAL9005
 C33 RAL7040

TCC-TP-PBF-T

INOX STAINLESS STEEL METRIC

Code	Description	d	L	B	H	d2	f±0.2	f1	f2	f3	h1	s	C#	F1*	M1**	M2***	⚖️
													[Nm]	[N]	[Nm]	[Nm]	
600751-C9	TCC-TP-PBF-18-T-C9	18	54	26.5	70.5	5.5	40	13	28.5	20	5	M6	5	1100	11	32	52
600751-C33	TCC-TP-PBF-18-T-C33	18	54	26.5	70.5	5.5	40	13	28.5	20	5	M6	5	1100	11	32	52
600851-C9	TCC-TP-PBF-30-T-C9	30	75	40	107	6.5	60	20	42	33	7.5	M8	12	3000	33	100	173
600851-C33	TCC-TP-PBF-30-T-C33	30	75	40	107	6.5	60	20	42	33	7.5	M8	12	3000	33	100	173

TCC-TP-PBF-S

INOX STAINLESS STEEL METRIC

Code	Description	d	L	B	H	d2	f±0.2	f1	f2	f3	h1	s	C#	F1*	M1**	M2***	⚖️
													[Nm]	[N]	[Nm]	[Nm]	
600752-C9	TCC-TP-PBF-18-S-C9	18	54	26.5	70.5	5.5	40	13	28.5	20	5	M6	5	1100	11	3	52
600752-C33	TCC-TP-PBF-18-S-C33	18	54	26.5	70.5	5.5	40	13	28.5	20	5	M6	5	1100	11	3	52
600852-C9	TCC-TP-PBF-30-S-C9	30	75	40	107	6.5	60	20	42	33	7.5	M8	12	3000	33	4	173
600852-C33	TCC-TP-PBF-30-S-C33	30	75	40	107	6.5	60	20	42	33	7.5	M8	12	3000	33	4	173

Suggested torque for screw assembly.
 * Resistance to tube pull out
 ** Resistance to tube rotation
 *** Resistance to joint rotation.

