

- 1
- 2
- 3
- 4
- 5
- 6
- 7
- 8
- 9
- 10
- 11
- 12
- 13
- 14
- 15
- 16
- 17
- 18
- 19

**CLAMP AND BASE**

Glass-fibre reinforced polyamide based (PA) technopolymer, RAL 9005 (C9) black colour or grey RAL 7040 (C33) colour, resistant to UV rays, matte finish.

**SCREWS AND NUTS (SUPPLIED)**

Cylindrical-head screw with hexagon socket in AISI 304 stainless steel with anti-seizure treatment.

Self-locking nuts in AISI 304 stainless steel.

**STANDARD EXECUTIONS**

- TCC-TP-PB-T: with teeth.
- TCC-TP-PB-S: without teeth.

**FEATURES**

A base with external teeth can be joined to a clamp with internal teeth, or a base without teeth to a clamp without teeth, to create a hinged joint. The joints composed of clamps with internal teeth of 18 mm diameter have 24 teeth and an adjustment angle of 15°, while those of 30 mm diameter have 36 teeth and an adjustment angle of 10°.

Joints comprising bases and clamps without teeth can be positioned at any angle.

For smaller diameter tubes, the hole reduction sleeve can be used TCC-A (to be ordered separately).

The "s" grub screws may be replaced by the kit TCC-KS.

**TECHNICAL DATA**

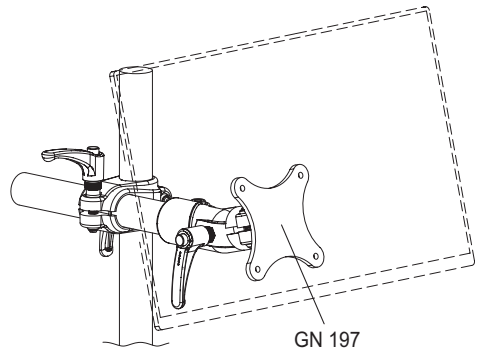
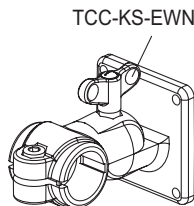
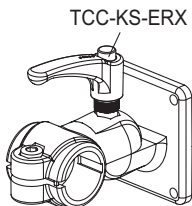
The resistance values shown in the table were measured during laboratory tests at ambient temperature with the screws tightened to the suggested torque "C#".

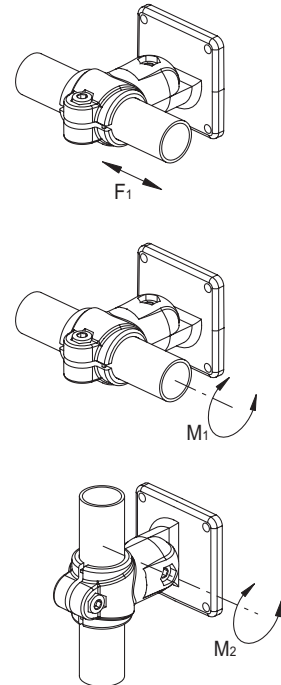
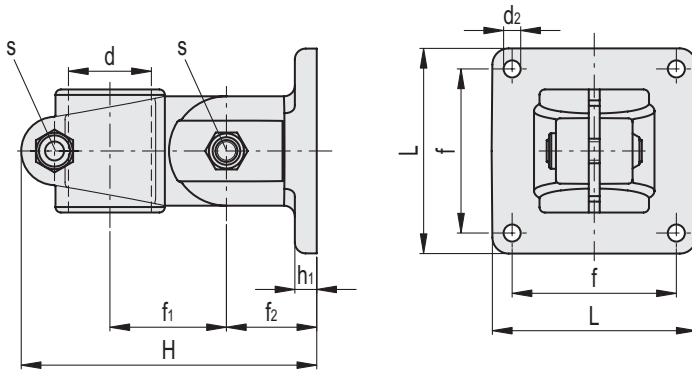
**ACCESSORIES ON REQUEST (TO BE ORDERED SEPARATELY)**

- TCC-A (see page -): reduction sleeves.
- TCC-KS (see page -): clamping kit.
- GN 197 (see page -): monitor mounts.
- TCC-KV (see page -): screws and clamping nuts.
- GN 990 (see page -): connecting tubes.



ELESA Original design





**Conversion Table**  
1 mm = 0.039 inch

d	
mm	inch
18	0.70
30	1.17

**C9** RAL9005    **C33** RAL7040

**TCC-TP-PB-T**

Code	Description	d	L	H	d2	f ±0.2	f1	f2	h1	s	C#	INOX STAINLESS STEEL METRIC			
												F1* [N]	M1** [Nm]	M2*** [Nm]	
600741-C9	TCC-TP-PB-18-T-C9	18	45	70.5	5.5	30	28.5	20	5	M6	5	1100	11	35	55
600741-C33	TCC-TP-PB-18-T-C33	18	45	70.5	5.5	30	28.5	20	5	M6	5	1100	11	35	55
600841-C9	TCC-TP-PB-30-T-C9	30	75	107	6.5	60	42	33	7.5	M8	12	3000	33	100	165
600841-C33	TCC-TP-PB-30-T-C33	30	75	107	6.5	60	42	33	7.5	M8	12	3000	33	100	165

**TCC-TP-PB-S**

Code	Description	d	L	H	d2	f ±0.2	f1	f2	h1	s	C#	INOX STAINLESS STEEL METRIC			
												F1* [N]	M1** [Nm]	M2*** [Nm]	
600742-C9	TCC-TP-PB-18-S-C9	18	45	70.5	5.5	30	28.5	20	5	M6	5	1100	11	3	55
600742-C33	TCC-TP-PB-18-S-C33	18	45	70.5	5.5	30	28.5	20	5	M6	5	1100	11	3	55
600842-C9	TCC-TP-PB-30-S-C9	30	75	107	6.5	60	42	33	7.5	M8	12	3000	33	4	165
600842-C33	TCC-TP-PB-30-S-C33	30	75	107	6.5	60	42	33	7.5	M8	12	3000	33	4	165

# Suggested torque for screw assembly.  
\* Resistance to tube pull out  
\*\* Resistance to tube rotation  
\*\*\* Resistance to joint rotation.

