



- 1
- 2
- 3
- 4
- 5
- 6
- 7
- 8
- 9
- 10
- 11
- 12
- 13
- 14
- 15
- 16
- 17
- 18
- 19

CLAMPS

Glass-fibre reinforced polyamide based (PA) technopolymer, RAL 9005 (C9) black colour or grey RAL 7040 (C33) colour, resistant to UV rays, matte finish.

SCREWS AND NUTS (SUPPLIED)

Cylindrical-head screw with hexagon socket in AISI 304 stainless steel with anti-seizure treatment.

Self-locking nuts in AISI 304 stainless steel.

STANDARD EXECUTIONS

- **TCC-AP-TP-T**: with teeth.
- **TCC-AP-TP-S**: without teeth.

FEATURES

The joints composed of clamps with external/internal teeth of 18 mm diameter have 24 teeth and an adjustment angle of 15°, while those of 30 mm diameter have 36 teeth and an adjustment angle of 10°.

Joints comprising clamps without teeth can be positioned at any angle. Clamps for tubes with a diameter of 18 ± 0.2 and 30 ± 0.2 mm.

For smaller diameter tubes, the hole reduction sleeve can be used TCC-A (to be ordered separately).

The "s" grub screws may be replaced by the kit TCC-KS.

TECHNICAL DATA

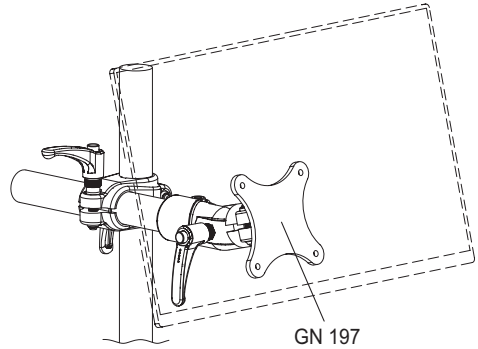
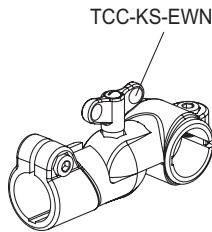
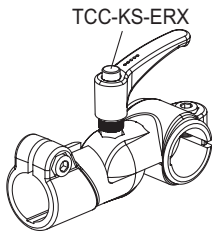
The resistance values shown in the table were measured during laboratory tests at ambient temperature with the screws tightened to the suggested torque "C#".

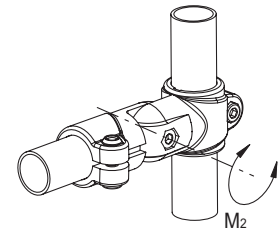
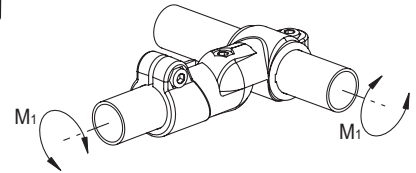
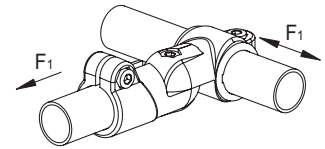
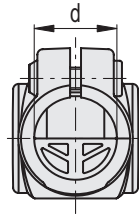
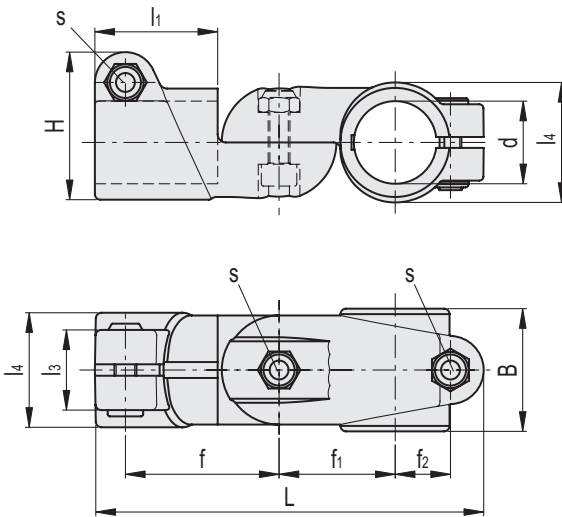
ACCESSORIES ON REQUEST (TO BE ORDERED SEPARATELY)

- TCC-A (see page -): reduction sleeves.
- TCC-KS (see page -): clamping kit.
- GN 197 (see page -): monitor mounts.
- TCC-KV (see page -): screws and clamping nuts.
- GN 990 (see page -): connecting tubes.



ELESA Original design





Conversion Table	
1 mm = 0.039 inch	
d	
mm	inch
18	0.70
30	1.17

C9 RAL9005
 C33 RAL7040

TCC-AP-TP-T

INOX STAINLESS STEEL
 METRIC

Code	Description	d	L	B	H	f	f1	f2	l1	l3	l4	s	C#	F1*	M1**	M2***	⚖️
		[mm]	[mm]	[mm]	[mm]	[mm]	[mm]	[mm]	[mm]	[mm]	[mm]	[mm]	[Nm]	[N]	[Nm]	[Nm]	[g]
600711-C9	TCC-AP-TP-18-T-C9	18	95.5	29	36	36.5	28.5	13.5	29.5	21	29	M6	5	900	8	44	67
600711-C33	TCC-AP-TP-18-T-C33	18	95.5	29	36	36.5	28.5	13.5	29.5	21	29	M6	5	900	8	44	67
600811-C9	TCC-AP-TP-30-T-C9	30	142	44.5	54	56	42	20.5	45	28	42	M8	12	3000	33	120	182
600811-C33	TCC-AP-TP-30-T-C33	30	142	44.5	54	56	42	20.5	45	28	42	M8	12	3000	33	120	182

TCC-AP-TP-S

INOX STAINLESS STEEL
 METRIC

Code	Description	d	L	B	H	f	f1	f2	l1	l3	l4	s	C#	F1*	M1**	M2***	⚖️
		[mm]	[mm]	[mm]	[mm]	[mm]	[mm]	[mm]	[mm]	[mm]	[mm]	[mm]	[Nm]	[N]	[Nm]	[Nm]	[g]
600712-C9	TCC-AP-TP-18-S-C9	18	95.5	29	36	36.5	28.5	13.5	29.5	21	29	M6	5	900	8	2	67
600712-C33	TCC-AP-TP-18-S-C33	18	95.5	29	36	36.5	28.5	13.5	29.5	21	29	M6	5	900	8	2	67
600812-C9	TCC-AP-TP-30-S-C9	30	142	44.5	54	56	42	20.5	45	28	42	M8	12	3000	33	4	182
600812-C33	TCC-AP-TP-30-S-C33	30	142	44.5	54	56	42	20.5	45	28	42	M8	12	3000	33	4	182

Suggested torque for screw assembly.
 * Resistance to tube pull out
 ** Resistance to tube rotation
 *** Resistance to joint rotation.