

- 1
- 2
- 3
- 4
- 5
- 6
- 7
- 8
- 9
- 10
- 11
- 12
- 13
- 14
- 15
- 16
- 17
- 18
- 19

CLAMP AND BASE

Glass-fibre reinforced polyamide based (PA) technopolymer, RAL 9005 (C9) black colour or grey RAL 7040 (C33) colour, resistant to UV rays, matte finish.

SCREWS AND NUTS (SUPPLIED)

Cylindrical-head screw with hexagon socket in AISI 304 stainless steel with anti-seizure treatment.
Self-locking nuts in AISI 304 stainless steel.

STANDARD EXECUTIONS

- TCC-AP-PB-T: with teeth.
- TCC-AP-PB-S: without teeth.

FEATURES

The joints composed of clamps with external teeth of 18 mm diameter have 24 teeth and an adjustment angle of 15°, while those of 30 mm diameter have 36 teeth and an adjustment angle of 10°. Joints comprising bases and clamps without teeth can be positioned at any angle.
Clamps for tubes with a diameter of 18 ± 0.2 and 30 ± 0.2 mm.
For smaller diameter tubes, the hole reduction sleeve can be used TCC-A (to be ordered separately).
The "s" grub screws may be replaced by the kit TCC-KS.

TECHNICAL DATA

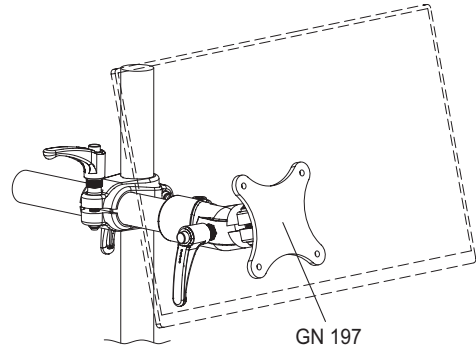
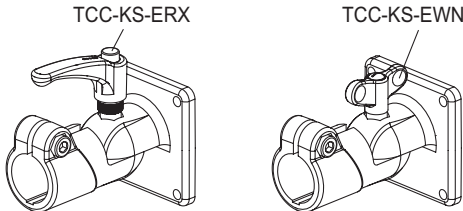
The resistance values shown in the table were measured during laboratory tests at ambient temperature with the screws tightened to the suggested torque "C#".

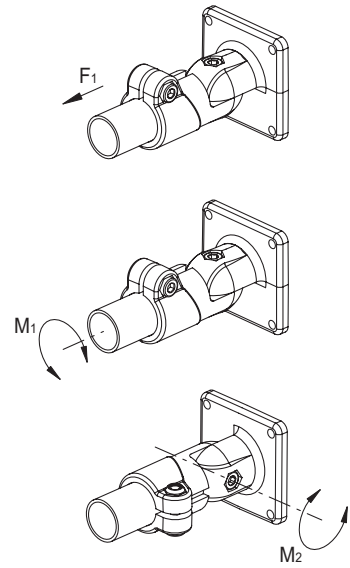
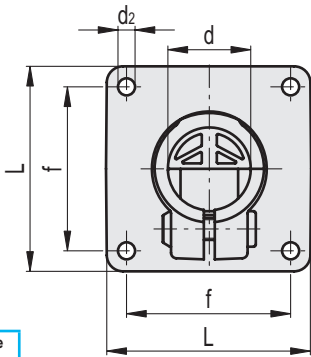
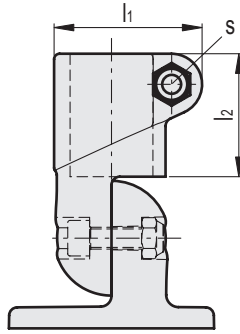
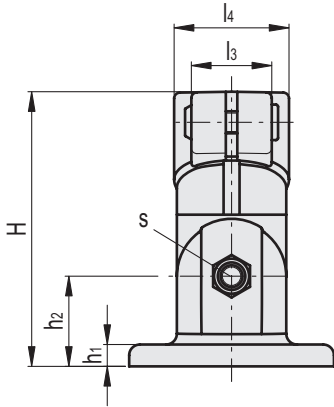
ACCESSORIES ON REQUEST (TO BE ORDERED SEPARATELY)

- TCC-A (see page -): reduction sleeves.
- TCC-KS (see page -): clamping kit.
- GN 197 (see page -): monitor mounts.
- TCC-KV (see page -): screws and clamping nuts.
- GN 990 (see page -): connecting tubes.



ELESA Original design





Conversion Table	
1 mm = 0.039 inch	
d	
mm	inch
18	0.70
30	1.17

C9 C33
 RAL9005 RAL7040

TCC-AP-PB-T

INOX STAINLESS STEEL METRIC

Code	Description	d	L	H	d2	f±0.2	h1	h2	l1	l2	l3	l4	s	C#	F1* [Nm]	M1** [N]	M2*** [Nm]	⚖️
600721-C9	TCC-AP-PB-18-T-C9	18	45	65	5.5	30	5	20	36	29.5	21	29	M6	5	900	8	35	54
600721-C33	TCC-AP-PB-18-T-C33	18	45	65	5.5	30	5	20	36	29.5	21	29	M6	5	900	8	35	54
600821-C9	TCC-AP-PB-30-T-C9	30	75	100	6.5	60	7.5	32.5	54	45	28	42	M8	12	3300	33	100	161
600821-C33	TCC-AP-PB-30-T-C33	30	75	100	6.5	60	7.5	32.5	54	45	28	42	M8	12	3300	33	100	161

TCC-AP-PB-S

INOX STAINLESS STEEL METRIC

Code	Description	d	L	H	d2	f±0.2	h1	h2	l1	l2	l3	l4	s	C#	F1* [Nm]	M1** [N]	M2*** [Nm]	⚖️
600722-C9	TCC-AP-PB-18-S-C9	18	45	65	5.5	30	5	20	36	29.5	21	29	M6	5	900	8	2	54
600722-C33	TCC-AP-PB-18-S-C33	18	45	65	5.5	30	5	20	36	29.5	21	29	M6	5	900	8	2	54
600822-C9	TCC-AP-PB-30-S-C9	30	75	100	6.5	60	7.5	32.5	54	45	28	42	M8	12	3300	33	6	161
600822-C33	TCC-AP-PB-30-S-C33	30	75	100	6.5	60	7.5	32.5	54	45	28	42	M8	12	3300	33	6	161

Suggested torque for screw assembly.
 * Resistance to tube pull out
 ** Resistance to tube rotation
 *** Resistance to joint rotation.

