

MATERIAL

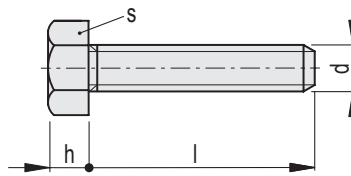
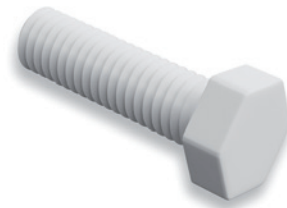
Polyamide based (PA) technopolymer, natural colour.

FEATURES AND APPLICATIONS

The screw is similar in shape and size to that specified in DIN 933 or ISO 4017.

It is made entirely from insulating material that is resistant to corrosion and chemicals. It is suitable for applications in industry, aeronautics and electronics, and in all cases where weight reduction is required.

The product is tested for mechanical and dimensional performance. Slight colour variations are perfectly normal and do not affect the quality of the product.



METRIC

Code	Description	d	l	s	h	Maximum tightening torque [Nm]	⚖️
505101	SRD.933-M4X10-TP-N	M4	10	7	3	0.15	1
505102	SRD.933-M4X16-TP-N	M4	16	7	3	0.15	1
505103	SRD.933-M4X20-TP-N	M4	20	7	3	0.15	1
505104	SRD.933-M4X25-TP-N	M4	25	7	3	0.15	1
505111	SRD.933-M5X16-TP-N	M5	16	8	3.5	0.25	1
505112	SRD.933-M5X20-TP-N	M5	20	8	3.5	0.25	1.5
505113	SRD.933-M5X25-TP-N	M5	25	8	3.5	0.25	1.5
505114	SRD.933-M5X30-TP-N	M5	30	8	3.5	0.25	2
505115	SRD.933-M5X40-TP-N	M5	40	8	3.5	0.25	2.5
505116	SRD.933-M5X50-TP-N	M5	50	8	3.5	0.25	1
505121	SRD.933-M6X16-TP-N	M6	16	10	4	0.5	1.5
505122	SRD.933-M6X20-TP-N	M6	20	10	4	0.5	1.5
505123	SRD.933-M6X25-TP-N	M6	25	10	4	0.5	2
505124	SRD.933-M6X30-TP-N	M6	30	10	4	0.5	2
505125	SRD.933-M6X40-TP-N	M6	40	10	4	0.5	3
505126	SRD.933-M6X50-TP-N	M6	50	10	4	0.5	3.5
505131	SRD.933-M8X20-TP-N	M8	20	13	8	1.9	2
505132	SRD.933-M8X25-TP-N	M8	25	13	8	1.9	2
505133	SRD.933-M8X30-TP-N	M8	30	13	8	1.9	2.5
505134	SRD.933-M8X40-TP-N	M8	40	13	8	1.9	3
505135	SRD.933-M8X50-TP-N	M8	50	13	8	1.9	3.5
505141	SRD.933-M10X20-TP-N	M10	20	17	6.5	3	3
505142	SRD.933-M10X25-TP-N	M10	25	17	6.5	3	4
505143	SRD.933-M10X30-TP-N	M10	30	17	6.5	3	4.5
505144	SRD.933-M10X40-TP-N	M10	40	17	6.5	3	4.5
505145	SRD.933-M10X50-TP-N	M10	50	17	6.5	3	5
505146	SRD.933-M10X60-TP-N	M10	60	17	6.5	3	8
505151	SRD.933-M12X20-TP-N	M12	20	19	7.5	4.7	4
505152	SRD.933-M12X30-TP-N	M12	30	19	7.5	4.7	8
505153	SRD.933-M12X40-TP-N	M12	40	19	7.5	4.7	6
505154	SRD.933-M12X50-TP-N	M12	50	19	7.5	4.7	7
505155	SRD.933-M12X60-TP-N	M12	60	19	7.5	4.7	8
505156	SRD.933-M12X80-TP-N	M12	80	19	7.5	4.7	8.5
505161	SRD.933-M16X20-TP-N	M16	20	24	10	9.5	9
505162	SRD.933-M16X30-TP-N	M16	30	24	10	9.5	11
505163	SRD.933-M16X40-TP-N	M16	40	24	10	9.5	16
505164	SRD.933-M16X50-TP-N	M16	50	24	10	9.5	19
505165	SRD.933-M16X60-TP-N	M16	60	24	10	9.5	22
505166	SRD.933-M16X80-TP-N	M16	80	24	10	9.5	28
505167	SRD.933-M16X100-TP-N	M16	100	24	10	9.5	34

Standard machine parts