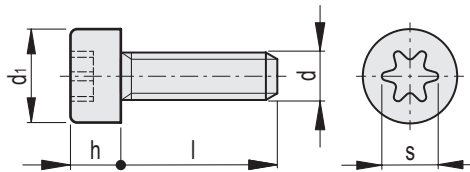
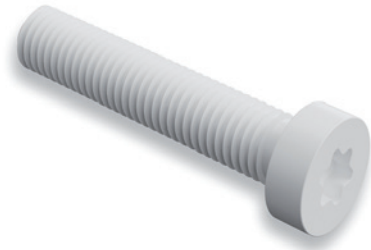


MATERIAL

Polyamide based (PA) technopolymer, natural colour.

FEATURES AND APPLICATIONS

The screw is similar in shape and size to that specified in DIN 34813. The Torx socket prevents the tool bit from slipping, avoiding the risk of damaging the screw during tightening and loosening. It is made entirely from insulating material that is resistant to corrosion and chemicals. It is suitable for applications in industry, aeronautics and electronics, and in all cases where weight reduction is required. The product is tested for mechanical and dimensional performance. Slight colour variations are perfectly normal and do not affect the quality of the product.



METRIC

Code	Description	d	d1	l	s	h	Maximum tightening torque [Nm]	⚖️
504401	SRD.34813-M4X10-TP-N-TX	M4	7	10	15	2.5	0.15	1
504402	SRD.34813-M4X16-TP-N-TX	M4	7	16	15	2.5	0.15	1
504403	SRD.34813-M4X20-TP-N-TX	M4	7	20	15	2.5	0.15	1
504404	SRD.34813-M4X25-TP-N-TX	M4	7	25	15	2.5	0.15	1
504411	SRD.34813-M5X16-TP-N-TX	M5	8.5	16	20	3.5	0.25	1
504412	SRD.34813-M5X20-TP-N-TX	M5	8.5	20	20	3.5	0.25	1
504413	SRD.34813-M5X25-TP-N-TX	M5	8.5	25	20	3.5	0.25	1.5
504414	SRD.34813-M5X30-TP-N-TX	M5	8.5	30	20	3.5	0.25	1.5
504415	SRD.34813-M5X40-TP-N-TX	M5	8.5	40	20	3.5	0.25	2
504416	SRD.34813-M5X50-TP-N-TX	M5	8.5	50	20	3.5	0.25	2.5
504421	SRD.34813-M6X16-TP-N-TX	M6	10	16	25	4	0.5	1
504422	SRD.34813-M6X20-TP-N-TX	M6	10	20	25	4	0.5	1.5
504423	SRD.34813-M6X25-TP-N-TX	M6	10	25	25	4	0.5	1.5
504424	SRD.34813-M6X30-TP-N-TX	M6	10	30	25	4	0.5	2
504425	SRD.34813-M6X40-TP-N-TX	M6	10	40	25	4	0.5	2.5
504426	SRD.34813-M6X50-TP-N-TX	M6	10	50	25	4	0.5	3
504431	SRD.34813-M8X20-TP-N-TX	M8	13	20	30	5	1.9	2
504432	SRD.34813-M8X25-TP-N-TX	M8	13	25	30	5	1.9	2.5
504433	SRD.34813-M8X30-TP-N-TX	M8	13	30	30	5	1.9	3
504434	SRD.34813-M8X40-TP-N-TX	M8	13	40	30	5	1.9	2.5
504435	SRD.34813-M8X50-TP-N-TX	M8	13	50	30	5	1.9	4.5