

- 1
- 2
- 3
- 4
- 5
- 6
- 8
- 12
- 16

**MATERIAL**

- Cover: steel sheet, with chrome plating superficial treatment.
- Flange: zinc-plated steel sheet.
- Threaded connector: zinc-plated steel.

**PACKING RING**

NBR synthetic rubber flat washer.

**OVERPRESSURE VALVE**

Technopolymer with NBR synthetic rubber O-ring and stainless steel spring.  
Set at around 0.350 bar (on request 0.700 bar).

**SUCTION VALVE**

Technopolymer sealing disk with NBR synthetic rubber O-ring and stainless steel spring.  
Set at around 0.030 bar.

**RING-SHAPED AIR FILTER**

Tech-foam 10 µ or 40 µ.

**STANDARD EXECUTIONS**

- **SMW-F10**: mesh size 10 µ.
- **SMW-F40**: mesh size 40 µ.

**MAXIMUM CONTINUOUS WORKING TEMPERATURE**

100°C.

**FEATURES AND APPLICATIONS**

Double-valve breather cap SMW. creates a pressure plenum chamber right above the oil level within given limit conditions in order to avoid any reservoir deformation.

Advantages:

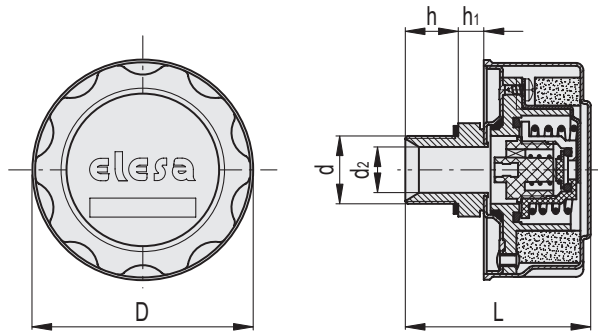
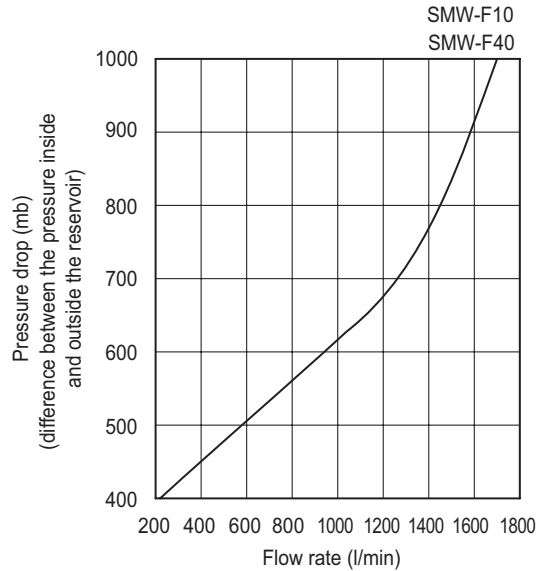
- it reduces reservoir air volume intake keeping clean fluid and filter;
- it improves suction pump action under working conditions reducing cavitation phenomenon;
- **\*\*translation\_not\_found\*\***
- it reduces foam in fluid.

**TECHNICAL DATA**

Air flow rate for the different executions of breather caps can be obtained from the diagram on the basis of the difference of air pressure inside and outside the reservoir.

**SPECIAL EXECUTIONS ON REQUEST**

With dipstick for fluid level indication.



Conversion Table	
1 mm = 0.039 inch	
D	
mm	inch
81	3.16

**SMW-F10**

Code	Description	D	d	L	d2	h	h1	⚖
156982	SMW.80-3/4-F10-350mb	81	G 3/4	69	17	16	11	340

**SMW-F40**

Code	Description	D	d	L	d2	h	h1	⚖
156983	SMW.80-3/4-F40-350mb	81	G 3/4	69	17	16	11	341