

MATERIAL

- Cover: steel sheet, with chrome plating superficial treatment.
- Flange: zinc-plated steel sheet.
- Threaded connector: zinc-plated steel.

OVERPRESSURE VALVE

Technopolymer with NBR synthetic rubber O-ring and stainless steel spring.
Set at around 0.350 bar (0.700 bar on request).

SUCTION VALVE

Technopolymer sealing disk with NBR synthetic rubber O-ring and stainless steel spring.
Set at around 0.030 bar.

RING SHAPE AIR FILTER

Tech-foam 10 µ or 40 µ.

STANDARD EXECUTIONS

- **SMW-F10 (inch)**: air filtration 10 µ.
- **SMW-F40 (inch)**: air filtration 40 µ.

MAXIMUM CONTINUOUS WORKING TEMPERATURE

212°F (100°C).

FEATURES AND APPLICATIONS

Double-valve breather cap SMW. creates a pressure plenum chamber right above the oil level within given limit conditions in order to avoid any reservoir deformation.

Advantages:

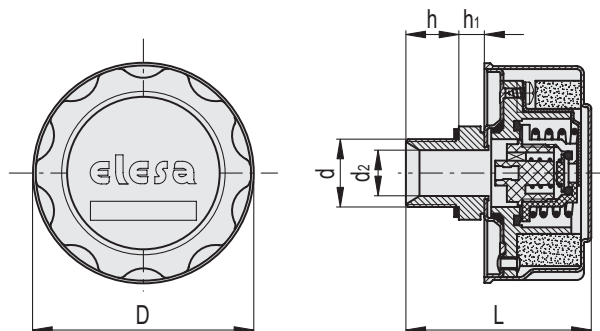
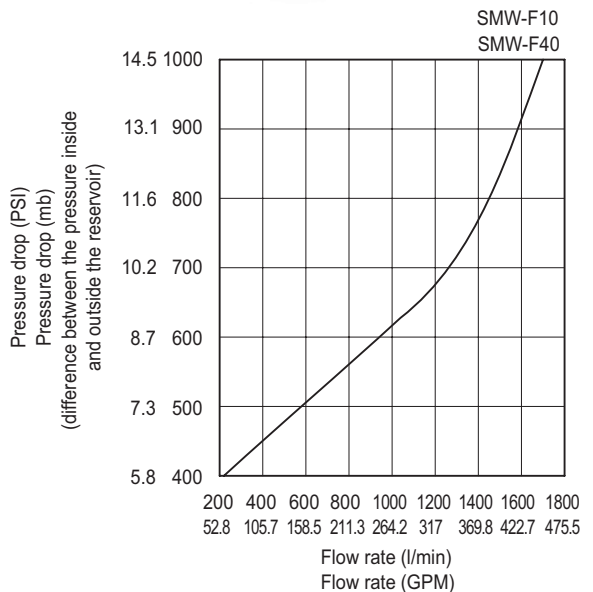
- it reduces reservoir air volume intake keeping clean fluid and filter;
- it improves suction pump action under working conditions reducing cavitation phenomenon;
- it prevents fluid leakage when the system is part of a mobile unit;
- it reduces foam in fluid.

TECHNICAL DATA

Air flow rate for the different executions of breather caps can be obtained from the diagram on the basis of the difference of air pressure inside and outside the reservoir.

SPECIAL EXECUTIONS ON REQUEST

With dipstick for fluid level indication.



NPT

SMW-F10 (inch)

Code	Description	D	d	L	d2	h	h1	△△
956982	SMW.80-3/4 NPT-F10-350mb	3.19	3/4 NPT	2.91	0.67	0.63	0.47	0.53

SMW-F40 (inch)

Code	Description	D	d	L	d2	h	h1	△△
956983	SMW.80-3/4 NPT-F40-350mb	3.19	3/4 NPT	2.91	0.67	0.63	0.47	0.53