



1

MATERIAL

Polyamide based (PA) technopolymer.

- Cover: RAL 2004 orange, semi-matte finish, with graphic symbol "valve".
- Threaded fitting with splash guard: black, semi-matte finish.



2



3

PACKING RING

NBR synthetic rubber.



4

OVERPRESSURE VALVE

Technopolymer with NBR synthetic rubber O-ring and stainless steel spring.

Set at around 0.350 bar.



5

SUCTION VALVE

Technopolymer sealing disk in NBR synthetic rubber and stainless steel spring.

Set at around 0.030 bar.



6

AIR FILTER

Thermal-bonded polyester (TBP) filter with low pressure drop and high dust holding capacity. Expected filtration class ISO 16890-1 ISO Rating coarse 75%, EN 779:2012 Class G4, air filtration 10 µ.



7

FLAT DIPSTICK

Flat section phosphatised steel.

On request and for sufficient quantities dipstick can be supplied in different lengths and/or complete with MAX-MIN level lines.



8

MAXIMUM CONTINUOUS WORKING TEMPERATURE

100°C.



9

FEATURES

The SFW-P+a cap maintains a reservoir of air under pressure above the oil level within the limits established in the design stage to avoid deformation of the tank walls. Benefits:

- reduces reservoir air volume intake keeping clean oil and filter;
- it improves suction pump action under working conditions reducing cavitation phenomenon;
- prevents fluid leakage when the system is part of a mobile unit;
- it reduces foam in fluid.

SFW-P+a caps are made with a special internal geometry which stops the leakage of the fluid to the outside.



10

TECHNICAL DATA

Air flow rate for the different executions of breather caps can be obtained from the diagram on the basis of the difference of air pressure inside and outside the reservoir.



11

SPECIAL EXECUTIONS ON REQUEST

- Black colour cover.
- Overpressure valve set at 0.700 bar.
- Threaded connector also with NPT thread (National Taper Pipe Thread - ANSI-ASME B1-20, (SFW.70-3/4-NPT).



12

13

14

15

16

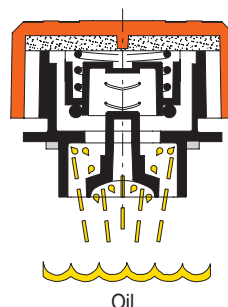
17

18

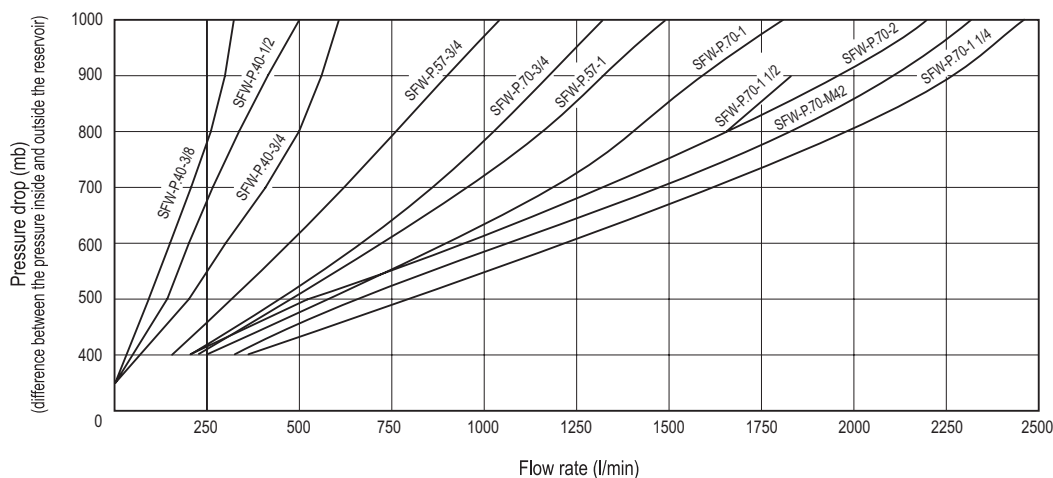
19



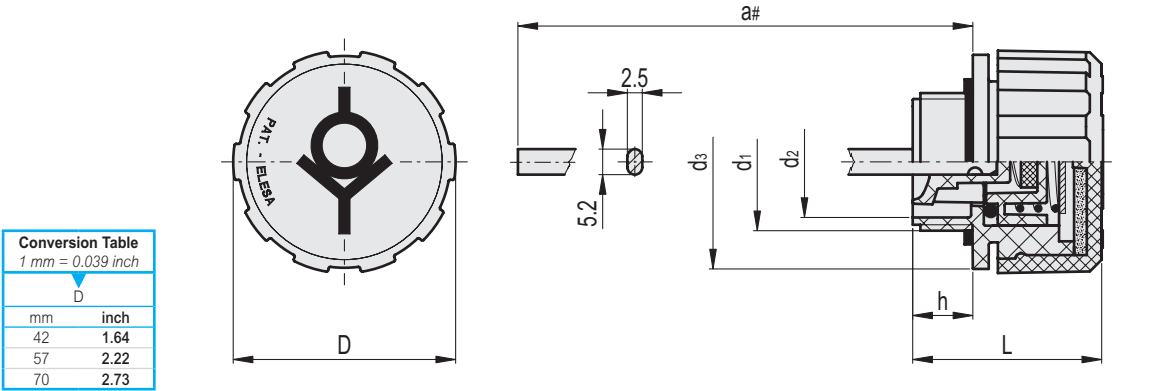
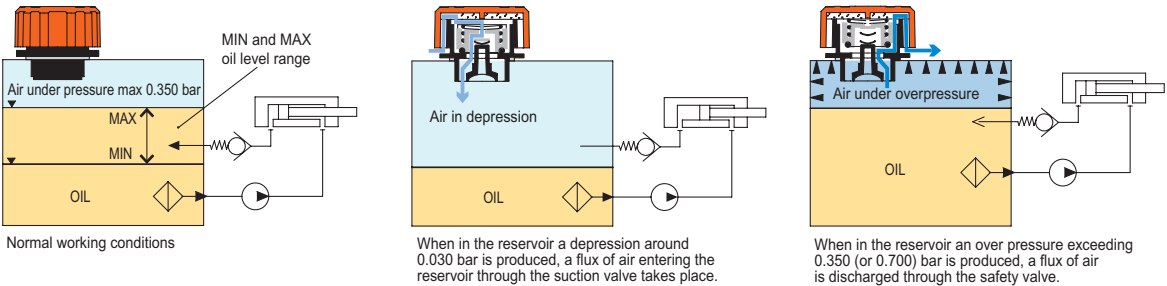
ELESA Original design



Oil



SFW-P pressurised breather cap functioning in a hydraulic circuit



Code	Description	D	a#	L	d1	d2	d3	h	Δ
54766	SFW-P.40-M16x1.5+FPE+a-350MB	42	194	36	M16x1.5	11.5	40.5	11.5	50
54768	SFW-P.40-M20x1.5+FPE+a-350MB	42	194	36	M20x1.5	15	40.5	11.5	52
54772	SFW-P.40-G3/8+FPE+a-350mb	42	194	36	G 3/8	13	40.5	11.5	50
54775	SFW-P.40-G1/2+FPE+a-350mb	42	194	36	G 1/2	15	40.5	11.5	52
54778	SFW-P.40-G3/4+FPE+a-350mb	42	194	36	G 3/4	21	40.5	11.5	51.5
54786	SFW-P.57-G3/4+FPE+a-350mb	57	190	47.5	G 3/4	19	56	13	81
54788	SFW-P.57-G1+FPE+a-350mb	57	190	47.5	G 1	26.5	56	13	82
54790	SFW-P.70-M42x2-FPE+a-350mb	70	191	59	M42x2	33.5	68.5	17	116
54792	SFW-P.70-G3/4-FPE+a-350mb	70	190	59	G 3/4	20.5	68.5	17	110
54794	SFW-P.70-G1-FPE+a-350mb	70	191	59	G 1	26.5	68.5	17	110
54796	SFW-P.70-G1.1/4-FPE+a-350Mb	70	191	59	G 1.1/4	33.5	68.5	17	116
54798	SFW-P.70-G1.1/2-FPE+a-350Mb	70	191	59	G 1.1/2	40.5	68.5	17	114
54800	SFW-P.70-G2-FPE+a-350Mb	70	191	59	G 2	51	68.5	17	120

You can choose lengths other than the standard option and/or add MAX-MIN level markings. To request customization, select an item and follow the wizard on the web.

1

2

3

4

5

6

7

8

9

10

11

12

13

14

15

16

17

18

19

Accessories for hydraulic systems