

- 1
- 2
- 3
- 4
- 5
- 6
- 7
- 8
- 9
- 10
- 11
- 12
- 13
- 14
- 15
- 16
- 17
- 18
- 19

**MATERIAL**

Zinc-plated steel threaded insert.

**NO-SLIP COATING**

Thermoplastic elastomer (TPE), hardness 80 shore A.

**STANDARD EXECUTION**

Neodymium-iron-boron (NdFeB) magnet, for temperatures up to 80°C (60°C for RMS-43x31).

With threaded insert:

- **RMS-ND-1-BK**: with no-slip coating in RAL 9011 black colour.
- **RMS-ND-1-WT**: with no-slip coating in RAL 9016 white colour.

With recessed threaded insert:

- **RMS-ND-1-1-BK**: with no-slip coating in RAL 9011 black colour.
- **RMS-ND-1-1-WT**: with no-slip coating in RAL 9016 white colour.

With two threaded inserts:

- **RMS-ND-2-BK**: with no-slip coating in RAL 9011 black colour.
- **RMS-ND-2-WT**: with no-slip coating in RAL 9016 white colour.

With two recessed threaded inserts:

- **RMS-ND-1-2-BK**: with no-slip coating in RAL 9011 black colour.
- **RMS-ND-1-2-WT**: with no-slip coating in RAL 9016 white colour.

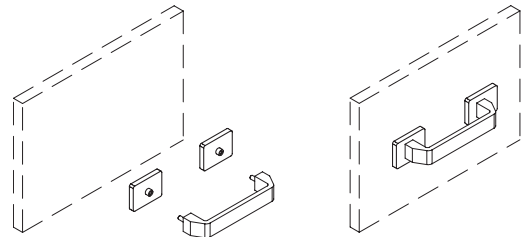
Retaining magnets technical data (on page 1052).

**FEATURES AND APPLICATIONS**

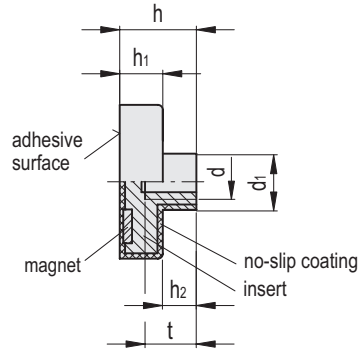
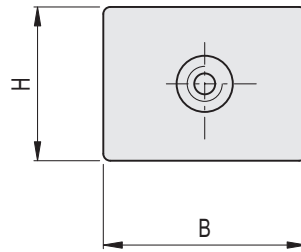
RMS flat rectangular retaining magnets are shielded magnetic systems with high performances and moderate overall dimensions.

The configuration with recessed bushing (RMS-ND-I) allows for fixing without visible protrusions, also improving the aesthetic result.

The elastomer surface increases the friction coefficient when lateral retaining forces are present, giving a better adhesion. These magnets are preferably used for sensitive surfaces.



Conversion Table 1 mm = 0.039 inch	
B	
mm	inch
35	1.37
43	1.68
55	2.15
59	2.30
74	2.89
75	2.93
110	4.29



**RMS-ND-1-BK**

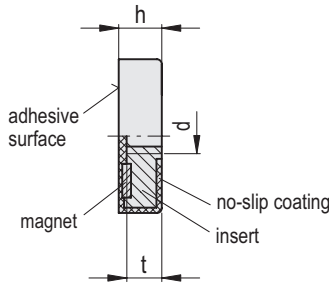
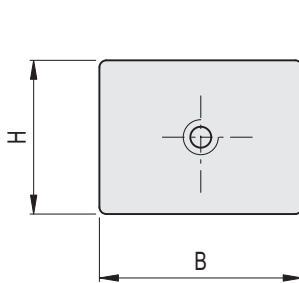
Code	Description	B	d	H	h ±0.2	h1 ±0.2	h2	d1	t	Nominal adhesive forces* [N]	⚖️
502947	RMS-ND-35x22,5-1-BK	35 ±0.2	M4	22.5 ±0.2	11	6	5	8	6	93	22
502964	RMS-ND-43x31-1-BK	43 ±0.3	M4	31 ±0.2	7	6	1	10	4.5	105	28
502952	RMS-ND-55x22,5-1-BK	55 ±0.2	M4	22.5 ±0.2	11	6	5	8	6	140	32
502981	RMS-ND-59x45-1-BK	59 ±0.3	M5	45 ±0.3	14.7	8.5	6.2	10	9	240	85
502985	RMS-ND-74x45-1-BK	74 ±0.3	M5	45 ±0.3	14.7	8.5	6.2	10	9	360	108
502956	RMS-ND-75x22,5-1-BK	75 ±0.3	M4	22.5 ±0.2	11	6	5	8	6	205	47
502989	RMS-ND-110x45-1-BK	110 ±0.3	M6	45 ±0.3	14.7	8.5	6.2	10	9	530	156

**METRIC**

**RMS-ND-1-WT**

Code	Description	B	d	H	h ±0.2	h1 ±0.2	h2	d1	t	Nominal adhesive forces* [N]	⚖️
502948	RMS-ND-35x22,5-1-WT	35 ±0.2	M4	22.5 ±0.2	11	6	5	8	6	93	22
502965	RMS-ND-43x31-1-WT	43 ±0.3	M4	31 ±0.2	7	6	1	10	4.5	105	28
502953	RMS-ND-55x22,5-1-WT	55 ±0.2	M4	22.5 ±0.2	11	6	5	8	6	140	32
502982	RMS-ND-59x45-1-WT	59 ±0.3	M5	45 ±0.3	14.7	8.5	6.2	10	9	240	85
502986	RMS-ND-74x45-1-WT	74 ±0.3	M5	45 ±0.3	14.7	8.5	6.2	10	9	360	108
502957	RMS-ND-75x22,5-1-WT	75 ±0.3	M4	22.5 ±0.2	11	6	5	8	6	205	46
502990	RMS-ND-110x45-1-WT	110 ±0.3	M6	45 ±0.3	14.7	8.5	6.2	10	9	530	156

\* The values of the nominal adhesive forces are approximate and refer to magnetic properties observed on laboratory samples.



**RMS-ND-I-1-BK**

Code	Description	B	d	H	h ±0.2	t	Nominal adhesive forces* [N]	⚖️
502771	RMS-ND-I-35x22,5-1-BK	35 ±0.2	M4	22.5 ±0.2	6	4	75	18
502775	RMS-ND-I-55x22,5-1-BK	55 ±0.2	M4	22.5 ±0.2	6	4	120	29
502783	RMS-ND-I-59x45-1-BK	59 ±0.3	M5	45 ±0.3	8.5	4.5	240	80
502787	RMS-ND-I-74x45-1-BK	74 ±0.3	M6	45 ±0.3	8.5	4.5	360	102
502779	RMS-ND-I-75x22,5-1-BK	75 ±0.3	M4	22.5 ±0.2	6	4	195	41
502791	RMS-ND-I-110x45-1-BK	110 ±0.3	M6	45 ±0.3	8.5	4.5	530	155

**METRIC**

**RMS-ND-I-1-WT**

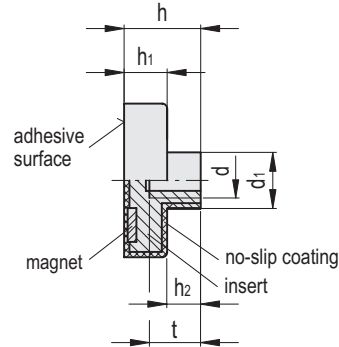
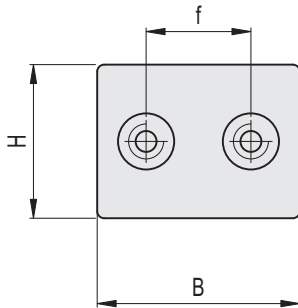
Code	Description	B	d	H	h ±0.2	t	Nominal adhesive forces* [N]	⚖️
502772	RMS-ND-I-35x22,5-1-WT	35 ±0.2	M4	22.5 ±0.2	6	4	75	18
502776	RMS-ND-I-55x22,5-1-WT	55 ±0.2	M4	22.5 ±0.2	6	4	120	29
502784	RMS-ND-I-59x45-1-WT	59 ±0.3	M5	45 ±0.3	8.5	4.5	240	80
502788	RMS-ND-I-74x45-1-WT	74 ±0.3	M6	45 ±0.3	8.5	4.5	360	102
502780	RMS-ND-I-75x22,5-1-WT	75 ±0.3	M4	22.5 ±0.2	6	4	195	41
502792	RMS-ND-I-110x45-1-WT	110 ±0.3	M6	45 ±0.3	8.5	4.5	530	155

\* The values of the nominal adhesive forces are approximate and refer to magnetic properties observed on laboratory samples.

- 1
- 2
- 3
- 4
- 5
- 6
- 7
- 8
- 9
- 10
- 11
- 12
- 13
- 14
- 15
- 16
- 17
- 18
- 19

**Conversion Table**  
1 mm = 0.039 inch

B	
mm	inch
35	1.37
43	1.68
55	2.15
59	2.30
74	2.89
75	2.93
110	4.29



**METRIC**

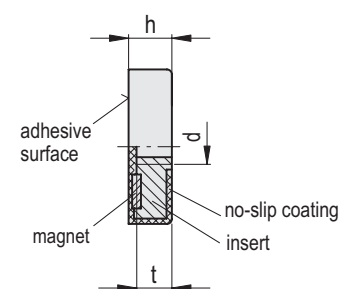
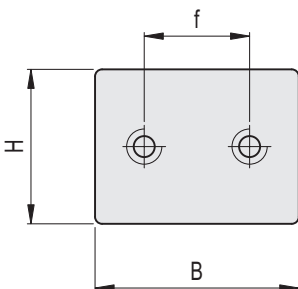
**RMS-ND-2-BK**

Code	Description	B	d	H	h ±0.2	h1 ±0.2	h2	d1	f	t	Nominal adhesive forces* [N]	⚖️
502949	RMS-ND-35x22,5-2-BK	35 ±0.2	M4	22.5 ±0.2	11	6	5	8	17	6	93	23
502966	RMS-ND-43x31-2-BK	43 ±0.3	M4	31 ±0.2	7	6	1	10	25	4.5	146	28
502954	RMS-ND-55x22,5-2-BK	55 ±0.2	M4	22.5 ±0.2	11	6	5	8	30	6	140	33
502983	RMS-ND-59x45-2-BK	59 ±0.3	M5	45 ±0.3	14.7	8.5	6.2	10	27	9	240	90
502987	RMS-ND-74x45-2-BK	74 ±0.3	M5	45 ±0.3	14.7	8.5	6.2	10	36	9	360	113
502958	RMS-ND-75x22,5-2-BK	75 ±0.3	M4	22.5 ±0.2	11	6	5	8	50	6	205	48
502991	RMS-ND-110x45-2-BK	110 ±0.3	M6	45 ±0.3	14.7	8.5	6.2	10	68	9	530	161

**RMS-ND-2-WT**

Code	Description	B	d	H	h ±0.2	h1 ±0.2	h2	d1	f	t	Nominal adhesive forces* [N]	⚖️
502950	RMS-ND-35x22,5-2-WT	35 ±0.2	M4	22.5 ±0.2	11	6	5	8	17	6	93	23
502967	RMS-ND-43x31-2-WT	43 ±0.3	M4	31 ±0.2	7	6	1	10	25	4.5	146	28
502955	RMS-ND-55x22,5-2-WT	55 ±0.2	M4	22.5 ±0.2	11	6	5	8	30	6	140	33
502984	RMS-ND-59x45-2-WT	59 ±0.3	M5	45 ±0.3	14.7	8.5	6.2	10	27	9	240	90
502988	RMS-ND-74x45-2-WT	74 ±0.3	M5	45 ±0.3	14.7	8.5	6.2	10	36	9	360	113
502959	RMS-ND-75x22,5-2-WT	75 ±0.3	M4	22.5 ±0.2	11	6	5	8	30	6	205	33
502992	RMS-ND-110x45-2-WT	110 ±0.3	M6	45 ±0.3	14.7	8.5	6.2	10	68	9	530	161

\* The values of the nominal adhesive forces are approximate and refer to magnetic properties observed on laboratory samples.



**METRIC**

**RMS-ND-I-2-BK**

Code	Description	B	d	H	h ±0.2	f	t	Nominal adhesive forces* [N]	⚖️
502773	RMS-ND-I-35x22,5-2-BK	35 ±0.2	M4	22.5 ±0.2	6	17	4	75	19
502777	RMS-ND-I-55x22,5-2-BK	55 ±0.2	M4	22.5 ±0.2	6	30	4	120	31
502785	RMS-ND-I-59x45-2-BK	59 ±0.3	M5	45 ±0.3	8.5	27	4.5	240	82
502789	RMS-ND-I-74x45-2-BK	74 ±0.3	M6	45 ±0.3	8.5	36	4.5	360	104
502781	RMS-ND-I-75x22,5-2-BK	75 ±0.3	M4	22.5 ±0.2	6	50	4	195	43
502793	RMS-ND-I-110x45-2-BK	110 ±0.3	M6	45 ±0.3	8.5	68	4.5	530	157

**RMS-ND-I-2-WT**

Code	Description	B	d	H	h ±0.2	f	t	Nominal adhesive forces* [N]	⚖️
502774	RMS-ND-I-35x22,5-2-WT	35 ±0.2	M4	22.5 ±0.2	6	17	4	75	19
502778	RMS-ND-I-55x22,5-2-WT	55 ±0.2	M4	22.5 ±0.2	6	30	4	120	31
502786	RMS-ND-I-59x45-2-WT	59 ±0.3	M5	45 ±0.3	8.5	27	4.5	240	82
502790	RMS-ND-I-74x45-2-WT	74 ±0.3	M6	45 ±0.3	8.5	36	4.5	360	104
502782	RMS-ND-I-75x22,5-2-WT	75 ±0.3	M4	22.5 ±0.2	6	50	4	195	43
502794	RMS-ND-I-110x45-2-WT	110 ±0.3	M6	45 ±0.3	8.5	68	4.5	530	157

\* The values of the nominal adhesive forces are approximate and refer to magnetic properties observed on laboratory samples.

Industrial magnets