

## MATERIAL

Zinc-plated steel threaded pin..

## NO-SLIP COATING

Thermoplastic elastomer (TPE), hardness 80 shore A.

## STANDARD EXECUTION

(NdFeB) Neodymium-iron-boron retaining magnet, for temperatures up to 80°C.

- **RMS-P-ND-1-BK**: with no-slip coating in RAL 9011 black colour, with threaded pin.

- **RMS-P-ND-1-WT**: with no-slip coating in RAL 9016 white colour, with threaded pin.

- **RMS-P-ND-2-BK**: with no-slip coating in RAL 9011 black colour, with two threaded pins.

- **RMS-P-ND-2-WT**: with no-slip coating in RAL 9016 white colour, with two threaded pins.

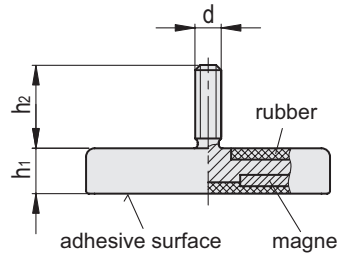
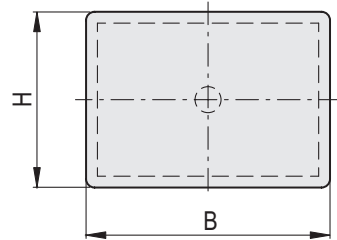
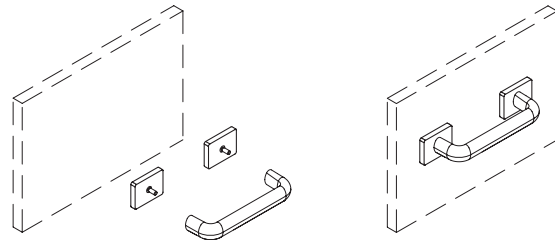
Retaining magnets technical data (on page 1052).

## FEATURES AND APPLICATIONS

RMS-P flat rectangular retaining magnets are shielded magnetic systems with high performances and moderate overall dimensions.

The elastomer surface increases the friction coefficient when lateral retaining forces are present, giving a better adhesion.

These magnets are preferably used for sensitive surfaces.



Conversion Table	
1 mm = 0,039 inch	
B	
mm	inch
35	1.37
55	2.15
59	2.30
74	2.89
75	2.93
110	4.29

## RMS-P-ND-1-BK

Code	Description	B	d	H	h1	h2	Nominal adhesive forces* [N]	⚖️
502977	RMS-P-ND-35x22,5-1-BK	35 ±0.2	M4	22.5 ±0.2	6 ±0.2	6	93	21
502993	RMS-P-ND-55x22,5-1-BK	55 ±0.2	M4	22.5 ±0.2	6 ±0.2	6	140	31
503051	RMS-P-ND-59x45-1-BK	59 ±0.3	M6	45 ±0.3	8.5 ±0.2	15	240	86
503055	RMS-P-ND-74x45-1-BK	74 ±0.3	M8	45 ±0.3	8.5 ±0.2	15	360	111
502997	RMS-P-ND-75x22,5-1-BK	75 ±0.3	M4	22.5 ±0.2	6 ±0.2	6	205	44
503059	RMS-P-ND-110x45-1-BK	110 ±0.3	M8	45 ±0.3	8.5 ±0.2	15	530	163

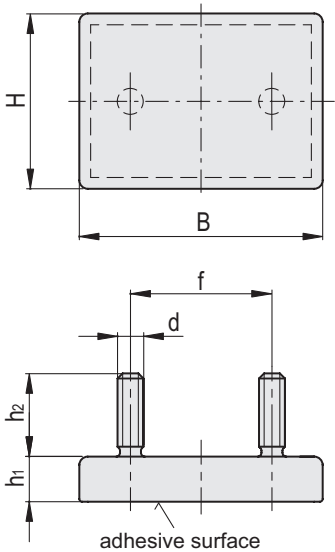
## RMS-P-ND-1-WT

Code	Description	B	d	H	h1	h2	Nominal adhesive forces* [N]	⚖️
502978	RMS-P-ND-35x22,5-1-WT	35 ±0.2	M4	22.5 ±0.2	6 ±0.2	6	93	21
502994	RMS-P-ND-55x22,5-1-WT	55 ±0.2	M4	22.5 ±0.2	6 ±0.2	6	140	31
503052	RMS-P-ND-59x45-1-WT	59 ±0.3	M6	45 ±0.3	8.5 ±0.2	15	240	86
503056	RMS-P-ND-74x45-1-WT	74 ±0.3	M8	45 ±0.3	8.5 ±0.2	15	360	111
502998	RMS-P-ND-75x22,5-1-WT	75 ±0.3	M4	22.5 ±0.2	6 ±0.2	6	205	44
503060	RMS-P-ND-110x45-1-WT	110 ±0.3	M8	45 ±0.3	8.5 ±0.2	15	530	163

\* The values of the nominal adhesive forces are approximate and refer to magnetic properties observed on laboratory samples.



Conversion Table	
1 mm = 0.039 inch	
B	
mm	inch
35	1.37
55	2.15
59	2.30
74	2.89
75	2.93
110	4.29



RMS-P-ND-2-BK

METRIC

Code	Description	B	d	H	h1	h2	f	Nominal adhesive forces* [N]	⚖
502979	RMS-P-ND-35x22,5-2-BK	35 ±0.2	M4	22.5 ±0.2	6 ±0.2	6	17	93	22
502995	RMS-P-ND-55x22,5-2-BK	55 ±0.2	M4	22.5 ±0.2	6 ±0.2	6	30	140	32
503053	RMS-P-ND-59x45-2-BK	59 ±0.3	M6	45 ±0.3	8.5 ±0.2	15	27	240	91
503057	RMS-P-ND-74x45-2-BK	74 ±0.3	M6	45 ±0.3	8.5 ±0.2	15	36	360	114
502999	RMS-P-ND-75x22,5-2-BK	75 ±0.3	M4	22.5 ±0.2	6 ±0.2	6	50	205	45
503061	RMS-P-ND-110x45-2-BK	110 ±0.3	M6	45 ±0.3	8.5 ±0.2	15	68	530	168

RMS-P-ND-2-WT

Code	Description	B	d	H	h1	h2	f	Nominal adhesive forces* [N]	⚖
502980	RMS-P-ND-35x22,5-2-WT	35 ±0.2	M4	22.5 ±0.2	6 ±0.2	6	17	93	22
502996	RMS-P-ND-55x22,5-2-WT	55 ±0.2	M4	22.5 ±0.2	6 ±0.2	6	30	140	32
503054	RMS-P-ND-59x45-2-WT	59 ±0.3	M6	45 ±0.3	8.5 ±0.2	15	27	240	91
503058	RMS-P-ND-74x45-2-WT	74 ±0.3	M6	45 ±0.3	8.5 ±0.2	15	36	360	114
503000	RMS-P-ND-75x22,5-2-WT	75 ±0.3	M4	22.5 ±0.2	6 ±0.2	6	50	205	45
503062	RMS-P-ND-110x45-2-WT	110 ±0.3	M6	45 ±0.3	8.5 ±0.2	15	68	530	168

\* The values of the nominal adhesive forces are approximate and refer to magnetic properties observed on laboratory samples.