

- 1
- 2
- 3
- 4
- 5
- 6
- 7
- 8
- 9
- 10
- 11
- 12
- 13
- 14
- 15
- 16
- 17
- 18

HANDLE SHANKS

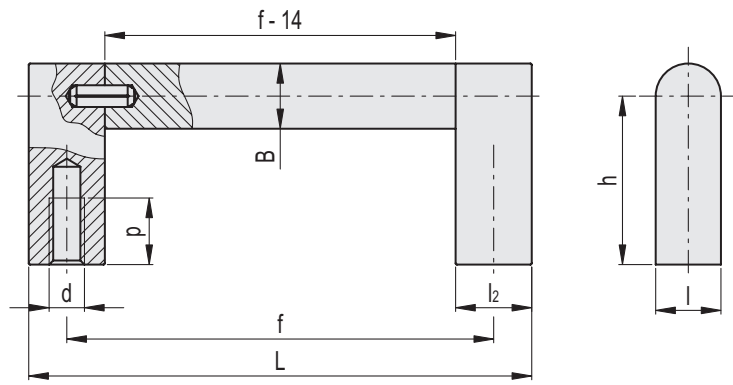
AISI 316L stainless steel, with ground, shot-blasted and electrolytically polished semi-matte surfaces.

BAR

Round-section AISI 316L stainless steel, with ground, shot-blasted and electrolytically polished semi-matte surfaces.

SPECIAL EXECUTIONS ON REQUEST

Handles with different lengths.



Conversion Table
1 mm = 0.039 inch

L	
mm	inch
114	4.49
134	5.28
154	6.06
174	6.85
194	7.64

Code	f	L	d	p	B	h	l	l2	⚖
RHUG-08.100.36	100	114	M6	12	12	31	12	14	163
RHUG-08.120.36	120	134	M6	12	12	31	12	14	180
RHUG-08.140.36	140	154	M6	12	12	31	12	14	199
RHUG-08.160.36	160	174	M6	12	12	31	12	14	217
RHUG-08.180.36	180	194	M6	12	12	31	12	14	235