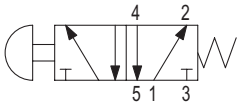


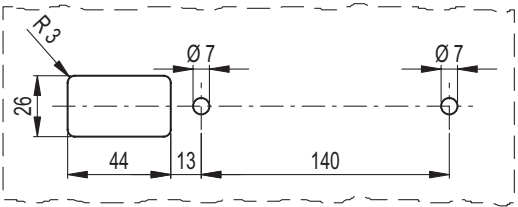
- HANDLE SHANKS**  
Glass-fibre reinforced polyamide based (PA) technopolymer, matte finish.
- TUBE**  
Anodised aluminium in natural colour, sandblasted matte finish.
- BUTTON**  
Aluminium, blue colour similar to RAL5002.
- STANDARD EXECUTIONS**  
Nickel-plated steel bushings, threaded blind hole.  
By keeping the button pressed, the air outlet channel switches between the two available:  
- **RH-FG18-P5-L**: one pneumatic valve, connection on the left.  
- **RH-FG18-P5-R**: one pneumatic valve, connection on the right.  
By keeping one or both of the buttons pressed, the air outlet channel switches between the two available:  
- **RH-FG18-P5-LL**: two pneumatic valves, connection on the left.  
- **RH-FG18-P5-RR**: two pneumatic valves, connection on the right.
- FUNCTIONING**  
The handle is supplied complete with quick couplings for direct connection to a Ø 4 mm tube.  
The handle allows direct control of one or two double-acting pneumatic actuators (execution 5/2).  
The handle has a pressure chamber discharge function.
- OTHER STANDARD EXECUTIONS**  
RH-VM-02: single complementary handle without push button and without valve RHVM-02.30.140.S11 (see page -).



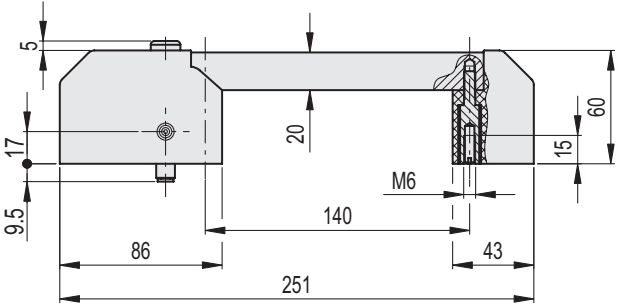
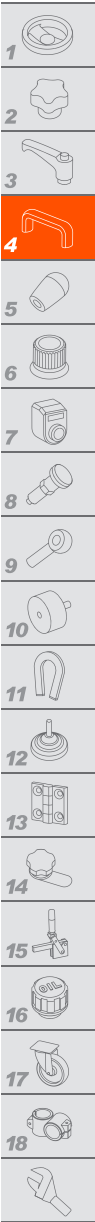
Pneumatic valve



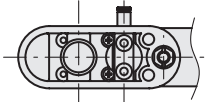
Drilling template



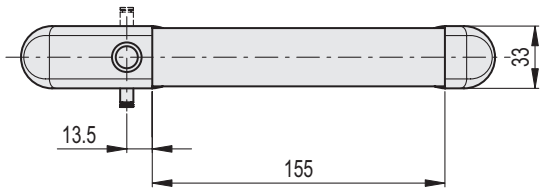
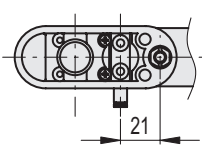
Technical features	
Functioning	Filtered air
Operating pressure	Max. 10 bar
Working temperature	-5° ÷ +70°C
Load capacity	120 NI/min (6 bar)
Action force	14 N (indipendente dalla pressione di esercizio)
Nominal diameter air passage	Ø 4 mm



RH-FG18-P5-L



RH-FG18-P5-R



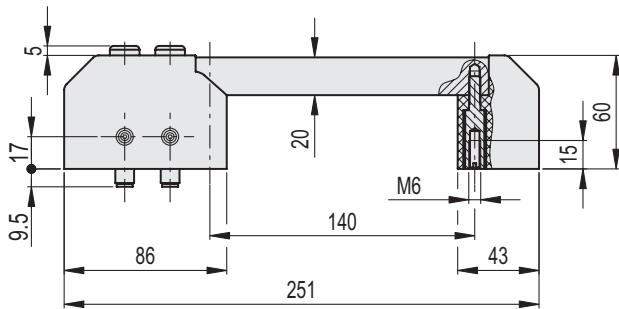
Conversion Table  
1 mm = 0.039 inch

RH-FG18-P5-L

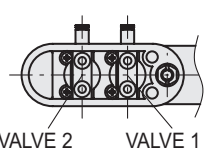
RH-FG18-P5-R

METRIC

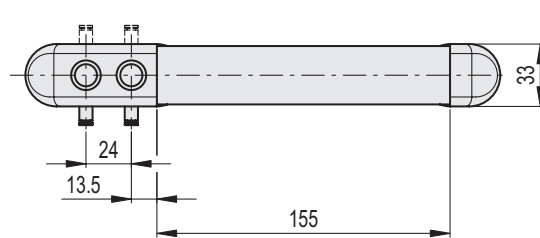
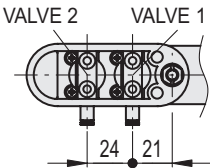
Code	Code	⚖
RHFG18-P5.L140.11	RHFG18-P5.R140.11	482



RH-FG18-P5-LL



RH-FG18-P5-RR



Conversion Table  
1 mm = 0.039 inch

RH-FG18-P5-LL

RH-FG18-P5-RR

METRIC

Code	Code	⚖
RHFG18-P5.LL140.11	RHFG18-P5.RR140.11	536