

- 1
- 2
- 3
- 4
- 5
- 6
- 7
- 8
- 9
- 10
- 11
- 12
- 13
- 14
- 15
- 16
- 17
- 18

MATERIAL

Round-section AISI 316L stainless steel, with ground, shot-blasted surfaces, electrolytically polished matte finish.

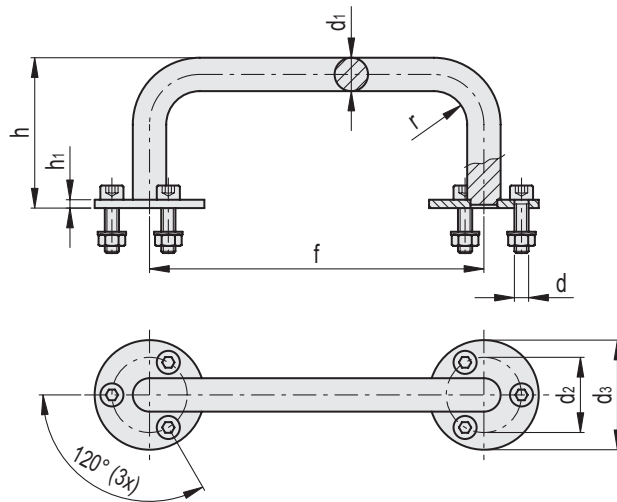
FIXING PLATES

AISI 316L stainless steel, with shot-blasted surfaces electrolytically obtained polished matte finish, fixed to the handle by means of welding.

Smooth pass-through holes for cylinder head screws with M8x35 hexagonal socket and AISI 316L stainless steel washers, included in the supply.

SPECIAL EXECUTIONS ON REQUEST

Handles with different lengths.



Conversion Table	
1 mm = 0.039 inch	
f	
mm	inch
200	7.87
300	11.81

Code	f	d	d1	h	h1	d2	d3	r	⚖️
RHEM-20.200.075.46	200	M8x35	20	75	5	45	65	20	950
RHEM-20.200.090.46	200	M8x35	20	90	5	45	65	20	1025
RHEM-25.300.090.46	300	M8x35	25	90	5	50	70	30	1860
RHEM-25.300.120.46	300	M8x35	25	120	5	50	70	30	2095