

MATERIAL

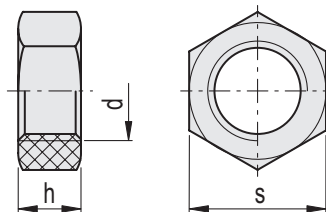
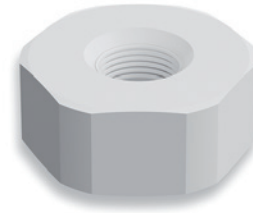
Polyamide based (PA) technopolymer, natural colour.

FEATURES AND APPLICATIONS

The nut is similar in shape and size to that specified in DIN 934 or ISO 4032.

It is made entirely from insulating material that is resistant to corrosion and chemicals. It is suitable for applications in industry, aeronautics and electronics, and in all cases where weight reduction is required.

The product is tested for mechanical and dimensional performance. Slight colour variations are perfectly normal and do not affect the quality of the product.



METRIC

Code	Description	d	s	h	Δ
504028	NTI.4032-M4-TP-N	M4	7	3	1
504029	NTI.4032-M5-TP-N	M5	8	4.5	1
504023	NTI.4032-M6-TP-N	M6	10	5.5	1
504024	NTI.4032-M8-TP-N	M8	13	6.5	1
504025	NTI.4032-M10-TP-N	M10	16	8.5	1.5
504026	NTI.4032-M12-TP-N	M12	18	10.5	2
504027	NTI.4032-M16-TP-N	M16	24	15	4