

- 1
- 2
- 3
- 4
- 5
- 6
- 7
- 8
- 9
- 10
- 11
- 12
- 13
- 14
- 15
- 16
- 17
- 18
- 19

MATERIAL

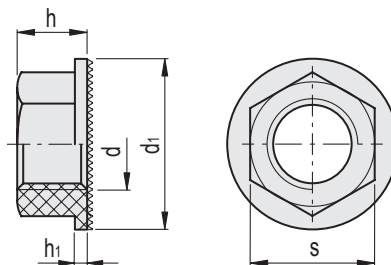
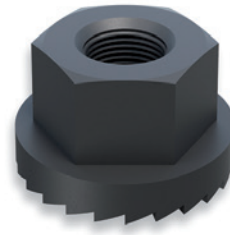
Glass-fibre reinforced polyamide based (PA) technopolymer, black colour.

FEATURES AND APPLICATIONS

The nut consists of a serrated flange that replaces the washer. This provides a more secure grip, partly due to the larger contact surface area compared to a standard nut.

It is made entirely from insulating material that is resistant to corrosion and chemicals. It is suitable for applications in construction, industry, aeronautics and electronics, and in all cases where weight reduction is required.

The product is tested for mechanical and dimensional performance. Slight colour variations are perfectly normal and do not affect the quality of the product.



Code	Description	d	d1	s	h	h1	⚖️
504001	NTD-M5-TP-N	M5	11	8	6	1.5	1
504002	NTD-M6-TP-N	M6	13	10	6.5	2	1
504003	NTD-M8-TP-N	M8	17	13	8	2	1
504006	NTD-M10-TP-N	M10	22	16	10	2.5	1.5
504007	NTD-M12-TP-N	M12	27	18	13	3.5	2