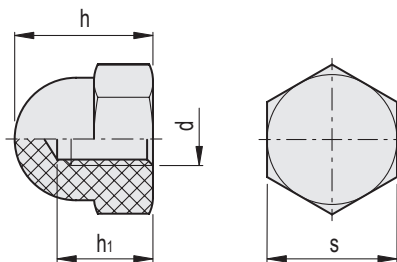
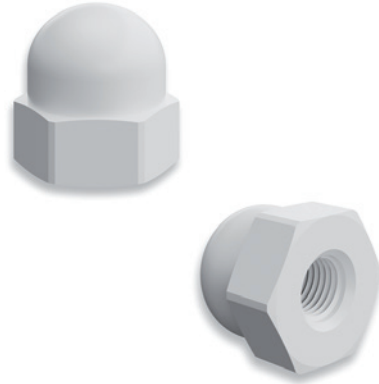


MATERIAL

Polyamide based (PA) technopolymer, natural colour.

FEATURES AND APPLICATIONS

The nut is similar in shape and size to that specified in DIN 1587. It is made entirely from insulating material that is resistant to corrosion and chemicals. This guarantees complete protection of the thread and makes it suitable for use in signage, as well as in industry, aeronautics, electronics and in all cases where weight reduction is required. The product is tested for mechanical and dimensional performance. Slight colour variations are perfectly normal and do not affect the quality of the product.



METRIC

Code	Description	d	s	h	h1	⚖️
504018	NTD.1587-M4-TP-N	M4	7	8	5.5	1
504019	NTD.1587-M5-TP-N	M5	8	9.5	7.5	1
504013	NTD.1587-M6-TP-N	M6	10	12	8	1
504014	NTD.1587-M8-TP-N	M8	13	15.5	11	1.5
504015	NTD.1587-M10-TP-N	M10	17	18	13	2.5
504016	NTD.1587-M12-TP-N	M12	19	22	16	3
504017	NTD.1587-M16-TP-N	M16	24	28	21	4