

MATERIAL

C10 zinc-plated steel.

RIVETS

Zinc-plated steel.

SUPPORT BUSHINGS

Zinc-plated steel.

HANDLE

Polyurethane, red colour.

ANTI RELEASE LEVER

Zinc-plated steel.

SPRING

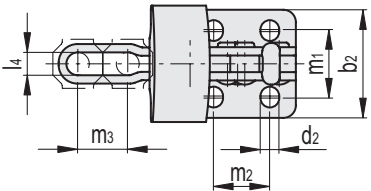
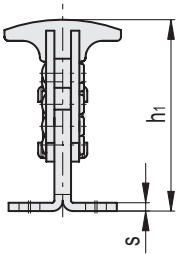
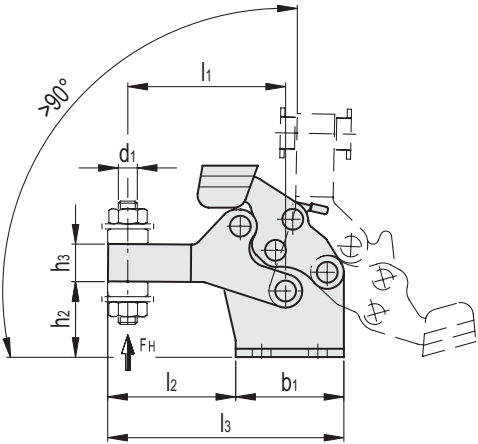
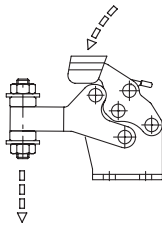
AISI 302 stainless steel.

CLAMPING BOLT

to be ordered separately

FEATURES AND APPLICATIONS

Anti-release lever to prevent accidental opening in the presence of strong vibrations. All articulated joints are lubricated with special grease. The ergonomic T-handle allows the lever to be opened using only two fingers. A special feature of MOD-S toggle clamps is their low closure profile. During clamping, the lever is controlled to prevent impact on functioning due to side thrust. Supplied complete with two folded washers required for attaching clamping bolts (to be ordered separately). Slotted assembly holes for applications in inches.



METRIC

Code	Description	b1	b2	d1	d2	h1	h2	h3	l1	l2	l3	l4	m1	m2	m3	s	FH* [N]	ΔL
GG.AD400	MOD-S.80-ML	26	26	M5	4.5	46	18	9	38	31	57	5.5	15.5+16.5	13.5	10	2	900	67
GG.AD404	MOD-S.140-ML	44	44	M8	6.6	69	26	15	62.5	49	93	8.5	26+29.5	23	17	2.5	1300	218
GG.AD408	MOD-S.250-ML	64	62	M10	8.7	96	34	20	89	67	131	10.5	37.5+38.5	35	24	3	1200	532

* Holding force.