

**MATERIAL**

High-resilience polypropylene based (PP) technopolymer, black colour, matte finish.

**FLUTED RIM**

"Soft-touch" thermoplastic elastomer (TPE) chemically bonded, hardness 70 Shore A. Produced from FDA compliant raw material (FDA CFR.21 and EU 10/2011).

**STANDARD EXECUTIONS**

- **MBT-B-SOFT:** brass boss, threaded blind hole.
- **MBT-p-SOFT:** zinc-plated steel threaded stud, chamfered flat end according to ISO 4753 (see Technical Data on page A-10).

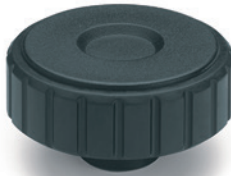
**FEATURES AND APPLICATIONS**

The rim, coated with "soft-touch" elastomer, improves the grip even in the presence of oils, greases and sweat from the hand. For this reason these fluted knobs are suitable for fitness machines, tools and machines for gardening and goods transport, high-precision instruments and disability aids.

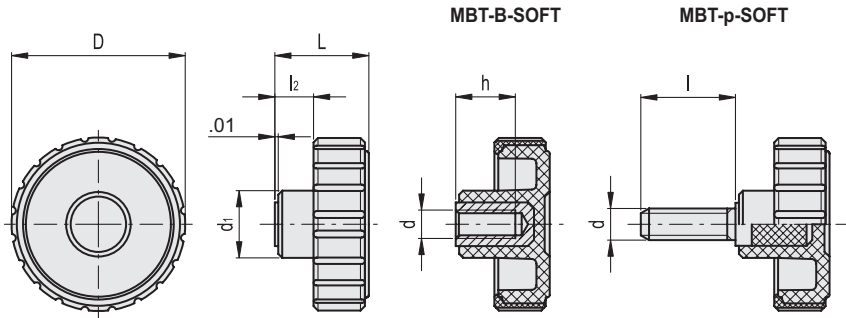
**ERGONOMY**

This kind of knob allows operation in an ergonomic way in all working conditions, reaching the maximum torque level with little fatigue for the operator's hand.

The very fine pitch structure of the rim, together with the soft-touch cover, simplifies the adjustment of the knob during rapid rotation (or screwing) without any unpleasant angular work for the hand and wrist.



ELESA Original design



**MBT-B-SOFT**

Code	Description	D	d2B	L	d1	l2	h	C# [ft lb]	⚖
9134326	MBT.45 B-5/16-18-SOFT	1.73	5/16-18	0.94	0.67	0.39	0.51	13.27	0.07
9134426	MBT.55 B-3/8-16-SOFT	2.13	3/8-16	1.18	0.79	0.49	0.71	23.58	0.1

**MBT-p-SOFT**

Code	Description	D	d2A	L	d1	l	l2	C# [ft lb]	⚖
9134391	MBT.45 p-5/16-18x1-SOFT	1.73	5/16-18	0.94	0.67	1.000	0.39	8.84	0.09
9134456	MBT.55 p-3/8-16x1¼-SOFT	2.13	3/8-16	1.18	0.79	1.250	0.49	17.69	0.14

# "Max limit Tightening torque" means the max torque value at which the metal insert, in normal conditions of use, is perfectly and strongly anchored to the plastic material.