

M.478 | Bridge handle

Technopolymer



- 1
- 2
- 3
- 4
- 5
- 6
- 7
- 8
- 9
- 10
- 11
- 12
- 13
- 14
- 15
- 16
- 17
- 18
- 19

MATERIAL

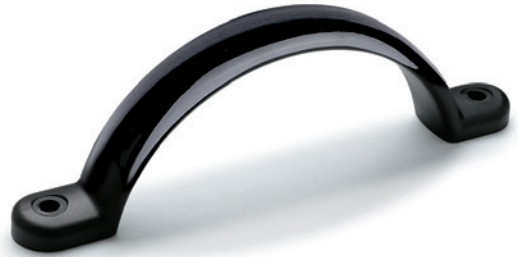
Glass-fibre reinforced polyamide based (PA) technopolymer, black colour, glossy finish.

STANDARD EXECUTION

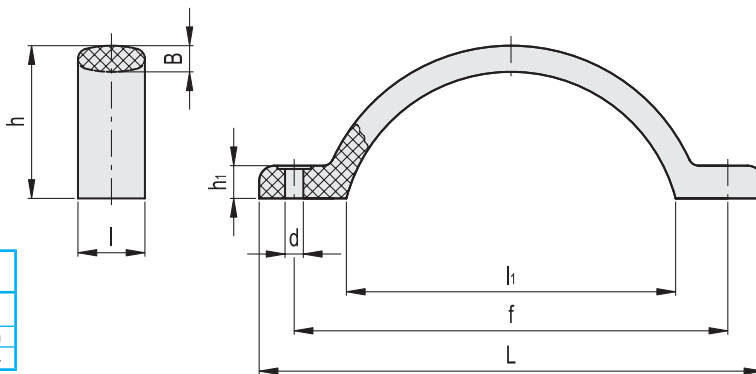
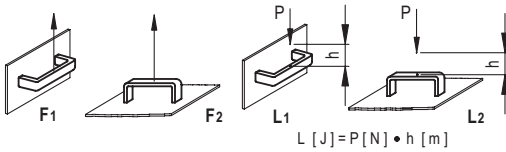
Pass-through holes for screws or rivets.

TECHNICAL DATA

Tensile stress and impact strength: the values F1, F2, L1 and L2 indicated in the table were obtained during breaking tests carried out with the appropriate dynamometric equipment under the test conditions shown in the figure with ambient temperature.



ELESA Original design



Conversion Table			
1 mm = 0.039 inch			
L		d	
mm	inch	mm	inch
173	6.81	6	0.24

METRIC

Code	Description	L	f	d	h	h1	B	l	l1	F1 [N]	F2 [N]	L1 [J]	L2 [J]	
37451	M.478/150-6	173	150±0.5	6	52.5	9	8	23	113	1800	4500	18	8	46

Lift & Pull handles