

MATERIAL

Glass-fibre reinforced polyamide based (PA) technopolymer, black colour, matte finish.

STANDARD EXECUTION

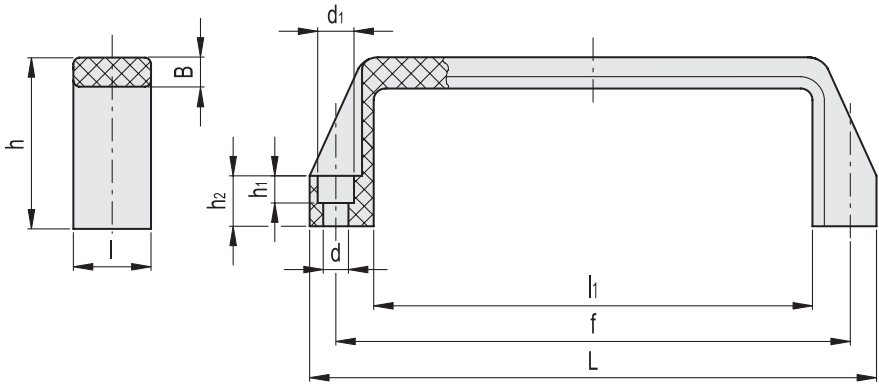
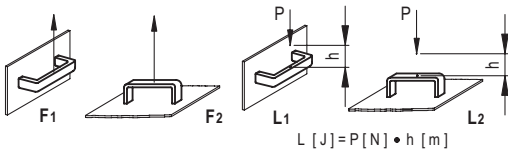
Pass-through holes for cylindrical-head screws with hexagon socket.

FEATURES AND APPLICATIONS

The M.453-SEMI-S8 handle, with design based on the M.443 bridge handle, was developed for dimensions following the SEMI-S8 guidelines.

TECHNICAL DATA

Tensile stress and impact strength: the values F1, F2, L1 and L2 indicated in the table were obtained during breaking tests carried out with the appropriate dynamometric equipment under the test conditions shown in the figure with ambient temperature.



Conversion Table 1 mm = 0.039 inch					
L		d		d1	
mm	inch	mm	inch	mm	inch
168	6.61	7	0.27	13.5	0.53

														METRIC		
Code	Description	L	l	f±1	d	d1	h	h1	h2	B	l1	F1 [N]	F2 [N]	L1 [J]	L2 [J]	⚖️
37261	M.453/168-7-CH-C9-SEMI	168	27	150	7	13.5	54.5	8.5	16	13	126	3500	4900	48	28	78