



MATERIAL

Glass-fibre reinforced polyamide based (PA) technopolymer certified self-extinguishing UL-94 V0, black colour, matte finish.

STANDARD EXECUTIONS

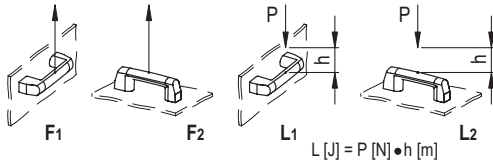
Brass bushings, M6 threaded blind holes for rear mounting.

APPLICATIONS

The M.2000 handle can be combined with M.2000-SWM handles with monostable electrical switch.

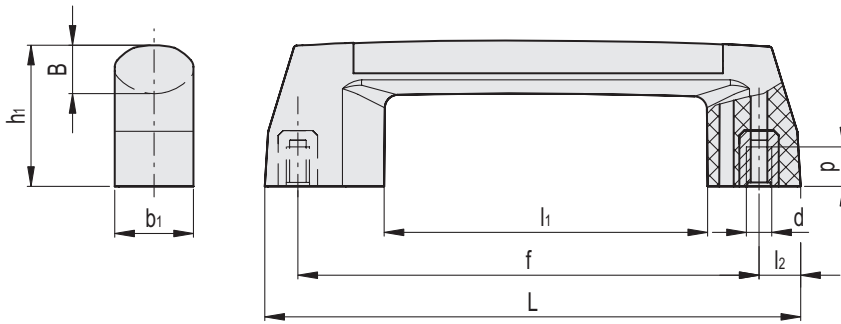
TECHNICAL DATA

Tensile stress and impact strength: the values F1, F2, L1 and L2 indicated in the table were obtained during breaking tests carried out under the test conditions shown in the figure with ambient temperature.



ELESA Original design

| Conversion Table 1 mm = 0.039 inch |      |     |      |    |      |
|------------------------------------|------|-----|------|----|------|
| L                                  |      | f   |      | b1 |      |
| mm                                 | inch | mm  | inch | mm | inch |
| 212.5                              | 8.29 | 180 | 7.02 | 35 | 1.37 |



| Code      | Description     | L     | f±1 | d  | h1 | B  | b1 | l1  | l2 | p  | F1 [N] | F2 [N] | L1 [J] | L2 [J] | ⚖   |
|-----------|-----------------|-------|-----|----|----|----|----|-----|----|----|--------|--------|--------|--------|-----|
| 260830-C1 | M.2000/180-B-M6 | 212.5 | 180 | M6 | 65 | 24 | 35 | 113 | 20 | 12 | 700    | 900    | 7      | 6      | 210 |

METRIC

- 1
- 2
- 3
- 4
- 5
- 6
- 7
- 8
- 9
- 10
- 11
- 12
- 13
- 14
- 15
- 16
- 17
- 18

Handles