

METRIC



HANDLE SHANKS

Glass-fibre reinforced polyamide based (PA) technopolymer, black colour, matte finish. Supplied assembled. The handle shank connection to the tube avoids tube rotation.



INTERMEDIATE SHANK

Glass-fibre reinforced polyamide based (PA) technopolymer, black colour, matte finish. Supplied assembled.



Headless screw with hexagon socket for fixing the support to the AISI 304 stainless steel tube.



Slotted pass-through hole with slot for cylindrical or hexagon head screws.



STANDARD EXECUTIONS

Pass-through holes for cylindrical-head screws with hexagon socket.

- **M.1043-SCM-EP:** aluminium tube, epoxy resin coating, metallflake graphite colour, matte finish. Highly resistant to wear, scratches and chemical agents. Avoid continuous and prolonged contact with boiling water or steam.

- **M.1043-SCM-AN:** anodised aluminium tube, natural colour.

Brass bosses, threaded blind holes.

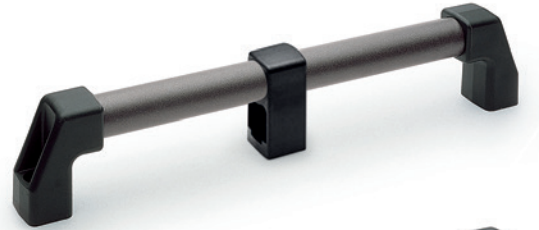
- **M.1043-SCM-BM-EP:** aluminium tube, epoxy resin coating, metallflake graphite colour, matte finish. Highly resistant to wear, scratches and chemical agents. Avoid continuous and prolonged contact with boiling water or steam.

- **M.1043-SCM-BM-AN:** anodised aluminium tube, natural colour.



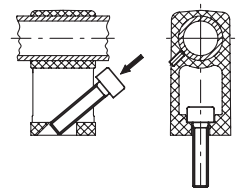
TECHNICAL DATA

Tensile stress: F2 values reported in the table are the result of breaking tests carried out with the appropriate dynamometric equipment under the test conditions shown in the figure with ambient temperature.



ELESA Original design

Assembly intermediate shank

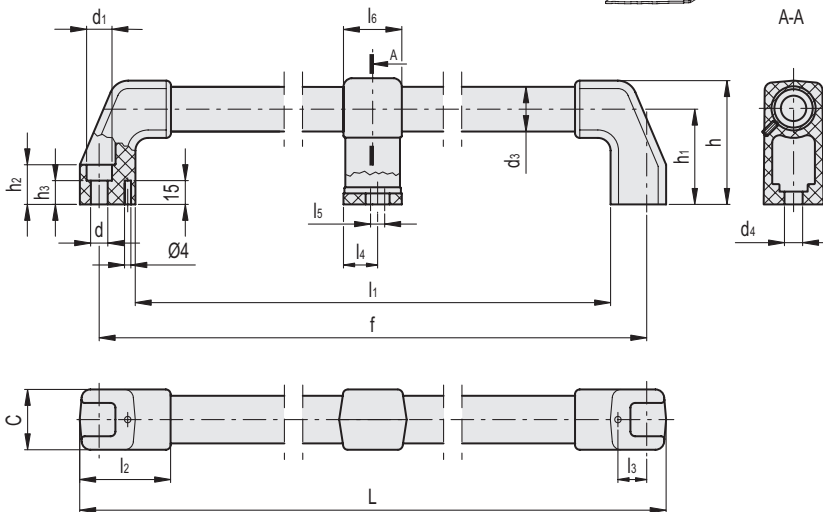


Conversion Table
1 mm = 0,039 inch

L	
mm	inch
720	28.08
724	28.24
1024	39.94

Conversion Table
1 mm = 0,039 inch

d		d1	
mm	inch	mm	inch
8.5	0.33	13.5	0.53
10.5	0.41	16	0.62



M.1043-SCM-EP

Code	Description	d3	f±1	L	d	d1	d4	h	h1	h2	h3	l1	l2	l3	l4	l5	l6	C	F2* [N]	F2# [N]	⚖
37041-R	M.1043/20-700-EP-SCM	20	700	720	8.5	13.5	8.5	58	45	18	9.5	662	47	13	18	10±4	30	28	1900	2500	280
37051-R	M.1043/30-700-EP-SCM	30	700	724	10.5	16	10.5	78	60	25	15	654	57	18	22	13±5	36	38	4200	4500	540
37061-R	M.1043/30-1000-EP-SCM	30	1000	1024	10.5	16	10.5	78	60	25	15	954	57	18	22	13±5	36	38	2800	3600	640

M.1043-SCM-AN

Code	Description	d3	f±1	L	d	d1	d4	h	h1	h2	h3	l1	l2	l3	l4	l5	l6	C	F2* [N]	F2# [N]	⚖
37043-R	M.1043/20-700-AN-SCM	20	700	720	8.5	13.5	8.5	58	45	18	9.5	662	47	13	18	10±4	30	28	1900	2500	280
37053-R	M.1043/30-700-AN-SCM	30	700	724	10.5	16	10.5	78	60	25	15	654	57	18	22	13±5	36	38	4200	4500	570
37063-R	M.1043/30-1000-AN-SCM	30	1000	1024	10.5	16	10.5	78	60	25	15	954	57	18	22	13±5	36	38	2800	3600	595

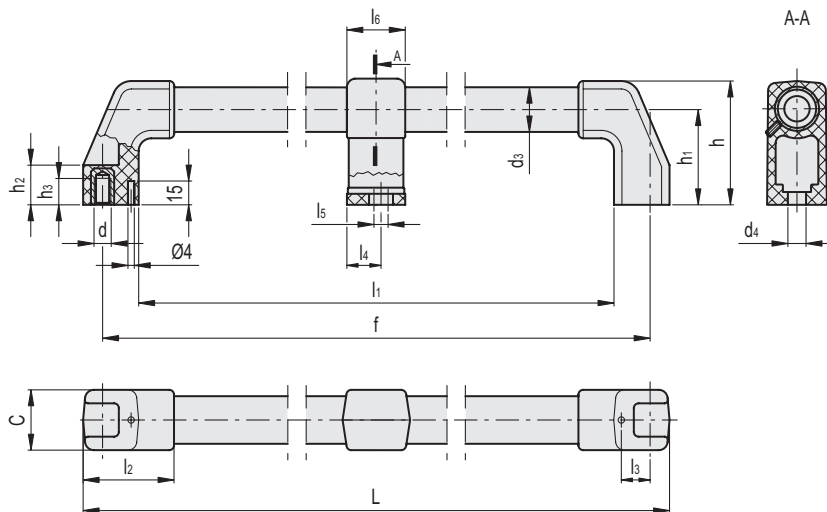
METRIC

Handles

* Maximum working load # Load at breakage.

Conversion Table
1 mm = 0.039 inch

L	
mm	inch
720	28.08
724	28.24
754	29.41



M.1043-SCM-BM-EP

METRIC

Code	Description	d3	f±1	L	d	d4	h	h1	h2	h3	l1	l2	l3	l4	l5	l6	C	F2* [N]	F2# [N]	△
37045-R	M.1043 BM/20-700-EP-SCM	20	700	720	M8	8.5	58	45	18	10	662	47	13	18	10±4	30	28	1900	2500	280
37055-R	M.1043 BM/30-700-EP-SCM	30	700	724	M10	10.5	78	60	25	17	654	57	18	22	13±5	36	38	4200	4500	550
37065-R	M.1043 BM/30-1000-EP-SCM	30	1000	754	M10	10.5	78	60	25	17	954	57	18	22	13±5	36	38	2800	3600	650

M.1043-SCM-BM-AN

Code	Description	d3	f±1	L	d	d4	h	h1	h2	h3	l1	l2	l3	l4	l5	l6	C	F2* [N]	F2# [N]	△
37046-R	M.1043 BM/20-700-AN-SCM	20	700	720	M8	8.5	58	45	18	10	662	47	13	18	10±4	30	28	1900	2500	280
37056-R	M.1043 BM/30-700-AN-SCM	30	700	724	M10	10.5	78	60	25	17	654	57	18	22	13±5	36	38	4200	4500	580
37066-R	M.1043 BM/30-1000-AN-SCM	30	1000	1024	M10	10.5	78	60	25	17	954	57	18	22	13±5	36	38	2800	3600	605

* Maximum working load # Load at breakage.

