

- 1
- 2
- 3
- 4
- 5
- 6
- 7
- 8
- 9
- 10
- 11
- 12
- 13
- 14
- 15
- 16
- 17
- 18
- 19

BASE

Glass-fibre reinforced polyamide based (PA) technopolymer, black colour, matte finish.

ARTICULATED STEM

Glass-fibre reinforced polyamide based (PA) SUPER-technopolymer, with hexagonal socket and regulation hexagon.

STANDARD EXECUTIONS

- **LV.FO-STP**: without no-slip disk.
- **LV.FO-AS-STP**: with NBR rubber no-slip disk, hardness 70 Shore A, supplied assembled to the base.

FEATURES

Thanks to the property of the SUPER-technopolymer stem, high rigidity and mechanical resistance are obtained in addition to natural resistance to corrosion.

The special knurling under the lower lip of the base provides excellent stability and grip when using the levelling element without no-slip disk even on surfaces that are not perfectly flat.

The particular assembling system of the no-slip disk to the base assures a perfect anchoring, preventing separation even in case of impact during transport or of adhesion (sticking) to the floor (see No-slip disks on page).

ORDER INFORMATION

The levelling feet are supplied unassembled to make carriage and storage easier. The components (base and stem) are supplied in separate packing: less volume taken and better protection from scratches and dirt.

To order bases and stems separately, see:

- table of possible combinations Bases/Stems (see page 839)
- the codes of the Bases (see page 836)
- the codes of the Stems (see page 840).

ACCESSORIES ON REQUEST

NT. (see page -): AISI 304 stainless steel or zinc-plated steel nut.



ELESA Original design

Break the diaphragm

Make a hole

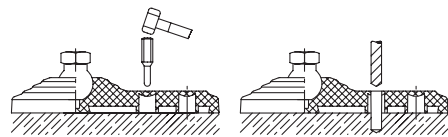
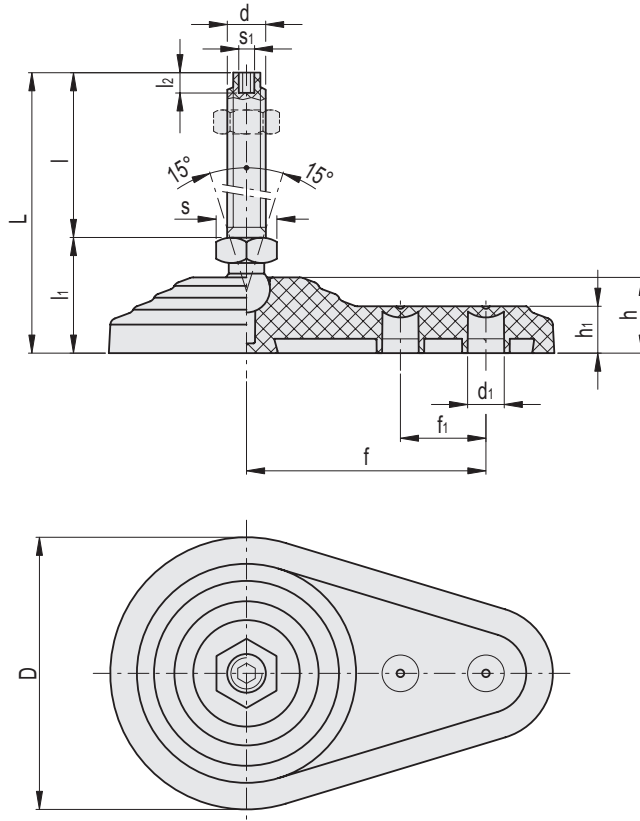


Fig.1



Conversion Table	
1 mm = 0.039 inch	
D	
mm	inch
60	2.34
80	3.12

LV.FO-STP

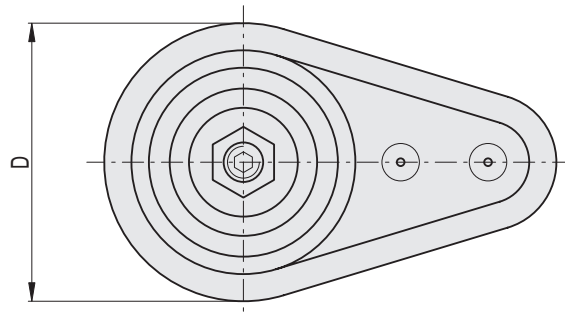
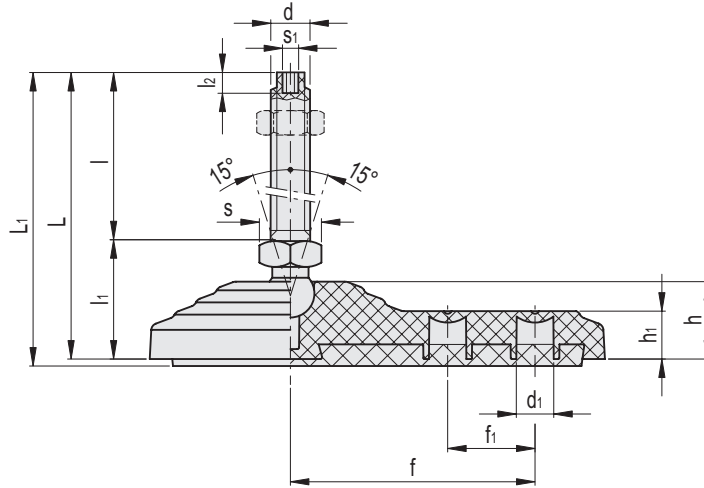
METRIC

Code	Description	D	d1	d	L	l	l1	l2	h	h1	f	f1	s	s1	Articulation Ø	Max. limit static load* [N]	⚖️
513013	LV.FO-60-14-STP-M8x44	60	8.5	M8	75.5	44	31.5	5	21	14	50	18	16	3	14	2700	56
513018	LV.FO-60-14-STP-M8x69	60	8.5	M8	100.5	69	31.5	5	21	14	50	18	16	3	14	2700	57.5
513023	LV.FO-60-14-STP-M10x44	60	8.5	M10	75.5	44	31.5	6	21	14	50	18	16	4	14	4800	57.5
513028	LV.FO-60-14-STP-M10x69	60	8.5	M10	100.5	69	31.5	6	21	14	50	18	16	4	14	5000	60
513033	LV.FO-60-14-STP-M10x99	60	8.5	M10	130.5	99	31.5	6	21	14	50	18	16	4	14	5100	63
513038	LV.FO-60-14-STP-M12x44	60	8.5	M12	75.5	44	31.5	7	21	14	50	18	16	5	14	6800	59
513043	LV.FO-60-14-STP-M12x69	60	8.5	M12	100.5	69	31.5	7	21	14	50	18	16	5	14	7000	63
513048	LV.FO-60-14-STP-M12x99	60	8.5	M12	130.5	99	31.5	7	21	14	50	18	16	5	14	7000	67.5
513053	LV.FO-60-14-STP-M16x69	60	8.5	M16	102	69	33	7	21	14	50	18	22	6	14	8000	78
513058	LV.FO-60-14-STP-M16x109	60	8.5	M16	142	109	33	7	21	14	50	18	22	6	14	8000	88.5
513063	LV.FO-60-14-STP-M16x149	60	8.5	M16	182	149	33	7	21	14	50	18	22	6	14	7000	99
513068	LV.FO-60-14-STP-M16x169	60	8.5	M16	202	169	33	7	21	14	50	18	22	6	14	6000	104.5
513123	LV.FO-80-14-STP-M8x44	80	10.5	M8	77	44	33	5	22	14	70	25	16	3	14	2700	94
513127	LV.FO-80-14-STP-M8x69	80	10.5	M8	102	69	33	5	22	14	70	25	16	3	14	2700	95.5
513223	LV.FO-80-14-STP-M10x44	80	10.5	M10	77	44	33	6	22	14	70	25	16	4	14	4800	95.5
513227	LV.FO-80-14-STP-M10x69	80	10.5	M10	102	69	33	6	22	14	70	25	16	4	14	5000	98
513233	LV.FO-80-14-STP-M10x99	80	10.5	M10	132	99	33	6	22	14	70	25	16	4	14	5100	101
513323	LV.FO-80-14-STP-M12x44	80	10.5	M12	77	44	33	7	22	14	70	25	16	5	14	6800	97
513327	LV.FO-80-14-STP-M12x69	80	10.5	M12	102	69	33	7	22	14	70	25	16	5	14	7000	101
513333	LV.FO-80-14-STP-M12x99	80	10.5	M12	132	99	33	7	22	14	70	25	16	5	14	7000	105.5
513523	LV.FO-80-14-STP-M16x69	80	10.5	M16	104	69	35	7	22	14	70	25	22	6	14	8000	114
513527	LV.FO-80-14-STP-M16x109	80	10.5	M16	144	109	35	7	22	14	70	25	22	6	14	8000	124.5
513543	LV.FO-80-14-STP-M16x149	80	10.5	M16	184	149	35	7	22	14	70	25	22	6	14	7000	135
513563	LV.FO-80-14-STP-M16x169	80	10.5	M16	204	169	35	7	22	14	70	25	22	6	14	6000	140.5

* The max static load is the value above which the load applied to the element may cause some plastic material breakage, in particular conditions of use. Obviously, a factor that takes into consideration the importance and the safety level of the specific application must be applied to this value.



- 1
- 2
- 3
- 4
- 5
- 6
- 7
- 8
- 9
- 10
- 11
- 12
- 13
- 14
- 15
- 16
- 17
- 18
- 19



Conversion Table	
1 mm = 0.039 inch	
D	
mm	inch
60	2.34
80	3.12

LV.FO-AS-STP

METRIC

Code	Description	D	d1	d	L	L1	l	l1	l2	h	h1	f	f1	s	s1	Articulation Ø	Max. limit static load* [N]	Δ
516013	LV.FO-60-14-AS-STP-M8x44	60	8.5	M8	75.5	78.5	44	31.5	5	21	14	50	18	16	3	14	2700	72
516018	LV.FO-60-14-AS-STP-M8x69	60	8.5	M8	100.5	103.5	69	31.5	5	21	14	50	18	16	3	14	2700	73.5
516023	LV.FO-60-14-AS-STP-M10x44	60	8.5	M10	75.5	78.5	44	31.5	6	21	14	50	18	16	4	14	4800	73.5
516028	LV.FO-60-14-AS-STP-M10x69	60	8.5	M10	100.5	103.5	69	31.5	6	21	14	50	18	16	4	14	5000	76
516033	LV.FO-60-14-AS-STP-M10x99	60	8.5	M10	130.5	133.5	99	31.5	6	21	14	50	18	16	4	14	5100	79
516038	LV.FO-60-14-AS-STP-M12x44	60	8.5	M12	75.5	78.5	44	31.5	7	21	14	50	18	16	5	14	6800	75
516043	LV.FO-60-14-AS-STP-M12x69	60	8.5	M12	100.5	103.5	69	31.5	7	21	14	50	18	16	5	14	7000	79
516048	LV.FO-60-14-AS-STP-M12x99	60	8.5	M12	130.5	133.5	99	31.5	7	21	14	50	18	16	5	14	7000	83.5
516053	LV.FO-60-14-AS-STP-M16x69	60	8.5	M16	102	105	69	33	7	21	14	50	18	22	6	14	8000	93.5
516058	LV.FO-60-14-AS-STP-M16x109	60	8.5	M16	142	145	109	33	7	21	14	50	18	22	6	14	8000	104
516063	LV.FO-60-14-AS-STP-M16x149	60	8.5	M16	182	185	149	33	7	21	14	50	18	22	6	14	7000	114.5
516068	LV.FO-60-14-AS-STP-M16x169	60	8.5	M16	202	205	169	33	7	21	14	50	18	22	6	14	6000	120
516123	LV.FO-80-14-AS-STP-M8x44	80	10.5	M8	77	80	44	33	5	22	14	70	25	16	3	14	2700	124
516127	LV.FO-80-14-AS-STP-M8x69	80	10.5	M8	102	105	69	33	5	22	14	70	25	16	3	14	2700	125.5
516223	LV.FO-80-14-AS-STP-M10x44	80	10.5	M10	77	80	44	33	6	22	14	70	25	16	4	14	4800	125.5
516227	LV.FO-80-14-AS-STP-M10x69	80	10.5	M10	102	105	69	33	6	22	14	70	25	16	4	14	5000	128
516233	LV.FO-80-14-AS-STP-M10x99	80	10.5	M10	132	135	99	33	6	22	14	70	25	16	4	14	5100	131
516323	LV.FO-80-14-AS-STP-M12x44	80	10.5	M12	77	80	44	33	7	22	14	70	25	16	5	14	6800	127
516327	LV.FO-80-14-AS-STP-M12x69	80	10.5	M12	102	105	69	33	7	22	14	70	25	16	5	14	7000	131
516333	LV.FO-80-14-AS-STP-M12x99	80	10.5	M12	132	135	99	33	7	22	14	70	25	16	5	14	7000	135.5
516523	LV.FO-80-14-AS-STP-M16x69	80	10.5	M16	104	107	69	35	7	22	14	70	25	22	6	14	8000	140
516527	LV.FO-80-14-AS-STP-M16x109	80	10.5	M16	144	147	109	35	7	22	14	70	25	22	6	14	8000	150.5
516543	LV.FO-80-14-AS-STP-M16x149	80	10.5	M16	184	187	149	35	7	22	14	70	25	22	6	14	7000	161
516563	LV.FO-80-14-AS-STP-M16x169	80	10.5	M16	204	207	169	35	7	22	14	70	25	22	6	14	6000	166.5

* The max static load is the value above which the load applied to the element may cause some plastic material breakage, in particular conditions of use. Obviously, a factor that takes into consideration the importance and the safety level of the specific application must be applied to this value.