



ELESA Original design

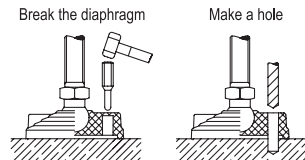


Fig.1

- 1
- 2
- 3
- 4
- 5
- 6
- 7
- 8
- 9
- 10
- 11
- 12
- 13
- 14
- 15
- 16
- 17
- 18
- 19

BASE

Glass-fibre reinforced polyamide based (PA) technopolymer, black colour, matte finish.

ARTICULATED STEM

Glass-fibre reinforced polyamide based (PA) SUPER-technopolymer, with hexagonal socket and regulation hexagon.

STANDARD EXECUTIONS

- LV.F-STP: without no-slip disk.
- LV.F-AS-STP: with NBR rubber no-slip disk, hardness 70 Shore A, supplied assembled to the base.

GROUND MOUNTING

By means of two holes at 180°, supplied covered by a diaphragm (which can be easily removed by a metal tool), to avoid all unhealthy deposits of dirt and dust when the ground mounting is not required (see Fig.1).

FEATURES AND APPLICATIONS

Thanks to the property of the SUPER-technopolymer stem, high rigidity and mechanical resistance are obtained in addition to natural resistance to corrosion.

The special knurling under the lower lip of the base provides excellent stability and grip when using the levelling element without no-slip disk even on surfaces that are not perfectly flat.

The particular assembling system of the no-slip disk to the base assures a perfect anchoring, preventing separation even in case of impact during transport or of adhesion (sticking) to the floor (see No-slip disks on page 835).

ORDER INFORMATION

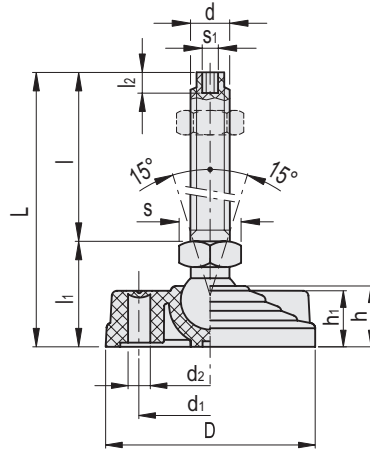
The levelling feet are supplied unassembled to make carriage and storage easier. The components (base and stem) are supplied in separate packing: less volume taken and better protection from scratches and dirt.

To order bases and stems separately, see:

- table of possible combinations Bases/Stems (see page 839)
- the codes of the Bases (see page 836)
- the codes of the Stems (see page ...).

ACCESSORIES ON REQUEST

NT. (see page -): AISI 304 stainless steel or zinc-plated steel nut.



Conversion Table 1 mm = 0.039 inch	
D	
mm	inch
80	3.12
100	3.90

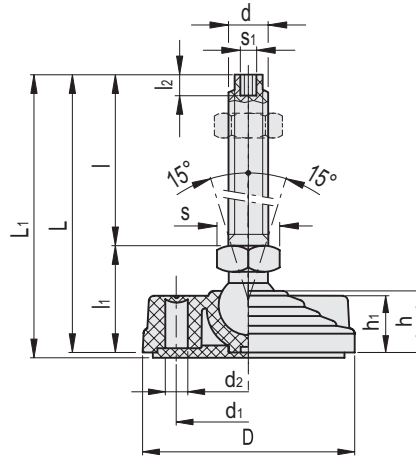
METRIC

LV.F-STP

Code	Description	D	d	L	l	l1	l2	d1	d2	h	h1	s	s1	Articulation Ø	Max. limit static load* [N]	⚖️
311123	LV.F-80-14-STP-M8x44	80	M8	79	44	35	5	54	8.5	24	23	16	3	14	2700	71
311127	LV.F-80-14-STP-M8x69	80	M8	104	69	35	5	54	8.5	24	23	16	3	14	2700	72
311223	LV.F-80-14-STP-M10x44	80	M10	79	44	35	6	54	8.5	24	23	16	4	14	4800	72
311227	LV.F-80-14-STP-M10x69	80	M10	104	69	35	6	54	8.5	24	23	16	4	14	5000	75
311233	LV.F-80-14-STP-M10x99	80	M10	134	99	35	6	54	8.5	24	23	16	4	14	5100	78
311323	LV.F-80-14-STP-M12x44	80	M12	79	44	35	7	54	8.5	24	23	16	5	14	6800	74
311327	LV.F-80-14-STP-M12x69	80	M12	104	69	35	7	54	8.5	24	23	16	5	14	7000	77
311333	LV.F-80-14-STP-M12x99	80	M12	134	99	35	7	54	8.5	24	23	16	5	14	7000	82
311523	LV.F-80-14-STP-M16x69	80	M16	106	69	37	7	54	8.5	24	23	22	6	14	8000	87
311527	LV.F-80-14-STP-M16x109	80	M16	146	109	37	7	54	8.5	24	23	22	6	14	8000	98
311543	LV.F-80-14-STP-M16x149	80	M16	186	149	37	7	54	8.5	24	23	22	6	14	7000	106
311563	LV.F-80-14-STP-M16x169	80	M16	206	169	37	7	54	8.5	24	23	22	6	14	6000	111
312452	LV.F-100-14-STP-M8x44	100	M8	79	44	35	5	70	12.5	24	23	16	3	14	2700	104
312454	LV.F-100-14-STP-M8x69	100	M8	104	69	35	5	70	12.5	24	23	16	3	14	2700	106
312462	LV.F-100-14-STP-M10x44	100	M10	79	44	35	6	70	12.5	24	23	16	4	14	4800	106
312464	LV.F-100-14-STP-M10x69	100	M10	104	69	35	6	70	12.5	24	23	16	4	14	5000	108
312466	LV.F-100-14-STP-M10x99	100	M10	134	99	35	6	70	12.5	24	23	16	4	14	5100	111
312472	LV.F-100-14-STP-M12x44	100	M12	79	44	35	7	70	12.5	24	23	16	5	14	6800	107
312474	LV.F-100-14-STP-M12x69	100	M12	104	69	35	7	70	12.5	24	23	16	5	14	7000	111
312476	LV.F-100-14-STP-M12x99	100	M12	134	99	35	7	70	12.5	24	23	16	5	14	7000	115
312482	LV.F-100-14-STP-M16x69	100	M16	106	69	37	7	70	12.5	24	23	22	6	14	8000	121
312484	LV.F-100-14-STP-M16x109	100	M16	146	109	37	7	70	12.5	24	23	22	6	14	8000	131
312486	LV.F-100-14-STP-M16x149	100	M16	186	149	37	7	70	12.5	24	23	22	6	14	7000	140
312488	LV.F-100-14-STP-M16x169	100	M16	206	169	37	7	70	12.5	24	23	22	6	14	6000	144

* The max static load is the value above which the load applied to the element may cause some plastic material breakage, in particular conditions of use. Obviously, a factor that takes into consideration the importance and the safety level of the specific application must be applied to this value.

- 1
- 2
- 3
- 4
- 5
- 6
- 7
- 8
- 9
- 10
- 11
- 12
- 13
- 14
- 15
- 16
- 17
- 18
- 19



Conversion Table
1 mm = 0.039 inch

D	
mm	inch
80	3.12
100	3.90

METRIC

LV.F-AS-STP

Code	Description	D	d	L	L1	l	l1	l2	d1	d2	h	h1	s	s1	Articulation Ø	Max. limit static load* [N]	⚖️
314123	LV.F-80-14-AS-STP-M8x44	80	M8	79	82	44	35	5	54	8.5	24	23	16	3	14	2700	92
314127	LV.F-80-14-AS-STP-M8x69	80	M8	104	107	69	35	5	54	8.5	24	23	16	3	14	2700	94
314223	LV.F-80-14-AS-STP-M10x44	80	M10	79	82	44	35	6	54	8.5	24	23	16	4	14	4800	94
314227	LV.F-80-14-AS-STP-M10x69	80	M10	104	107	69	35	6	54	8.5	24	23	16	4	14	5000	96
314233	LV.F-80-14-AS-STP-M10x99	80	M10	134	137	99	35	6	54	8.5	24	23	16	4	14	5100	99
314323	LV.F-80-14-AS-STP-M12x44	80	M12	79	82	44	35	7	54	8.5	24	23	16	5	14	6800	95
314327	LV.F-80-14-AS-STP-M12x69	80	M12	104	107	69	35	7	54	8.5	24	23	16	5	14	7000	99
314333	LV.F-80-14-AS-STP-M12x99	80	M12	134	137	99	35	7	54	8.5	24	23	16	5	14	7000	103
314523	LV.F-80-14-AS-STP-M16x69	80	M16	106	109	69	37	7	54	8.5	24	23	22	6	14	8000	109
314527	LV.F-80-14-AS-STP-M16x109	80	M16	146	149	109	37	7	54	8.5	24	23	22	6	14	8000	119
314543	LV.F-80-14-AS-STP-M16x149	80	M16	186	189	149	37	7	54	8.5	24	23	22	6	14	7000	128
314563	LV.F-80-14-AS-STP-M16x169	80	M16	206	209	169	37	7	54	8.5	24	23	22	6	14	6000	133
315452	LV.F-100-14-AS-STP-M8x44	100	M8	79	82	44	35	5	70	12.5	24	23	16	3	14	2700	146
315454	LV.F-100-14-AS-STP-M8x69	100	M8	104	107	69	35	5	70	12.5	24	23	16	3	14	2700	148
315462	LV.F-100-14-AS-STP-M10x44	100	M10	79	82	44	35	6	70	12.5	24	23	16	4	14	4800	148
315464	LV.F-100-14-AS-STP-M10x69	100	M10	104	107	69	35	6	70	12.5	24	23	16	4	14	5000	150
315466	LV.F-100-14-AS-STP-M10x99	100	M10	134	137	99	35	6	70	12.5	24	23	16	4	14	5100	153
315472	LV.F-100-14-AS-STP-M12x44	100	M12	79	82	44	35	7	70	12.5	24	23	16	5	14	6800	149
315474	LV.F-100-14-AS-STP-M12x69	100	M12	104	107	69	35	7	70	12.5	24	23	16	5	14	7000	153
315476	LV.F-100-14-AS-STP-M12x99	100	M12	134	137	99	35	7	70	12.5	24	23	16	5	14	7000	157
315482	LV.F-100-14-AS-STP-M16x69	100	M16	106	109	69	37	7	70	12.5	24	23	22	6	14	8000	163
315484	LV.F-100-14-AS-STP-M16x109	100	M16	146	149	109	37	7	70	12.5	24	23	22	6	14	8000	173
315486	LV.F-100-14-AS-STP-M16x149	100	M16	186	189	149	37	7	70	12.5	24	23	22	6	14	7000	182
315488	LV.F-100-14-AS-STP-M16x169	100	M16	206	209	169	37	7	70	12.5	24	23	22	6	14	6000	186

* The max static load is the value above which the load applied to the element may cause some plastic material breakage, in particular conditions of use. Obviously, a factor that takes into consideration the importance and the safety level of the specific application must be applied to this value.