

- 1
- 2
- 3
- 4
- 5
- 6
- 7
- 8
- 9
- 10
- 11
- 12
- 13
- 14
- 15
- 16
- 17
- 18
- 19

**BASE**

Glass-fibre reinforced polyamide based (PA) technopolymer, RAL 5005 blue colour, matte finish.  
Produced from FDA compliant raw material (FDA CFR.21 and EU 10/2011).

**ARTICULATED STEM**

Threaded AISI 304 stainless steel with regulation hexagon.

**STANDARD EXECUTIONS**

- **LV.F-SST-VD**: without no-slip disk.
- **LV.F-AS-SST-VD**: with NBR rubber no-slip disk, hardness 70 Shore A, supplied assembled to the base.

**GROUND MOUNTING**

By means of two holes at 180°, supplied covered by a diaphragm (which can be easily removed by a metal tool), to avoid all unhealthy deposits of dirt and dust when the ground mounting is not required (see Fig.1).

**FEATURES AND APPLICATIONS**

- The RAL 5005 blue colour is easily visible in case of accidental food contamination.
- The special knurling under the lower lip of the base provides excellent stability and grip when using the levelling element without no-slip disk even on surfaces that are not perfectly flat.
- The particular assembling system of the no-slip disk to the base assures a perfect anchoring, preventing separation even in case of impact during transport or of adhesion (sticking) to the floor (see No-slip disks on page 835).

**ORDER INFORMATION**

- The levelling elements are supplied unassembled to make carriage and storage easier. The components (base and stem) are supplied in separate packing: less volume taken and better protection from scratches and dirt.
- To order bases and stems separately, see:
- table of possible combinations Bases/Stems (see page 839)
  - the codes of the Bases (see page 836)
  - the codes of the Stems (see page 985).

**ACCESSORIES ON REQUEST**

AISI 304 stainless steel nut (see Nuts NT. on page 835).



ELESA Original design

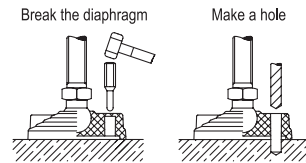
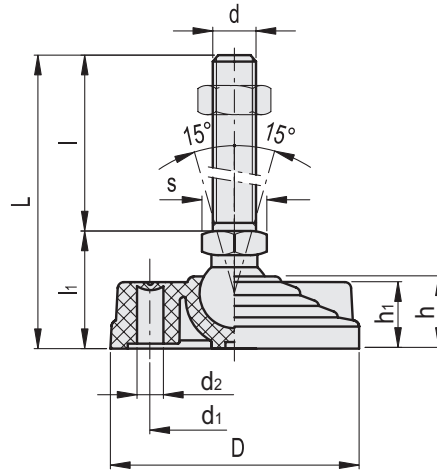


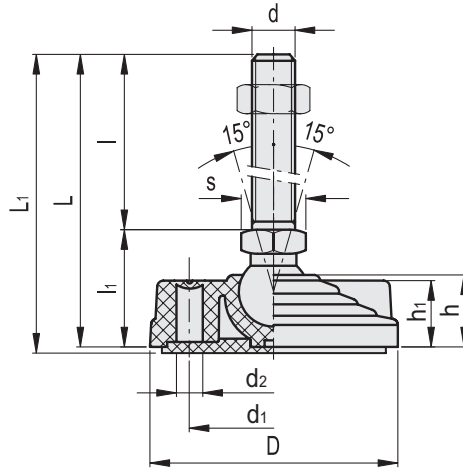
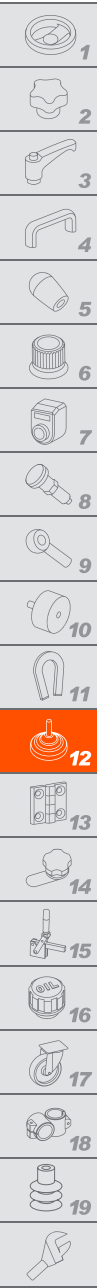
Fig.1



LV.F-SST-VD

Code	Description	D	d2A	L	l	l1	d1	d2	h	h1	s	Articulation Ø	Max. limit static load* [lbf]	⚖️
90185301	LV.F-80-14-SST-3/8-16X2-VD	3.15	3/8-16	3.30	2	1.30	2.13	0.33	0.94	0.91	9/16	0.55	3596.94	0.24
90185303	LV.F-80-14-SST-3/8-16X4-VD	3.15	3/8-16	5.30	4	1.30	2.13	0.33	0.94	0.91	9/16	0.55	3596.94	0.35
90185305	LV.F-80-14-SST-3/8-16X6-VD	3.15	3/8-16	7.30	6	1.30	2.13	0.33	0.94	0.91	9/16	0.55	3596.94	0.25
90185321	LV.F-80-14-SST-1/2-13X2-VD	3.15	1/2-13	3.30	2	1.30	2.13	0.33	0.94	0.91	9/16	0.55	3596.94	0.26
90185323	LV.F-80-14-SST-1/2-13X4-VD	3.15	1/2-13	5.30	4	1.30	2.13	0.33	0.94	0.91	9/16	0.55	3596.94	0.37
90185325	LV.F-80-14-SST-1/2-13X6-VD	3.15	1/2-13	7.30	6	1.30	2.13	0.33	0.94	0.91	9/16	0.55	3596.94	0.35
90185341	LV.F-80-14-SST-5/8-11X4-VD	3.15	5/8-11	5.30	4	1.30	2.13	0.33	0.94	0.91	5/8	0.55	3596.94	0.47
90185343	LV.F-80-14-SST-5/8-11X6-VD	3.15	5/8-11	7.30	6	1.30	2.13	0.33	0.94	0.91	5/8	0.55	3596.94	0.64
90185345	LV.F-80-14-SST-5/8-11X8-VD	3.15	5/8-11	9.30	8	1.30	2.13	0.33	0.94	0.91	5/8	0.55	3596.94	0.69
90185351	LV.F-80-24-SST-5/8-11X4-VD	3.15	5/8-11	5.69	4	1.69	2.13	0.33	0.94	0.91	15/16	0.94	4046.56	0.67
90185353	LV.F-80-24-SST-5/8-11X6-VD	3.15	5/8-11	7.69	6	1.69	2.13	0.33	0.94	0.91	15/16	0.94	4046.56	0.79
90185355	LV.F-80-24-SST-5/8-11X8-VD	3.15	5/8-11	9.69	8	1.69	2.13	0.33	0.94	0.91	15/16	0.94	4046.56	0.85
90185361	LV.F-80-24-SST-3/4-10X4-VD	3.15	3/4-10	5.69	4	1.69	2.13	0.33	0.94	0.91	15/16	0.94	4046.56	0.84
90185363	LV.F-80-24-SST-3/4-10X6-VD	3.15	3/4-10	7.69	6	1.69	2.13	0.33	0.94	0.91	15/16	0.94	4046.56	1.01
90185365	LV.F-80-24-SST-3/4-10X8-VD	3.15	3/4-10	9.69	8	1.69	2.13	0.33	0.94	0.91	15/16	0.94	4046.56	1.29
90185401	LV.F-100-14-SST-3/8-16X2-VD	3.94	3/8-16	3.30	2	1.30	2.76	0.49	0.94	0.91	9/16	0.55	4046.56	0.32
90185403	LV.F-100-14-SST-3/8-16X4-VD	3.94	3/8-16	5.30	4	1.30	2.76	0.49	0.94	0.91	9/16	0.55	4046.56	0.43
90185405	LV.F-100-14-SST-3/8-16X6-VD	3.94	3/8-16	7.30	6	1.30	2.76	0.49	0.94	0.91	9/16	0.55	4046.56	0.33
90185421	LV.F-100-14-SST-1/2-13X2-VD	3.94	1/2-13	3.30	2	1.30	2.76	0.49	0.94	0.91	9/16	0.55	4046.56	0.34
90185423	LV.F-100-14-SST-1/2-13X4-VD	3.94	1/2-13	5.30	4	1.30	2.76	0.49	0.94	0.91	9/16	0.55	4046.56	0.44
90185425	LV.F-100-14-SST-1/2-13X6-VD	3.94	1/2-13	7.30	6	1.30	2.76	0.49	0.94	0.91	9/16	0.55	4046.56	0.43
90185441	LV.F-100-14-SST-5/8-11X4-VD	3.94	5/8-11	5.30	4	1.30	2.76	0.49	0.94	0.91	5/8	0.55	4046.56	0.55
90185443	LV.F-100-14-SST-5/8-11X6-VD	3.94	5/8-11	7.30	6	1.30	2.76	0.49	0.94	0.91	5/8	0.55	4046.56	0.71
90185445	LV.F-100-14-SST-5/8-11X8-VD	3.94	5/8-11	9.30	8	1.30	2.76	0.49	0.94	0.91	5/8	0.55	4046.56	0.77
90185451	LV.F-100-24-SST-5/8-11X4-VD	3.94	5/8-11	5.69	4	1.69	2.76	0.49	0.94	0.91	15/16	0.94	5620.22	0.75
90185453	LV.F-100-24-SST-5/8-11X6-VD	3.94	5/8-11	7.69	6	1.69	2.76	0.49	0.94	0.91	15/16	0.94	5620.22	0.86
90185455	LV.F-100-24-SST-5/8-11X8-VD	3.94	5/8-11	9.69	8	1.69	2.76	0.49	0.94	0.91	15/16	0.94	5620.22	0.92
90185461	LV.F-100-24-SST-3/4-10X4-VD	3.94	3/4-10	5.69	4	1.69	2.76	0.49	0.94	0.91	15/16	0.94	5620.22	0.91
90185463	LV.F-100-24-SST-3/4-10X6-VD	3.94	3/4-10	7.69	6	1.69	2.76	0.49	0.94	0.91	15/16	0.94	5620.22	1.08
90185465	LV.F-100-24-SST-3/4-10X8-VD	3.94	3/4-10	9.69	8	1.69	2.76	0.49	0.94	0.91	15/16	0.94	5620.22	1.36
90185501	LV.F-125-24-SST-5/8-11X4-VD	4.92	5/8-11	6.64	4	2.64	3.74	0.49	1.81	0.91	15/16	0.94	6294.65	0.97
90185503	LV.F-125-24-SST-5/8-11X6-VD	4.92	5/8-11	8.64	6	2.64	3.74	0.49	1.81	0.91	15/16	0.94	6294.65	1.08
90185505	LV.F-125-24-SST-5/8-11X8-VD	4.92	5/8-11	10.64	8	2.64	3.74	0.49	1.81	0.91	15/16	0.94	6294.65	1.15
90185511	LV.F-125-24-SST-3/4-10X4-VD	4.92	3/4-10	6.64	4	2.64	3.74	0.49	1.81	0.91	15/16	0.94	6294.65	1.14
90185513	LV.F-125-24-SST-3/4-10X6-VD	4.92	3/4-10	8.64	6	2.64	3.74	0.49	1.81	0.91	15/16	0.94	6294.65	1.31
90185515	LV.F-125-24-SST-3/4-10X8-VD	4.92	3/4-10	10.64	8	2.64	3.74	0.49	1.81	0.91	15/16	0.94	6294.65	1.59

\* The max static load is the value above which the load applied to the element may cause some plastic material breakage, in particular conditions of use. Obviously, a factor that takes into consideration the importance and the safety level of the specific application must be applied to this value.



LV.F-AS-SST-VD

Code	Description	D	d2A	L	L1	l	l1	d1	d2	h	h1	s	Articulation ∅	Max. limit static load* [lbf]	⚖
90186301	LV.F-80-14-AS-SST-3/8-16X2-VD	3.15	3/8-16	3.30	3.42	2	1.30	2.13	0.33	0.94	0.91	9/16	0.55	3596.94	0.29
90186303	LV.F-80-14-AS-SST-3/8-16X4-VD	3.15	3/8-16	5.30	5.42	4	1.30	2.13	0.33	0.94	0.91	9/16	0.55	3596.94	0.39
90186305	LV.F-80-14-AS-SST-3/8-16X6-VD	3.15	3/8-16	7.30	7.42	6	1.30	2.13	0.33	0.94	0.91	9/16	0.55	3596.94	0.29
90186321	LV.F-80-14-AS-SST-1/2-13X2-VD	3.15	1/2-13	3.30	3.42	2	1.30	2.13	0.33	0.94	0.91	9/16	0.55	3596.94	0.31
90186323	LV.F-80-14-AS-SST-1/2-13X4-VD	3.15	1/2-13	5.30	5.42	4	1.30	2.13	0.33	0.94	0.91	9/16	0.55	3596.94	0.41
90186325	LV.F-80-14-AS-SST-1/2-13X6-VD	3.15	1/2-13	7.30	7.42	6	1.30	2.13	0.33	0.94	0.91	9/16	0.55	3596.94	0.39
90186341	LV.F-80-14-AS-SST-5/8-11X4-VD	3.15	5/8-11	5.30	5.42	4	1.30	2.13	0.33	0.94	0.91	5/8	0.55	3596.94	0.52
90186343	LV.F-80-14-AS-SST-5/8-11X6-VD	3.15	5/8-11	7.30	7.42	6	1.30	2.13	0.33	0.94	0.91	5/8	0.55	3596.94	0.68
90186345	LV.F-80-14-AS-SST-5/8-11X8-VD	3.15	5/8-11	9.30	9.42	8	1.30	2.13	0.33	0.94	0.91	5/8	0.55	3596.94	0.74
90186351	LV.F-80-24-AS-SST-5/8-11X4-VD	3.15	5/8-11	5.69	5.81	4	1.69	2.13	0.33	0.94	0.91	15/16	0.94	4046.56	0.72
90186353	LV.F-80-24-AS-SST-5/8-11X6-VD	3.15	5/8-11	7.69	7.81	6	1.69	2.13	0.33	0.94	0.91	15/16	0.94	4046.56	0.84
90186355	LV.F-80-24-AS-SST-5/8-11X8-VD	3.15	5/8-11	9.69	9.81	8	1.69	2.13	0.33	0.94	0.91	15/16	0.94	4046.56	0.90
90186361	LV.F-80-24-AS-SST-3/4-10X4-VD	3.15	3/4-10	5.69	5.81	4	1.69	2.13	0.33	0.94	0.91	15/16	0.94	4046.56	0.89
90186363	LV.F-80-24-AS-SST-3/4-10X6-VD	3.15	3/4-10	7.69	7.81	6	1.69	2.13	0.33	0.94	0.91	15/16	0.94	4046.56	1.06
90186365	LV.F-80-24-AS-SST-3/4-10X8-VD	3.15	3/4-10	9.69	9.81	8	1.69	2.13	0.33	0.94	0.91	15/16	0.94	4046.56	1.34
90186401	LV.F-100-14-AS-SST-3/8-16X2-VD	3.94	3/8-16	3.30	3.42	2	1.30	2.76	0.49	0.94	0.91	9/16	0.55	4046.56	0.41
90186403	LV.F-100-14-AS-SST-3/8-16X4-VD	3.94	3/8-16	5.30	5.42	4	1.30	2.76	0.49	0.94	0.91	9/16	0.55	4046.56	0.52
90186405	LV.F-100-14-AS-SST-3/8-16X6-VD	3.94	3/8-16	7.30	7.42	6	1.30	2.76	0.49	0.94	0.91	9/16	0.55	4046.56	0.42
90186421	LV.F-100-14-AS-SST-1/2-13X2-VD	3.94	1/2-13	3.30	3.42	2	1.30	2.76	0.49	0.94	0.91	9/16	0.55	4046.56	0.43
90186423	LV.F-100-14-AS-SST-1/2-13X4-VD	3.94	1/2-13	5.30	5.42	4	1.30	2.76	0.49	0.94	0.91	9/16	0.55	4046.56	0.53
90186425	LV.F-100-14-AS-SST-1/2-13X6-VD	3.94	1/2-13	7.30	7.42	6	1.30	2.76	0.49	0.94	0.91	9/16	0.55	4046.56	0.52
90186441	LV.F-100-14-AS-SST-5/8-11X4-VD	3.94	5/8-11	5.30	5.42	4	1.30	2.76	0.49	0.94	0.91	5/8	0.55	4046.56	0.64
90186443	LV.F-100-14-AS-SST-5/8-11X6-VD	3.94	5/8-11	7.30	7.42	6	1.30	2.76	0.49	0.94	0.91	5/8	0.55	4046.56	0.81
90186445	LV.F-100-14-AS-SST-5/8-11X8-VD	3.94	5/8-11	9.30	9.42	8	1.30	2.76	0.49	0.94	0.91	5/8	0.55	4046.56	0.86
90186451	LV.F-100-24-AS-SST-5/8-11X4-VD	3.94	5/8-11	5.69	5.81	4	1.69	2.76	0.49	0.94	0.91	15/16	0.94	5620.22	0.84
90186453	LV.F-100-24-AS-SST-5/8-11X6-VD	3.94	5/8-11	7.69	7.81	6	1.69	2.76	0.49	0.94	0.91	15/16	0.94	5620.22	0.95
90186455	LV.F-100-24-AS-SST-5/8-11X8-VD	3.94	5/8-11	9.69	9.81	8	1.69	2.76	0.49	0.94	0.91	15/16	0.94	5620.22	1.01
90186461	LV.F-100-24-AS-SST-3/4-10X4-VD	3.94	3/4-10	5.69	5.81	4	1.69	2.76	0.49	0.94	0.91	15/16	0.94	5620.22	1.01
90186463	LV.F-100-24-AS-SST-3/4-10X6-VD	3.94	3/4-10	7.69	7.81	6	1.69	2.76	0.49	0.94	0.91	15/16	0.94	5620.22	1.18
90186465	LV.F-100-24-AS-SST-3/4-10X8-VD	3.94	3/4-10	9.69	9.81	8	1.69	2.76	0.49	0.94	0.91	15/16	0.94	5620.22	1.46
90186501	LV.F-125-24-AS-SST-5/8-11X4-VD	4.92	5/8-11	6.64	6.76	4	2.64	3.74	0.49	1.81	0.91	15/16	0.94	6294.65	1.15
90186503	LV.F-125-24-AS-SST-5/8-11X6-VD	4.92	5/8-11	8.64	8.76	6	2.64	3.74	0.49	1.81	0.91	15/16	0.94	6294.65	1.27
90186505	LV.F-125-24-AS-SST-5/8-11X8-VD	4.92	5/8-11	10.64	10.76	8	2.64	3.74	0.49	1.81	0.91	15/16	0.94	6294.65	1.32
90186511	LV.F-125-24-AS-SST-3/4-10X4-VD	4.92	3/4-10	6.64	6.76	4	2.64	3.74	0.49	1.81	0.91	15/16	0.94	6294.65	1.32
90186513	LV.F-125-24-AS-SST-3/4-10X6-VD	4.92	3/4-10	8.64	8.76	6	2.64	3.74	0.49	1.81	0.91	15/16	0.94	6294.65	1.49
90186515	LV.F-125-24-AS-SST-3/4-10X8-VD	4.92	3/4-10	10.64	10.76	8	2.64	3.74	0.49	1.81	0.91	15/16	0.94	6294.65	1.77

\* The max static load is the value above which the load applied to the element may cause some plastic material breakage, in particular conditions of use. Obviously, a factor that takes into consideration the importance and the safety level of the specific application must be applied to this value.