

# LSQ.A-SST-VD | Adjustable feet

Visually Detectable technopolymer base, stainless steel stem



METRIC



ELESA Original design

- 1
- 2
- 3
- 4
- 5
- 6
- 7
- 8
- 9
- 10
- 11
- 12
- 13
- 14
- 15
- 16
- 17
- 18
- 19

## BASE

Glass-fibre reinforced polyamide based (PA) technopolymer, RAL 5005 blue colour, matte finish.

Produced from FDA compliant raw material (FDA CFR.21 and EU 10/2011).

## ARTICULATED STEM

Threaded AISI 304 stainless steel with regulation hexagon.

## STANDARD EXECUTIONS

- **LSQ.A-SST-VD**: without no-slip disk.
- **LSQ.A-AS-SST-VD**: with NBR rubber no-slip disk, hardness 70 Shore A, supplied assembled to the base.

## FEATURES AND APPLICATIONS

The RAL 5005 blue colour is easily visible in case of accidental food contamination.

The particular assembling system of the no-slip disk to the base assures a perfect anchoring, preventing separation even in case of impact during transport or of adhesion (sticking) to the floor (see No-slip disks on page 835).

## ORDER INFORMATION

The levelling feet are supplied unassembled to make carriage and storage easier. The components (base and stem) are supplied in separate packing: less volume taken and better protection from scratches and dirt.

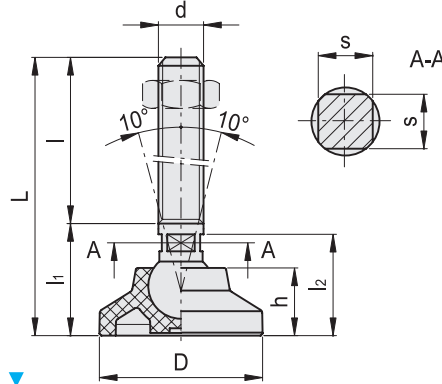
To order bases and stems separately, see:

- table of possible combinations Bases/Stems (see page 839)
- the codes of the Bases (see page 836)
- the codes of the Stems (see page 840).

## ACCESSORIES ON REQUEST

AISI 304 stainless steel nut (see Nuts NT. on page 835).

Conversion Table 1 mm = 0.039 inch	
D	
mm	inch
25	0.98
32	1.25
40	1.56
50	1.95
60	2.34



INOX STAINLESS STEEL METRIC

LSQ.A-SST-VD

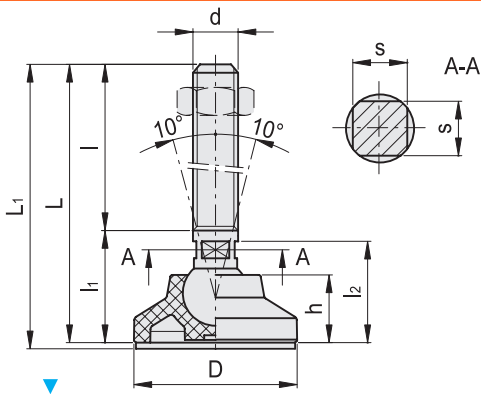
Code	Description	D	d	L	l1	l2	h	s	Articulation Ø	Max. limit static load* [N]	🔗	
187061	LSQ.A-25-8.5-SST-M8x48-VD	25	M8	68	48	20	18.5	12	7	8.5	5000	24
187063	LSQ.A-25-8.5-SST-M8x73-VD	25	M8	93	73	20	18.5	12	7	8.5	5000	34
187071	LSQ.A-25-8.5-SST-M10x48-VD	25	M10	68	48	20	18.5	12	7	8.5	5000	31
187073	LSQ.A-25-8.5-SST-M10x73-VD	25	M10	93	73	20	18.5	12	7	8.5	5000	47
187075	LSQ.A-25-8.5-SST-M10x103-VD	25	M10	123	103	20	18.5	12	7	8.5	5000	65
187081	LSQ.A-25-8.5-SST-M12x48-VD	25	M12	68	48	20	18.5	12	9	8.5	5000	42
187083	LSQ.A-25-8.5-SST-M12x73-VD	25	M12	93	73	20	18.5	12	9	8.5	5000	64
187085	LSQ.A-25-8.5-SST-M12x103-VD	25	M12	123	103	20	18.5	12	9	8.5	5000	95
187151	LSQ.A-25-14-SST-M16x68-VD	25	M16	92	68	24	22.5	12	12	14	5000	100
187153	LSQ.A-25-14-SST-M16x108-VD	25	M16	132	108	24	22.5	12	12	14	5000	164
187155	LSQ.A-25-14-SST-M16x148-VD	25	M16	172	148	24	22.5	12	12	14	5000	228
187157	LSQ.A-25-14-SST-M16x168-VD	25	M16	192	168	24	22.5	12	12	14	5000	260
187161	LSQ.A-32-8.5-SST-M8x48-VD	32	M8	71	48	23	21.5	15	7	8.5	6000	28
187163	LSQ.A-32-8.5-SST-M8x73-VD	32	M8	96	73	23	21.5	15	7	8.5	6000	38
187171	LSQ.A-32-8.5-SST-M10x48-VD	32	M10	71	48	23	21.5	15	7	8.5	6000	35
187173	LSQ.A-32-8.5-SST-M10x73-VD	32	M10	96	73	23	21.5	15	7	8.5	6000	51
187175	LSQ.A-32-8.5-SST-M10x103-VD	32	M10	126	103	23	21.5	15	7	8.5	6000	69
187181	LSQ.A-32-8.5-SST-M12x48-VD	32	M12	71	48	23	21.5	15	9	8.5	6000	46
187183	LSQ.A-32-8.5-SST-M12x73-VD	32	M12	96	73	23	21.5	15	9	8.5	6000	68
187185	LSQ.A-32-8.5-SST-M12x103-VD	32	M12	126	103	23	21.5	15	9	8.5	6000	99
187251	LSQ.A-32-14-SST-M16x68-VD	32	M16	92	68	24	22.5	15	12	14	7000	104
187253	LSQ.A-32-14-SST-M16x108-VD	32	M16	132	108	24	22.5	15	12	14	7000	168
187255	LSQ.A-32-14-SST-M16x148-VD	32	M16	172	148	24	22.5	15	12	14	7000	232
187257	LSQ.A-32-14-SST-M16x168-VD	32	M16	192	168	24	22.5	15	12	14	7000	264
187261	LSQ.A-40-8.5-SST-M8x48-VD	40	M8	73	48	25	23.5	17	7	8.5	7000	33
187263	LSQ.A-40-8.5-SST-M8x73-VD	40	M8	98	73	25	23.5	17	7	8.5	7000	43
187271	LSQ.A-40-8.5-SST-M10x48-VD	40	M10	73	48	25	23.5	17	7	8.5	7000	40
187273	LSQ.A-40-8.5-SST-M10x73-VD	40	M10	98	73	25	23.5	17	7	8.5	7000	56
187275	LSQ.A-40-8.5-SST-M10x103-VD	40	M10	128	103	25	23.5	17	7	8.5	7000	74
187281	LSQ.A-40-8.5-SST-M12x48-VD	40	M12	73	48	25	23.5	17	9	8.5	7000	51
187283	LSQ.A-40-8.5-SST-M12x73-VD	40	M12	98	73	25	23.5	17	9	8.5	7000	73
187285	LSQ.A-40-8.5-SST-M12x103-VD	40	M12	128	103	25	23.5	17	9	8.5	7000	104
187351	LSQ.A-40-14-SST-M16x68-VD	40	M16	93	68	25	23.5	17	12	14	10000	109
187353	LSQ.A-40-14-SST-M16x108-VD	40	M16	133	108	25	23.5	17	12	14	10000	173
187355	LSQ.A-40-14-SST-M16x148-VD	40	M16	173	148	25	23.5	17	12	14	10000	237
187357	LSQ.A-40-14-SST-M16x168-VD	40	M16	193	168	25	23.5	17	12	14	10000	269
187361	LSQ.A-50-8.5-SST-M8x48-VD	50	M8	75	48	27	25.5	19	7	8.5	7000	39
187363	LSQ.A-50-8.5-SST-M8x73-VD	50	M8	100	73	27	25.5	19	7	8.5	7000	49
187371	LSQ.A-50-8.5-SST-M10x48-VD	50	M10	75	48	27	25.5	19	7	8.5	7000	46
187373	LSQ.A-50-8.5-SST-M10x73-VD	50	M10	100	73	27	25.5	19	7	8.5	7000	62
187375	LSQ.A-50-8.5-SST-M10x103-VD	50	M10	130	103	27	25.5	19	7	8.5	7000	80
187381	LSQ.A-50-8.5-SST-M12x48-VD	50	M12	75	48	27	25.5	19	9	8.5	7000	57
187383	LSQ.A-50-8.5-SST-M12x73-VD	50	M12	100	73	27	25.5	19	9	8.5	7000	79
187385	LSQ.A-50-8.5-SST-M12x103-VD	50	M12	130	103	27	25.5	19	9	8.5	7000	110
187451	LSQ.A-50-14-SST-M16x68-VD	50	M16	95	68	27	25.5	19	12	14	10000	115
187453	LSQ.A-50-14-SST-M16x108-VD	50	M16	135	108	27	25.5	19	12	14	10000	179
187455	LSQ.A-50-14-SST-M16x148-VD	50	M16	175	148	27	25.5	19	12	14	10000	243
187457	LSQ.A-50-14-SST-M16x168-VD	50	M16	195	168	27	25.5	19	12	14	10000	275
187581	LSQ.A-60-14-SST-M16x68-VD	60	M16	104	68	36	34.5	24	12	14	14000	130
187583	LSQ.A-60-14-SST-M16x108-VD	60	M16	144	108	36	34.5	24	12	14	14000	182
187585	LSQ.A-60-14-SST-M16x148-VD	60	M16	184	148	36	34.5	24	12	14	14000	235
187587	LSQ.A-60-14-SST-M16x168-VD	60	M16	204	168	36	34.5	24	12	14	14000	261
187591	LSQ.A-60-14-SST-M20x110-VD	60	M20	151	110	41	38.5	24	15	14	14000	282
187593	LSQ.A-60-14-SST-M20x150-VD	60	M20	191	150	41	38.5	24	15	14	14000	362
187595	LSQ.A-60-14-SST-M20x170-VD	60	M20	211	170	41	38.5	24	15	14	14000	405
187597	LSQ.A-60-14-SST-M20x210-VD	60	M20	251	210	41	38.5	24	15	14	14000	486

\* The max static load is the value above which the load applied to the element may cause some plastic material breakage, in particular conditions of use. Obviously, a factor that takes into consideration the importance and the safety level of the specific application must be applied to this value.



- 1
- 2
- 3
- 4
- 5
- 6
- 7
- 8
- 9
- 10
- 11
- 12
- 13
- 14
- 15
- 16
- 17
- 18
- 19

Conversion Table	
1 mm = 0.039 inch	
D	
mm	inch
25	0.98
32	1.25
40	1.56
50	1.95
60	2.34



LSQ.A-AS-SST-VD

Code	Description	D	d	L	L1	l	l1	l2	h	s	Articulation Ø	Max. limit static load* [N]	⚖️
188061	LSQ.A-25-8.5-AS-SST-M8x48-VD	25	M8	68	71	48	20	18.5	12	7	8.5	5000	26
188063	LSQ.A-25-8.5-AS-SST-M8x73-VD	25	M8	93	96	73	20	18.5	12	7	8.5	5000	36
188071	LSQ.A-25-8.5-AS-SST-M10x48-VD	25	M10	68	71	48	20	18.5	12	7	8.5	5000	33
188073	LSQ.A-25-8.5-AS-SST-M10x73-VD	25	M10	93	96	73	20	18.5	12	7	8.5	5000	49
188075	LSQ.A-25-8.5-AS-SST-M10x103-VD	25	M10	123	126	103	20	18.5	12	7	8.5	5000	67
188081	LSQ.A-25-8.5-AS-SST-M12x48-VD	25	M12	68	71	48	20	18.5	12	9	8.5	5000	44
188083	LSQ.A-25-8.5-AS-SST-M12x73-VD	25	M12	93	96	73	20	18.5	12	9	8.5	5000	66
188085	LSQ.A-25-8.5-AS-SST-M12x103-VD	25	M12	123	126	103	20	18.5	12	9	8.5	5000	97
188151	LSQ.A-25-14-AS-SST-M16x68-VD	25	M16	92	95	68	24	22.5	12	12	14	5000	102
188153	LSQ.A-25-14-AS-SST-M16x108-VD	25	M16	132	135	108	24	22.5	12	12	14	5000	166
188155	LSQ.A-25-14-AS-SST-M16x148-VD	25	M16	172	175	148	24	22.5	12	12	14	5000	230
188157	LSQ.A-25-14-AS-SST-M16x168-VD	25	M16	192	195	168	24	22.5	12	12	14	5000	262
188161	LSQ.A-32-8.5-AS-SST-M8x48-VD	32	M8	71	74	48	23	21.5	15	7	8.5	6000	32
188163	LSQ.A-32-8.5-AS-SST-M8x73-VD	32	M8	96	99	73	23	21.5	15	7	8.5	6000	42
188171	LSQ.A-32-8.5-AS-SST-M10x48-VD	32	M10	71	74	48	23	21.5	15	7	8.5	6000	39
188173	LSQ.A-32-8.5-AS-SST-M10x73-VD	32	M10	96	99	73	23	21.5	15	7	8.5	6000	55
188175	LSQ.A-32-8.5-AS-SST-M10x103-VD	32	M10	126	129	103	23	21.5	15	7	8.5	6000	73
188181	LSQ.A-32-8.5-AS-SST-M12x48-VD	32	M12	71	74	48	23	21.5	15	9	8.5	6000	50
188183	LSQ.A-32-8.5-AS-SST-M12x73-VD	32	M12	96	99	73	23	21.5	15	9	8.5	6000	72
188185	LSQ.A-32-8.5-AS-SST-M12x103-VD	32	M12	126	129	103	23	21.5	15	9	8.5	6000	103
188251	LSQ.A-32-14-AS-SST-M16x68-VD	32	M16	92	95	68	24	22.5	15	12	14	7000	108
188253	LSQ.A-32-14-AS-SST-M16x108-VD	32	M16	132	135	108	24	22.5	15	12	14	7000	172
188255	LSQ.A-32-14-AS-SST-M16x148-VD	32	M16	172	175	148	24	22.5	15	12	14	7000	236
188257	LSQ.A-32-14-AS-SST-M16x168-VD	32	M16	192	195	168	24	22.5	15	12	14	7000	268
188261	LSQ.A-40-8.5-AS-SST-M8x48-VD	40	M8	73	76	48	25	23.5	17	7	8.5	7000	40
188263	LSQ.A-40-8.5-AS-SST-M8x73-VD	40	M8	98	101	73	25	23.5	17	7	8.5	7000	50
188271	LSQ.A-40-8.5-AS-SST-M10x48-VD	40	M10	73	76	48	25	23.5	17	7	8.5	7000	47
188273	LSQ.A-40-8.5-AS-SST-M10x73-VD	40	M10	98	101	73	25	23.5	17	7	8.5	7000	63
188275	LSQ.A-40-8.5-AS-SST-M10x103-VD	40	M10	128	131	103	25	23.5	17	7	8.5	7000	81
188281	LSQ.A-40-8.5-AS-SST-M12x48-VD	40	M12	73	76	48	25	23.5	17	9	8.5	7000	58
188283	LSQ.A-40-8.5-AS-SST-M12x73-VD	40	M12	98	101	73	25	23.5	17	9	8.5	7000	80
188285	LSQ.A-40-8.5-AS-SST-M12x103-VD	40	M12	128	131	103	25	23.5	17	9	8.5	7000	111
188351	LSQ.A-40-14-AS-SST-M16x68-VD	40	M16	93	96	68	25	23.5	17	12	14	10000	116
188353	LSQ.A-40-14-AS-SST-M16x108-VD	40	M16	133	136	108	25	23.5	17	12	14	10000	180
188355	LSQ.A-40-14-AS-SST-M16x148-VD	40	M16	173	176	148	25	23.5	17	12	14	10000	244
188357	LSQ.A-40-14-AS-SST-M16x168-VD	40	M16	193	196	168	25	23.5	17	12	14	10000	276
188361	LSQ.A-50-8.5-AS-SST-M8x48-VD	50	M8	75	78	48	27	25.5	19	7	8.5	7000	51
188363	LSQ.A-50-8.5-AS-SST-M8x73-VD	50	M8	100	103	73	27	25.5	19	7	8.5	7000	61
188371	LSQ.A-50-8.5-AS-SST-M10x48-VD	50	M10	75	78	48	27	25.5	19	7	8.5	7000	58
188373	LSQ.A-50-8.5-AS-SST-M10x73-VD	50	M10	100	103	73	27	25.5	19	7	8.5	7000	74
188375	LSQ.A-50-8.5-AS-SST-M10x103-VD	50	M10	130	133	103	27	25.5	19	7	8.5	7000	92
188381	LSQ.A-50-8.5-AS-SST-M12x48-VD	50	M12	75	78	48	27	25.5	19	9	8.5	7000	69
188383	LSQ.A-50-8.5-AS-SST-M12x73-VD	50	M12	100	103	73	27	25.5	19	9	8.5	7000	91
188385	LSQ.A-50-8.5-AS-SST-M12x103-VD	50	M12	130	133	103	27	25.5	19	9	8.5	7000	122
188451	LSQ.A-50-14-AS-SST-M16x68-VD	50	M16	95	98	68	27	25.5	19	12	14	10000	127
188453	LSQ.A-50-14-AS-SST-M16x108-VD	50	M16	135	138	108	27	25.5	19	12	14	10000	191
188455	LSQ.A-50-14-AS-SST-M16x148-VD	50	M16	175	178	148	27	25.5	19	12	14	10000	255
188457	LSQ.A-50-14-AS-SST-M16x168-VD	50	M16	195	198	168	27	25.5	19	12	14	10000	287
188581	LSQ.A-60-14-AS-SST-M16x68-VD	60	M16	104	107	68	36	34.5	24	12	14	14000	130
188583	LSQ.A-60-14-AS-SST-M16x108-VD	60	M16	144	147	108	36	34.5	24	12	14	14000	182
188585	LSQ.A-60-14-AS-SST-M16x148-VD	60	M16	184	187	148	36	34.5	24	12	14	14000	235
188587	LSQ.A-60-14-AS-SST-M16x168-VD	60	M16	204	207	168	36	34.5	24	12	14	14000	261
188591	LSQ.A-60-14-AS-SST-M20x110-VD	60	M20	151	154	110	41	38.5	24	15	14	14000	282
188593	LSQ.A-60-14-AS-SST-M20x150-VD	60	M20	191	194	150	41	38.5	24	15	14	14000	362
188595	LSQ.A-60-14-AS-SST-M20x170-VD	60	M20	211	214	170	41	38.5	24	15	14	14000	405
188597	LSQ.A-60-14-AS-SST-M20x210-VD	60	M20	251	254	210	41	38.5	24	15	14	14000	486

\* The max static load is the value above which the load applied to the element may cause some plastic material breakage, in particular conditions of use. Obviously, a factor that takes into consideration the importance and the safety level of the specific application must be applied to this value.