

- 1
- 2
- 3
- 4
- 5
- 6
- 7
- 8
- 9
- 10
- 11
- 12
- 13
- 14
- 15
- 16
- 17
- 18

**STANDARD EXECUTIONS**

Zinc-plated steel base and joint with hole or threaded stem and nut.  
 - **LM-TR (d)**: with threaded blind hole.  
 - **LM-TR (d - l)**: with threaded stem.

**NON-SLIP DISK**

Thermoplastic elastomer (TPE).

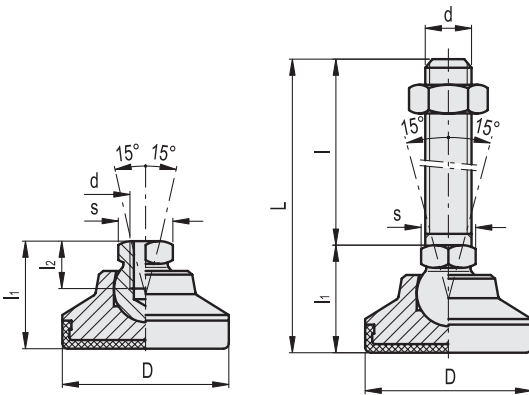
**FEATURES**

The resistance of the levelling element to a static load is obviously limited by the load capacity of the stem.  
 The static load values in the table below refer to the resistance to a load applied on the axis of the levelling foot.  
 Under common working conditions, side or angular loading increases the stress on the stem and reduces its load capacity.  
 To increase the applicable load you can use the ball joint with threaded hole by inserting a steel threaded bar of higher resistance class. We recommend to insert a pressure pad between the end of the bar and the bottom of the threaded hole to reduce loading on the threading.



LM-TR (d)

LM-TR (d - l)



Conversion Table	
1 mm = 0.039 inch	
D	
mm	inch
25	0.98
32	1.25
40	1.56
50	1.95
60	2.34

**LM-TR (d)**

METRIC

Code	Description	D	d	l1	l2	s	Max. limit static load [N]	⚖️
401220	LM.25 M6-TR	25	M6	20.5	9	12	7500	40
401221	LM.25 M8-TR	25	M8	20.5	9	12	14000	35
401230	LM.32 M8-TR	32	M8	24.5	9	12	14000	85
401231	LM.32 M10-TR	32	M10	24.5	10.5	15	23000	75
401240	LM.40 M10-TR	40	M10	27.5	10.5	15	23000	120
401241	LM.40 M12-TR	40	M12	27.5	11.5	17	33000	110
401250	LM.50 M10-TR	50	M10	29.5	10.5	15	23000	170
401251	LM.50 M12-TR	50	M12	29.5	11.5	17	33000	160
401260	LM.60 M12-TR	60	M12	37.5	11.5	17	33000	335
401261	LM.60 M16-TR	60	M16	37.5	16	24	62000	320

LM-TR (d - l)

METRIC

Code	Description	D	d	L	l	l1	s	Max. limit static load [N]	⚖️
401713	LM.25 M6x40-TR	25	M6	60.5	40	20.5	12	7500	39
401714	LM.25 M6x50-TR	25	M6	70.5	50	20.5	12	7500	41
401715	LM.25 M6x63-TR	25	M6	83.5	63	20.5	12	7500	45
401723	LM.25 M8x40-TR	25	M8	60.5	40	20.5	12	14000	66
401724	LM.25 M8x50-TR	25	M8	70.5	50	20.5	12	14000	50
401726	LM.25 M8x63-TR	25	M8	83.5	63	20.5	12	14000	70
401716	LM.25 M10x50-TR	25	M10	70.5	50	20.5	12	23000	54
401717	LM.25 M10x63-TR	25	M10	83.5	63	20.5	12	23000	64
401718	LM.25 M10x80-TR	25	M10	100.5	80	20.5	12	23000	76
401730	LM.32 M8x40-TR	32	M8	64.5	40	24.5	12	14000	52
401731	LM.32 M8x50-TR	32	M8	74.5	50	24.5	12	14000	57
401732	LM.32 M8x63-TR	32	M8	87.5	63	24.5	12	14000	67
401733	LM.32 M10x50-TR	32	M10	74.5	50	24.5	15	23000	106
401734	LM.32 M10x63-TR	32	M10	87.5	63	24.5	15	23000	112
401736	LM.32 M10x80-TR	32	M10	104.5	80	24.5	15	23000	120
401727	LM.32 M12x63-TR	32	M12	87.5	63	24.5	15	33000	166
401728	LM.32 M12x80-TR	32	M12	104.5	80	24.5	15	33000	183
401729	LM.32 M12x100-TR	32	M12	124.5	100	24.5	15	33000	201
401737	LM.40 M8x50-TR	40	M8	77.5	50	27.5	15	14000	142
401738	LM.40 M8x63-TR	40	M8	90.5	63	27.5	15	14000	150
401739	LM.40 M8x80-TR	40	M8	107.5	80	27.5	15	14000	158
401740	LM.40 M10x50-TR	40	M10	77.5	50	27.5	15	23000	157
401741	LM.40 M10x63-TR	40	M10	90.5	63	27.5	15	23000	165
401742	LM.40 M10x80-TR	40	M10	107.5	80	27.5	15	23000	172
401743	LM.40 M12x63-TR	40	M12	90.5	63	27.5	17	33000	178
401744	LM.40 M12x80-TR	40	M12	107.5	80	27.5	17	33000	190
401746	LM.40 M12x100-TR	40	M12	127.5	100	27.5	17	33000	205
401747	LM.50 M8x50-TR	50	M8	79.5	50	29.5	15	14000	172
401748	LM.50 M8x63-TR	50	M8	92.5	63	29.5	15	14000	180
401749	LM.50 M8x80-TR	50	M8	109.5	80	29.5	15	14000	187
401750	LM.50 M10x50-TR	50	M10	79.5	50	29.5	15	23000	207
401751	LM.50 M10x63-TR	50	M10	92.5	63	29.5	15	23000	215
401752	LM.50 M10x80-TR	50	M10	109.5	80	29.5	15	23000	222
401753	LM.50 M12x63-TR	50	M12	92.5	63	29.5	17	33000	260
401754	LM.50 M12x80-TR	50	M12	109.5	80	29.5	17	33000	255
401756	LM.50 M12x100-TR	50	M12	129.5	100	29.5	17	33000	285
401758	LM.50 M16x63-TR	50	M16	92.5	63	29.5	17	40000	286
401759	LM.50 M16x80-TR	50	M16	109.5	80	29.5	17	40000	298
401757	LM.50 M16x100-TR	50	M16	129.5	100	29.5	17	40000	311
401787	LM.60 M10x50-TR	60	M10	87.5	50	37.5	17	23000	367
401788	LM.60 M10x63-TR	60	M10	100.5	63	37.5	17	23000	386
401789	LM.60 M10x80-TR	60	M10	117.5	80	37.5	17	23000	405
401760	LM.60 M12x63-TR	60	M12	100.5	63	37.5	17	33000	415
401761	LM.60 M12x80-TR	60	M12	117.5	80	37.5	17	33000	450
401762	LM.60 M12x100-TR	60	M12	137.5	100	37.5	17	33000	474
401763	LM.60 M16x80-TR	60	M16	117.5	80	37.5	24	62000	505
401765	LM.60 M16x100-TR	60	M16	137.5	100	37.5	24	62000	515
401766	LM.60 M16x125-TR	60	M16	162.5	125	37.5	24	62000	550
401771	LM.60 M20x98-TR	60	M20	135.5	98	37.5	24	95000	550
401773	LM.60 M20x138-TR	60	M20	175.5	138	37.5	24	95000	580
401776	LM.60 M20x158-TR	60	M20	195.5	158	37.5	24	95000	610
401781	LM.60 M24x98-TR	60	M24	135.5	98	37.5	24	95000	610
401783	LM.60 M24x138-TR	60	M24	175.5	138	37.5	24	95000	630
401786	LM.60 M24x158-TR	60	M24	195.5	158	37.5	24	95000	650