

- 1
- 2
- 3
- 4
- 5
- 6
- 7
- 8
- 9
- 10
- 11
- 12
- 13
- 14
- 15
- 16
- 17
- 18

**MATERIAL**

Glass-fibre reinforced polyamide based (PA) technopolymer, resistant to high temperatures, black colour, matte finish.

**MOUNTING**

Plain pass-through hole for shafts with diameter  $d \pm 0.2$  mm.

**MAXIMUM CONTINUOUS WORKING TEMPERATURE**

200°C.

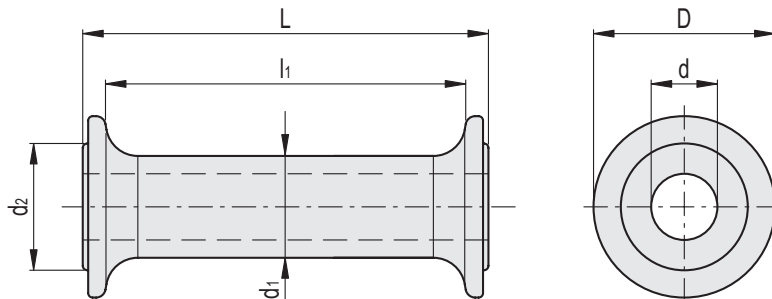
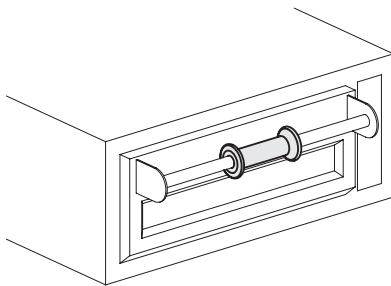
**ERGONOMY AND DESIGN**

The ergonomic profile and the wide flanges of the handle offer a comfortable and secure grip, protecting the hand laterally from direct contact with any high-temperature parts of the machine such as oven handles, etc.

The plain pass-through hole allows the handle to rotate and translate freely on the shaft.



Application example



Conversion Table	
1 mm = 0.039 inch	
D	
mm	inch
127.5	4.97

Code	Description	D	L	d	d1	d2	l1	⚖
26757	IGF.127-12	57	127.5	12	32	40	112	105
26759	IGF.127-16	57	127.5	16	32	40	112	104
26761	IGF.127-20	57	127.5	20	32	40	112	98