

**ASSEMBLY ENDS**

Glass-fibre reinforced polyamide based (PA) technopolymer, black colour.

**SUPPORT**

Aluminium in natural colour.

**GRADUATED CONTRAST SCREEN**

White lacquered aluminium. It can be taken out before assembly to allow the insertion of level lines or words.

**SCREWS, NUTS AND WASHERS**

AISI 316 stainless steel.

**PACKING RINGS**

FKM synthetic rubber O-Ring type VITON® for use with maximum continuous working temperature 266°F (130°C).

**TUBULAR WINDOW LEVEL**

Borosilicate glass transparent tube for use with oil, water or water/glycol-based solutions (50%), supplied with front protection

**TRANSPARENT FRONT PROTECTION**

Polycarbonate (PC). Removable for cleaning operations.

**FEATURES AND PERFORMANCES**

Maximum fluid level visibility even from side positions.

**TECHNICAL DATA**

In laboratory tests carried out for a relatively limited time with the following liquids at a temperature of 73.4°F (23°C): mineral oil type CB68 (according to ISO 3498) or water/glycol-based solutions ( 50%), the resistance values were much higher than 0.507 psi (35 bar).

**MAXIMUM CONTINUOUS WORKING TEMPERATURE:**

266°F (130°C) (with oil, water, glycol-based solutions).

In laboratory tests these indicators showed an excellent resistance to temperatures up to 302/320°F (150/160°C) for many hours with pressures of 72.5/87 psi (5/6 bar).

For use with other fluids and under different pressure and temperature conditions, please contact ELESA Technical Department.

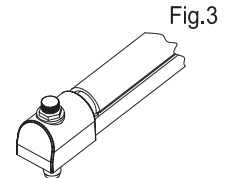
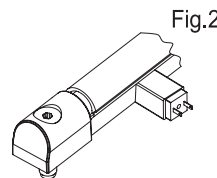
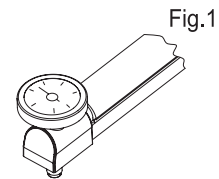
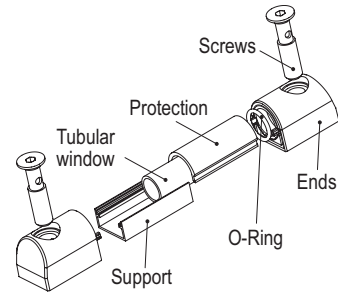
In any case we suggest to verify the suitability of the product under the actual working conditions.

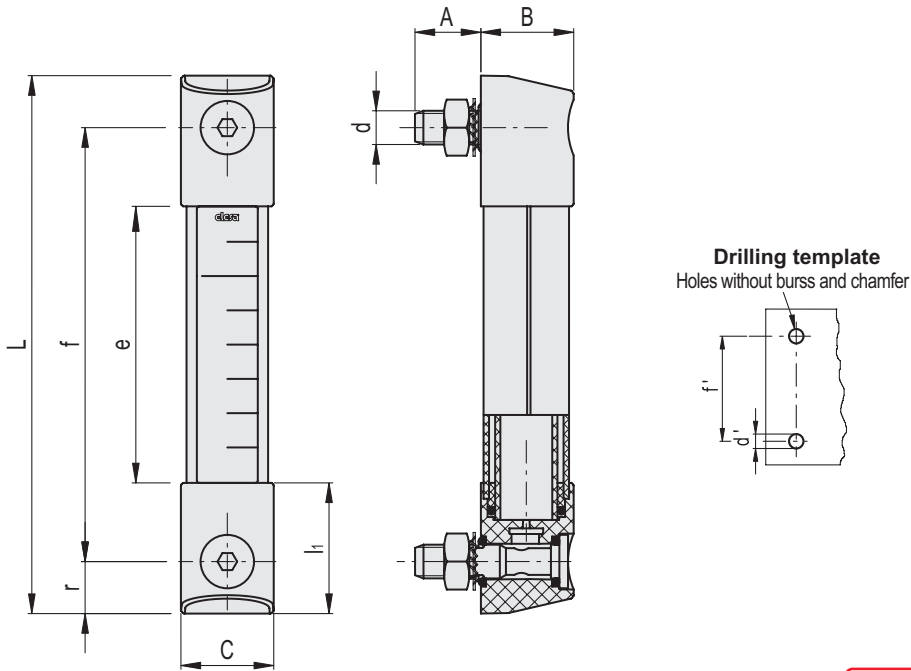
**SPECIAL EXECUTIONS ON REQUEST**

- Column level window in transparent methylacrylate (PMMA) for max 158°F (70°C) use.
- Polyamide based technopolymer float (from HCK.127) red colour.
- NBR float (from HCK.176) black colour with AISI 316 stainless steel spiral for special executions, viscous liquids, high temperatures.
- Indicators with level visibility (e) up to 56.9 inch (1444 mm) and fixing holes with hole centre distance (f) up to 59.1 inch (1500 mm).
- Packing rings in special material depending on the customer's needs.
- Built-in thermometer with red indication line (from HCK.127).
- External scale thermometer (Fig. 1) with probe in direct contact with the fluid.
- Special screw with nickel-plated brass tap (Fig. 3) to be fitted to the lower assembly end for any maintenance operation requiring the indicator exclusion.

**ACCESSORIES ON REQUEST (TO BE ORDERED SEPARATELY)**

SLCK kit for the electric control of a fluid level (Fig.2, from HCK.127) can be fitted, as needed, along the axis of the indicator with right (DX) or left (SX) connectors, normally closed (NC) or normally open (NO) contacts.





Code	Description	f	d <sub>2A</sub>	A	B	C	L	e	l1	r	d'	f	Tightening torque [ft-lb]	⚖
9111006	HCK.76-SST316-1/2-13-FKM-GL-P	2.99	1/2-13	0.79	1.30	1.30	4.45	1.65	1.40	0.73	0.49±0.008	2.99±0.02	8.85	0.37
9111016	HCK.127-SST316-1/2-13-FKM-GL-P	5	1/2-13	0.79	1.30	1.30	6.46	2.80	1.83	0.73	0.49±0.008	5±0.02	8.85	0.50
9111026	HCK.176-SST316-1/2-13-FKM-GL-P	6.93	1/2-13	0.79	1.30	1.30	8.39	4.72	1.83	0.73	0.49±0.008	6.93±0.02	8.85	0.58
9111036	HCK.254-SST316-1/2-13-FKM-GL-P	10	1/2-13	0.79	1.30	1.30	11.46	7.80	1.83	0.73	0.49±0.008	10±0.02	8.85	0.95
9111046	HCK.381-SST316-1/2-13-FKM-GL-P	15	1/2-13	0.79	1.30	1.30	16.46	12.80	1.83	0.73	0.49±0.008	15±0.02	8.85	1.42
9111056	HCK.508-SST316-1/2-13-FKM-GL-P	20	1/2-13	0.79	1.30	1.30	21.46	17.80	1.83	0.73	0.49±0.008	20±0.02	8.85	0.90

**INCH** **INOX** STAINLESS STEEL

