

# GN 433 | Wing knobs

Stainless steel

**INCH**



## MATERIAL

Cast AISI CF-8 stainless steel, sandblasted matte finish.

## FEATURES AND APPLICATIONS

These wing knobs allow high tightening torque values and a comfortable grip, thanks to the elongated hub.

# GN 434 | Wing knobs

Stainless steel

**INCH**

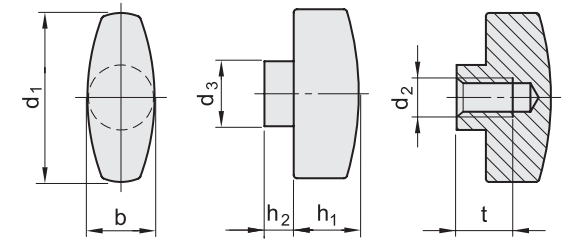
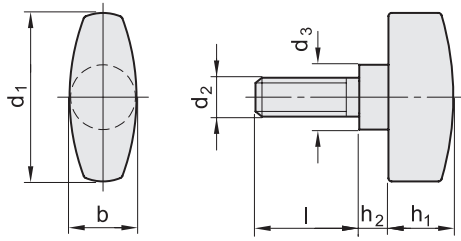
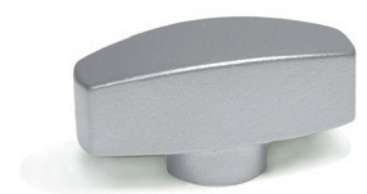
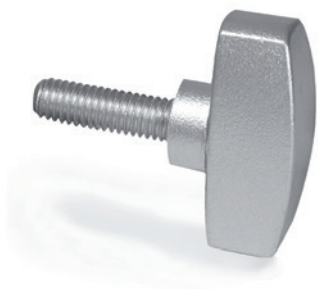


## MATERIAL

Cast AISI CF-8 stainless steel, sandblasted matte finish.

## FEATURES AND APPLICATIONS

These wing knobs allow high tightening torque values and a comfortable grip, thanks to the elongated hub.



**INOX STAINLESS STEEL INCH**

Code	Description	d1	d2	d3	b	h1	h2	l	$\Delta$
GN.929453	GN 433-26-10-32-039-MT	1.02	10-32	0.39	0.43	0.39	0.18	0.39	0.04
GN.929454	GN 433-26-10-32-063-MT	1.02	10-32	0.39	0.43	0.39	0.18	0.63	0.05
GN.929455	GN 433-26-1/4-20-063-MT	1.02	1/4-20	0.39	0.43	0.39	0.18	0.63	0.05
GN.929456	GN 433-26-1/4-20-079-MT	1.02	1/4-20	0.39	0.43	0.39	0.18	0.79	0.05
GN.929457	GN 433-26-1/4-20-098-MT	1.02	1/4-20	0.39	0.43	0.39	0.18	0.98	0.06
GN.929475	GN 433-34-1/4-20-079-MT	1.34	1/4-20	0.47	0.51	0.47	0.2	0.79	0.09
GN.929476	GN 433-34-1/4-20-098-MT	1.34	1/4-20	0.47	0.51	0.47	0.2	0.98	0.09
GN.929477	GN 433-34-1/4-20-118-MT	1.34	1/4-20	0.47	0.51	0.47	0.2	1.18	0.1
GN.929478	GN 433-34-5/16-18-063-MT	1.34	5/16	0.47	0.51	0.47	0.2	0.63	0.09
GN.929479	GN 433-34-5/16-18-079-MT	1.34	5/16	0.47	0.51	0.47	0.2	0.79	0.09
GN.929480	GN 433-34-5/16-18-118-MT	1.34	5/16	0.47	0.51	0.47	0.2	1.18	0.11

**INOX STAINLESS STEEL INCH**

Code	Description	d1	d2	d3	b	h1	h2	tmin	$\Delta$
GN.922141	GN 434-26-10-32-MT	1.02	10-32	0.39	0.43	0.39	0.18	0.31	0.04
GN.922142	GN 434-26-1/4-20-MT	1.02	1/4-20	0.39	0.43	0.39	0.18	0.31	0.04
GN.922143	GN 434-34-1/4-20-MT	1.34	1/4-20	0.47	0.51	0.47	0.2	0.39	0.07
GN.922144	GN 434-34-5/16-18-MT	1.34	5/16	0.47	0.51	0.47	0.2	0.39	0.07

Clamping knobs