

- 1
- 2
- 3
- 4
- 5
- 6
- 7
- 8
- 9
- 10
- 11
- 12
- 13
- 14
- 15
- 16
- 17
- 18
- 19

**GUIDE PROFILE**

Polyethylene based (HMWPE) technopolymer, natural colour.

**BRACKET**

AISI 304 stainless steel

**FEATURES AND APPLICATIONS**

The GLT side guide is used to laterally guide products with good stability (Fig.1) on the conveyor belts, without leaving traces on the containers.

Generally used in situations where you want to avoid tearing product labels.

High molecular weight polyethylene (HMWPE) has a high wear resistance; it is particularly suitable for high-speed movements due to its low coefficient of friction.

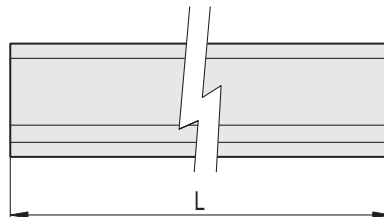
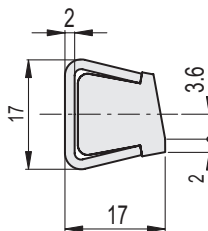
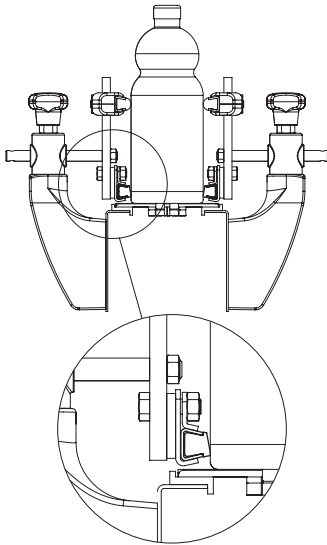
Supplied in bars of 1500 or 3000 mm length.

**ACCESSORIES ON REQUEST**

Guide rail clamps: MPG-T, MPG-2T, MPG-T-S.



Fig.1



Levelling feet and supports

Code	Description	L	⚖
419338	GLL-2-1500	1500	1038
419339	GLL-2-3000	3000	2076