

- 1
- 2
- 3
- 4
- 5
- 6
- 7
- 8
- 9
- 10
- 11
- 12
- 13
- 14
- 15
- 16
- 17
- 18
- 19

MATERIAL

Acetal-based technopolymer (POM), orange.

FEATURES

Recommended for equipping a lubrication system with a threaded fitting both at the inlet and outlet of the modular tube.

Fitting to be implemented by means of snap coupling (Fig.1) with modular tubes FHT (see page -).

See Flexible coolant hoses (on page -).

CHEMICAL COMPATIBILITY

Material resistant to detergents, lubricants and oils, avoid contact with strong acids and bases.

To use fluids other than those listed, contact Elesà's technical department. In any case we suggest to verify the suitability of the product under the actual working conditions.

SPECIAL EXECUTION ON REQUEST

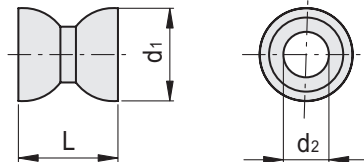
Sockets made from raw materials suitable for contact with food (FDA CFR.21 and EU 10/2011).

ACCESSORIES ON REQUEST

Pliers to assemble the components.



Fig.1



Conversion Table	
1 mm = 0,039 inch	
L	
mm	inch
20	0.79
28.5	1.12

METRIC

Code	Description	L	d1	d2	For coolant hoses	△△
471171	FHS.1/4	20	16	7	1/4	2
471176	FHS.1/2	28.5	26	13	1/2	4