

- 1
- 2
- 3
- 4
- 5
- 6
- 7
- 8
- 9
- 10
- 11
- 12
- 13
- 14
- 15
- 16
- 17
- 18

**MATERIAL**

Acetal-based technopolymer (POM), orange.

**FEATURES**

Recommended for equipping a system for the lubrication of two different flows at the outlet, keeping only one at the inlet.

Fitting to be implemented by means of snap coupling (Fig.1) with modular tubes FHT (see page -).

See Flexible coolant hoses (on page -).

**CHEMICAL COMPATIBILITY**

Material resistant to detergents, lubricants and oils, avoid contact with strong acids and bases.

To use fluids other than those listed, contact Elesà's technical department. In any case we suggest to verify the suitability of the product under the actual working conditions.

**SPECIAL EXECUTION ON REQUEST**

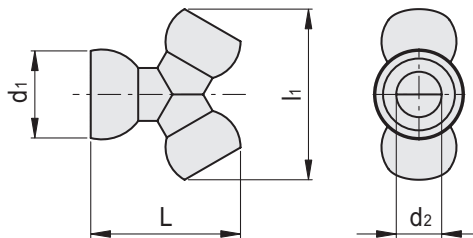
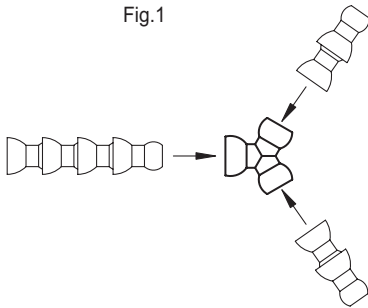
Y fittings made from raw materials suitable for contact with food (FDA CFR.21 and EU 10/2011).

**ACCESSORIES ON REQUEST**

Pliers to assemble the components.



Fig.1



Conversion Table	
1 mm = 0,039 inch	
L	
mm	inch
32.5	1.28
43.5	1.71

**METRIC**

Code	Description	L	d1	d2	l1	For coolant hoses	
471031	FHF.1/4	32.5	16	7	33	1/4	4
471036	FHF.1/2	43.5	26	14	49.5	1/2	10